



*UNDERGROUND & OVERHEAD CONSTRUCTION • HORIZONTAL DIRECTIONAL DRILLING • LINE MAINTENANCE*

# ***TOOLS & EQUIPMENT***

## **CATALOG**

# **WIRE PULLING**





# THE RIGHT PRODUCTS, THE RIGHT SERVICE

## The Biggest Range of Wire Pulling Accessories and Drilling Fluid Additives

Are you planning a building project and looking for the most amazing prices on tools and accessories? Build It Right, Inc. is your one stop shop that provides the biggest range of products for drilling, cabling, and wire pulling in the U.S. Offering the highest quality products backed by our years of knowledge and expertise in the industry, you can easily build with confidence and convenience with everything you need at your fingertips.

## Offering the Right Accessories at the Right Price for Any Building Project

Build It Right, Inc. was founded on the needs of our customers to find the most useful and appropriate building products and accessories at the most amazing prices. Our focus is on the customer experience, which is why we deliver exceptional customer service through the most knowledgeable advice and high quality products. Whether you need wire pulling tools, Cetco drilling fluids, drilling polymer products and more, our team is here to help you find exactly what you need at the lowest price.

## Are You Looking for Directional Drilling Tools or Horizontal Directional Drilling Parts?

At Build It Right, we stock the most popular brands that deliver quality no matter what you need to build. Have your Cetco and Bentonite drilling fluids shipped right to your door so that you can build with confidence. You can also order your Cetco and Bentonite drilling fluids by the pallet! Install ducts with efficiency with duct installation range of products, or work quickly when installing cables with our easy to use cable roller range that delivers affordability and speed no matter how large your project is.

## Shop for Cable Puller Products and Accessories Today!

Rather than blowing your building project budget, shop for the most affordable high quality products and accessories with Build It Right, Inc. Offering nationwide shipping and the most competitive prices in the industry, our goal is to ensure that your project is a success. The right products. The right service. Shop Online today or call our team at 1-888-206-3044 to find out more.





## **Wire Pulling**

### **Line Swivels**

**pg. 4**

### **Ball Bearing Swivels**

**pg. 6**

### **Rope Swivels**

**pg.10**

### **Break-Away Swivels**

**pg. 12**

### **Pulling Eye Systems**

**pg. 16**

### **Pulling Grips**

**pg. 26**

### **Pulling Accessories**

**pg. 50**

### **Wire Pulling Grips**

**pg. 52**

### **Web Strap Hoists**

**pg. 58**

## LINE SWIVELS

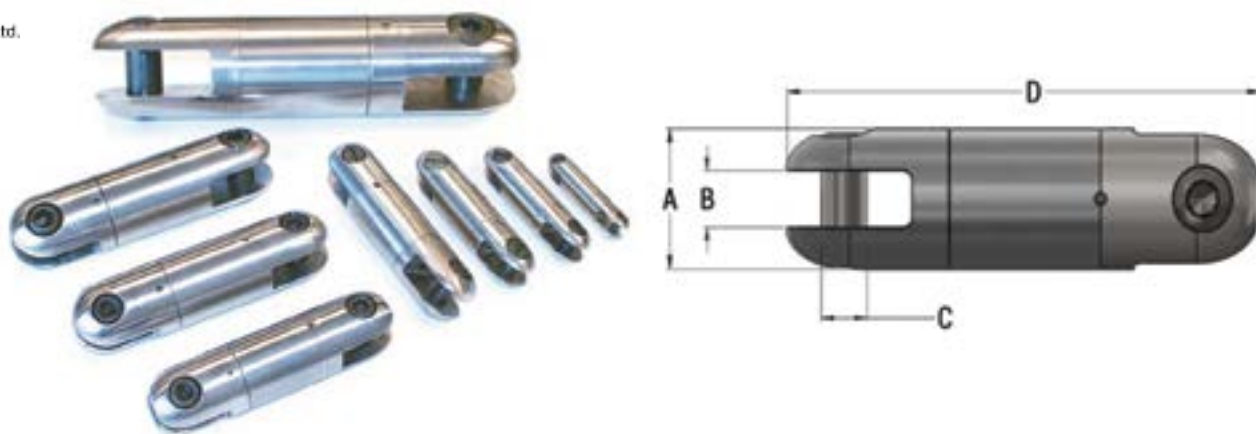
### SERIES 00505/00505A

DCD Line Swivels are typically constructed with a thrust bearing for tensile load and a radial bearing for bending load. They combine a high safe working load with a compact design. All sizes incorporate an oil seal and are manufactured from high strength stainless steel. DCD Locking Line Swivels are typically constructed with a bronze thrust bearing for tensile load and a radial bearing for bending load. The bronze bearing will rotate up to a portion of the safe working load before locking. Once past this point, rotation will only occur when pulling tension is relieved.

Sizes 00505-020 and larger are supplied with a grease point for lubrication. This is particularly useful in overhead applications where high speed rotation is possible. All sizes of both types are pull tested to verify the 3:1 safety factor. Sizes 00505-025 and larger are supplied with hexagon clevis pins. Smaller sizes have slotted clevis pins. Under no circumstances should alternate clevis pins be used.

Permanent peen marking is now standard on all line swivels and material traceability for all batches produced.

**Note:** Line Swivels are not designed to run around bull wheels and severe damage or injury may be incurred if this is done.

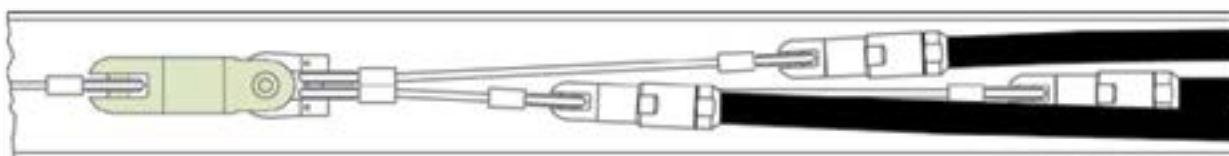


Part No.	Locking Part No. (Compression)	3:1 Safe Working Load	5:1 Safe Working Load	A	B	C	D	Weight (lb)	Replacement Clevis Pins
00505-005	-	750 lb	450 lb	5/8"	9/32"	3/16"	2-1/2"	0.12 lb	00005-SLT
*00505-008	-	1,124 lb	674 lb	25/32"	9/32"	3/16"	3-3/16"	0.19 lb	00005-SLT
00505-010	00505-010A	2,250 lb	1,350 lb	7/8"	3/8"	5/16"	3-3/8"	0.32 lb	00010-SLT
00505-015	00505-015A	3,500 lb	2,100 lb	1"	13/32"	3/8"	3-7/8"	0.51 lb	00015-SLT
00505-020	00505-020A	5,000 lb	3,000 lb	1-1/4"	17/32"	13/32"	4-3/4"	1.0 lb	00020-SLT
00505-025	00505-025A	7,000 lb	4,200 lb	1-3/8"	9/16"	1/2"	5-1/8"	1.4 lb	00025-HEX
00505-027	00505-027A	9,000 lb	5,400 lb	1-1/2"	19/32"	1/2"	5-5/8"	1.8 lb	00025-HEX
00505-030	00505-030A	10,000 lb	6,000 lb	1-5/8"	11/16"	5/8"	6"	2.1 lb	00030-HEX
00505-035	00505-035A	15,000 lb	9,000 lb	2"	25/32"	11/16"	7"	3.9 lb	00035-HEX
00505-040	-	25,000 lb	15,000 lb	2-3/8"	1-1/32"	7/8"	10-5/16"	8.2 lb	00040-HEX
**00505-041	-	30,000 lb	18,000 lb	2-3/8"	1-1/32"	7/8"	10-5/16"	8.3	00040-HEX
**00505-045	-	50,000 lb	30,000 lb	3"	1-3/16"	1-1/8"	13-3/4"	18 lb	00045-HEX
**00505-050	-	62,000 lb	37,500 lb	3-3/4"	1-1/2"	1-1/4"	15-9/16"	34 lb	00050-HEX

\*This has a metric 3:1 Safe Working Load of 5 kN. Contact Customer Service for the other metric equivalents

\*\*These swivels are made from alloy steel with black oxide finish; all others are stainless steel.

Note: Marine grade versions are available; made to order.

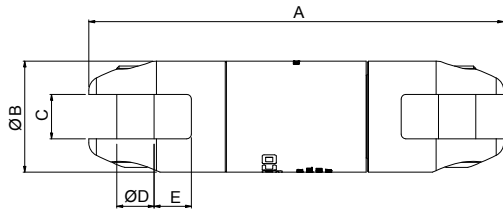




## LINE PULLING SWIVEL - BRIGHT ZINC PLATED STEEL



Swivels designed for use in stringing high tension wires for electrical transmission and distribution. Swivels are important in pulling when the lines develop torsion during installation. Swivels will release torque and prevent it from reaching dangerous levels, which can cause damage to the cable. All swivels are stringently quality tested and inspected to ensure optimum performance and reliability.



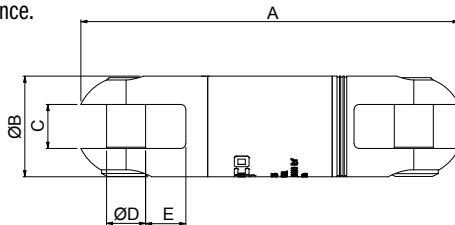
Slingco Part No.	Safe Working Load (lb)		A		B		C		D		E	
	Underground	Overhead	(in)	(mm)	(in)	(mm)	(in)	(mm)	(in)	(mm)	(in)	(mm)
ZSW2091	2,250	1,350	3-3/8"	610	7.8"	22	3/8"	10	7/8"	22	5/16"	8
ZSW2092	3,500	2,100	4"	955	1"	25	7/16"	11	11/16"	26	3/8"	10
ZSW2093	5,000	3,000	4-15/16"	1,345	1-1/4"	32	9/16"	14	1-1/4"	32	3/8"	10
ZSW2094	7,000	4,200	5-3/16"	1,900	4-15/16"	35	9/16"	14	1-13/32"	36	1-13/32"	12.5
ZSW2096	10,000	6,000	6-3/16"	2,700	6-3/16"	41	45/64"	18	1-3/4"	45	1-3/4"	16.5
ZSW2097	15,000	9,000	7-5/16"	4,030	7-5/16"	53	25/32"	20	2-1/8"	54	2-1/8"	18

3:1 Factor of Safety used, based on the ultimate load for underground use, 5:1 Factor of Safety used, based on the ultimate load for overhead use

## LINE PULLING SWIVEL - GALVANIZED



Slingco Line Swivels are designed to the highest specifications for underground and overhead pulling applications. All swivels are stringently quality tested and inspected to ensure optimum reliability and performance.



Slingco Part No.	Safe Working Load (lb)		A		B		C		D		E	
	Underground	Overhead	(in)	(mm)	(in)	(mm)	(in)	(mm)	(in)	(mm)	(in)	(mm)
ZSW2649	4,000	2,400	4-1/2"	121	1-1/4"	32	19/32"	15	1-3/16"	30	3/8"	10
ZSW2929	8,000	4,800	5-3/8"	136	1-1/2"	38	5/8"	16	1-3/8"	35	7/16"	11
ZSW6122	10,000	6,000	7"	178	1-7/8"	48	3/4"	19	1-3/4"	44	5/8"	16
ZSW6123	16,000	9,600	10-5/32"	258	2-7/16"	62	1"	48	2-11/16"	68	7/8"	22
ZSW2857	30,000	18,000	11-1/8"	283	2-1/2"	63	1"	25	2-3/4"	70	7/8"	22

3:1 Factor of Safety used, based on the ultimate load for underground use

5:1 Factor of Safety used, based on the ultimate load for overhead use

Swivel or Connector Part No.	ZSW2091	ZSW2092	ZSW2093	ZSW2094	ZSW2096 ZSW6122	ZSW2097	ZSW2929	ZSW2649	ZSW2857	ZSW6123	ZSW6554	ZSW6555	ZSW6556	ZSW6557 ZSW6558 ZSW6559 ZSW6560
------------------------------	---------	---------	---------	---------	--------------------	---------	---------	---------	---------	---------	---------	---------	---------	--

Replacement Pin Hex	SWI2858	SWI2810	SWI2340	SWI2341	SWI2343	SWI2344	SWI2801	SWI2648	SWI2748	SWI5184	SWI2859	SWI2339	SWI5309	SWI5310
---------------------	---------	---------	---------	---------	---------	---------	---------	---------	---------	---------	---------	---------	---------	---------

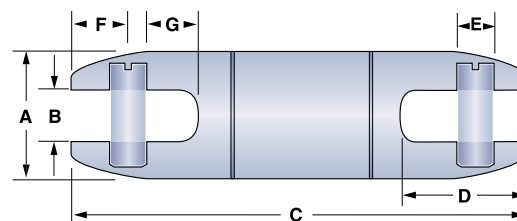
**SAFETY NOTE:** All Slingco Line Pulling Swivels are designed for straight line pulling and will not support side loads as would be encountered traveling over a bull wheel. Swivel selection should be based on pulling line diameter, grip size, opening dimensions, pin sizes, working load, and sheave groove diameter. Swivels are not designed for general lifting.

## 808 CHAMPION SWIVELS

Designed specifically for underground and overhead cable pulling applications. Can handle all types of utility cables. Precision machined from high-strength stainless steel. Clevis pin is easily replaceable (see ordering information below).

**CAUTION:** 808 Champion Swivels are to be used for cable stringing or pulling only. *808 Champion Swivels are not to be used for Directional Drilling.*

**NOTE:** Swivels are not designed to run around bullwheels. Always verify that the swivel size is sized to the pulling harness or grip prior to ordering.



Part No.	Working Load		A	B	C	D	E	F	G					
	*Underground	**Aerial												
	(lb)	(N)	(in)	(mm)	(in)	(mm)	(in)	(mm)	(in)	(mm)				
08017000	600	2,669	5/8"	16	3.56"	90	.80"	20	.16"	4	.37"	9	.34"	9
08016000	2,500	11,120	7/8"	22	4.41"	112	1.03"	26	.31"	8	.53"	13	.35"	9
**08016000H	2,500	11,120	7/8"	22	4.41"	112	1.03"	26	.31"	8	.53"	13	.35"	9
08080912	5,000	22,241	1-1/4"	32	5.44"	128	1.34"	34	.37"	9	.59"	15	.57"	14
**08080912H	5,000	22,241	1-1/4"	32	5.44"	128	1.34"	34	.37"	9	.59"	15	.57"	14
08080913	7,000	31,137	1-3/8"	35	5.25"	133	1.31"	33	.43"	11	.56"	14	.54"	14
**08080913H	7,000	31,137	1-3/8"	35	5.25"	133	1.31"	33	.43"	11	.56"	14	.54"	14
08080916	10,000	44,482	1-5/8"	41	6.51"	165	1.59"	40	.56"	14	.78"	20	.54"	14
**08080916H	10,000	44,482	1-5/8"	41	6.51"	165	1.59"	40	.56"	14	.78"	20	.54"	14
08080920	15,000	66,723	2"	51	6.99"	178	1.78"	45	.62"	16	.72"	18	.75"	19
**08080929H	15,000	66,723	2"	51	6.99"	178	1.78"	45	.62"	16	.72"	18	.75"	19
08080925	25,000	111,205	2-1/2"	64	10.20"	259	2.80"	71	.87"	22	1.23"	31	1.13"	29
**08080925H	25,000	111,205	2-1/2"	64	10.20"	259	2.80"	71	.87"	22	1.23"	31	1.13"	29
08080930	30,000	133,446	3"	76	12.04"	306	3.56"	90	1.12"	28	1.38"	35	1.60"	41

\*3:1 Safety Factor

\*\*5:1 Safety Factor

## REPLACEMENT CLEVIS PINS

Part No.	Replacement Part No., Slotted	Part No.	Replacement Part No., Hex
08017000	08017016		
08016000	08955408	08016000H	08081065
08080912	08081046	08080912H	08081042
08080913	08081036	08080913H	21000371
08080916	08081026	08080916H	21000381
08080920	08081016	08080929H	21000391
08080925	08081006	08080925H	21000401
08080930	08081053		

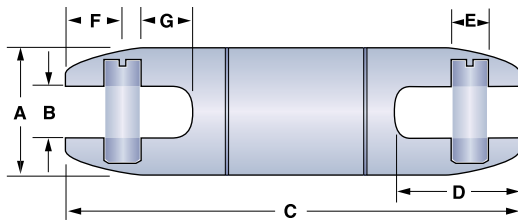


## 821 CHAMPION SWIVELS

Designed to meet common dimensional specifications, the 821 Champion Swivels are designed for underground and overhead cable pulling applications and can handle all types of utility cable. Precision machined stainless steel. Clevis pin is easily replaceable (see ordering information below).

**CAUTION:** 821 Champion Swivels are to be used for cable stringing or pulling only.

**NOTE:** Swivels are not designed to run around bullwheels. Always verify that the swivel size is sized to the pulling harness or grip prior to ordering.



### Working Load

Part No.	*Underground		**Aerial		A		B		C		D		E		F		G	
	(lb)	(N)	(lb)	(N)	(in)	(mm)	(in)	(mm)	(in)	(mm)	(in)	(mm)	(in)	(mm)	(in)	(mm)	(in)	(mm)
08210007	1,800	8,006	1,080	4,804	7/8"	22	.31"	8	3.09"	78	.84"	21	.31"	8	.38"	10	0.305"	8
08210012	4,000	17,992	2,400	10,675	1-1/4"	32	.59"	15	4.52"	115	1.22"	31	.38"	10	.44"	11	0.410"	10
08210014	7,500	33,360	4,500	20,016	1-7/16"	37	.59"	15	5.13"	130	1.41"	36	.44"	11	.59"	15	0.600"	15
08210018	10,000	44,480	6,000	26,689	1-7/8"	48	.75"	19	7.06"	179	1.88"	48	.63"	16	.81"	21	0.755"	19

\*3:1 Safety Factor

\*\*5:1 Safety Factor



# CONDUX

## REPLACEMENT CLEVIS PINS

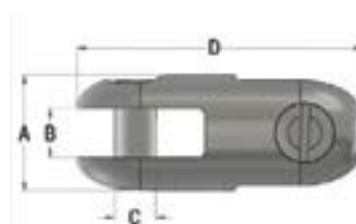
Part No.	Replacement Part No.
08210007	08210105
08210012	08210115
08210014	08210125
08210018	08210135

## CAN-LINK™ CONNECTOR

### SERIES 00520

**DCD** Design & Manufacturing Ltd.

The Can-Link™ Connector is used to connect two items with lugs or wire loop fittings. A common use is to connect a wire mesh grip to the pulling wire. The connectors are manufactured from high strength stainless steel with hardened clevis pins. The two smaller sizes have slotted clevis pins, while the larger sizes have hexagon clevis pins, all of which are available as spares.



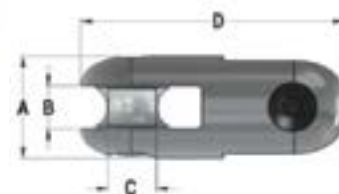
Part No.	3:1 Safe Working Load	A	B	C	D	Weight (lb)
00520-010	2,500 lb	7/8"	3/8"	5/16"	2-1/8"	0.17 lb
00520-020	5,000 lb	1-1/4"	17/32"	13/32"	2-7/8"	0.46 lb
00520-027	9,000 lb	1-1/2"	19/32"	1/2"	3-3/8"	0.73 lb
00520-035	15,000 lb	2"	25/32"	11/16"	4-9/16"	2.0 lb
00520-040	25,000 lb	7/8"	2-13/32"	1"	6-7/32"	4.0 lb

## ROPE-TO-ROPE CONNECTOR

### SERIES 00521

**DCD** Design & Manufacturing Ltd.

This product is used to connect two ropes of up to 7/8" dia. The entire product, including sheaves, is manufactured from stainless steel. Replacement sheaves are available by contacting the customer service department. The sheaves run on standard DCD clevis pins, which are also available as spares.



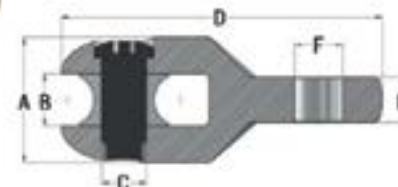
Part No.	3:1 Safe Working Load	Maximum Rope Dia.	A	B	C	D	Weight
00521-035	15,000 lb	7/8"	2"	15/16"	11/16"	5-1/2"	2.7 lb
00521-040	25,000 lb	7/8"	2-13/32"	1"	7/8"	6-7/32"	4.5 lb

## ROPE-TO-SWIVEL CONNECTOR

### SERIES 00522

**DCD** Design & Manufacturing Ltd.

This product is used to connect a swivel to pulling rope. The entire product, including sheave, is manufactured from stainless steel. Replacement sheaves are available by contacting Customer Service. The sheaves run on standard DCD clevis pins, which are also available as spares.



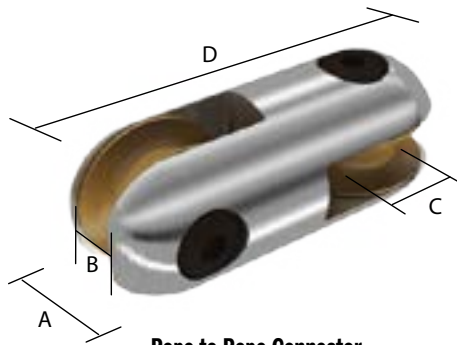
Part No.	3:1 Safe Working Load	Maximum Rope Dia.	A	B	C	D	E	F	Weight	Fits Line Swivel
00522-025	7,000 lb	7/8"	2"	15/16"	11/16"	5-5/16"	1/2"	17/32"	2.1 lb	00505-020 00505-025 00505-027
00522-025A	7,000 lb	7/8"	Same as above without sheave						1.8 lb	
00522-035	15,000 lb	7/8"	2"	15/16"	11/16"	5-3/8"	21/32"	3/4"	2.3 lb	00505-030 00505-035
00522-035A	15,000 lb	7/8"	Same as above without sheave						2.0 lb	
00522-040	30,000 lb	7/8"	2"	15/16"	11/16"	5-3/8"	21/32"	3/4"	3.9 lb	
00522-040A	30,000 lb	7/8"	Same as above without sheave						3.6 lb	00505-040



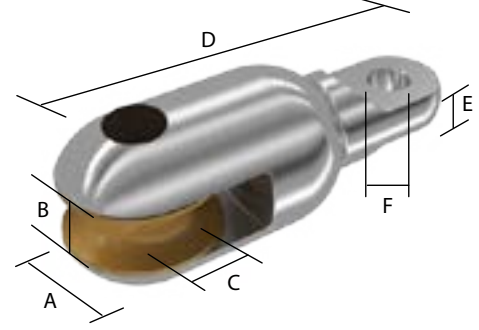
## CONNECTORS: 90°, ROPE TO ROPE, ROPE TO SWIVEL



90° Connector



Rope to Rope Connector



Rope to Swivel Connector

Use to connect rope, swivels and other objects. With high strength pins and smooth rollers you can safely connect rope without fear of fraying or damage Use the convenient 90° connectors to link wire and other non rope items. Connectors have high strength hex pins. The Rope to Rope connector has tow rollers to protect rope from becoming frayed.

### 90° Connector

Slingco Part No.	Safe Working Load		A		B		C		D		Weight
	(lb)	(in)	(mm)	(in)	(mm)	(in)	(mm)	(in)	(mm)		
ZSW6554	2,500	7/8"	22	3/8"	9.6	5/16"	8	2-1/8"	54.0	0.17 lb	
ZXW6555	5,000	1-1/4"	31.8	17/32"	13.5	13/32"	10	2-7/8"	73	0.46 lb	
ZSW6556	9,000	1-1/2"	38.1	19/32"	15	1/2"	12.5	3-3/8"	86	0.73 lb	
ZSW6557	15,000	2"	50.9	25/32"	20	11/16"	18.0	4-9/16"	116	2.00 lb	

### Rope to Rope Connector

Slingco Part No.	Safe Working Load (lb)	Max Rope Dia.		A		B		C		D		Weight
		(in)	(mm)	(in)	(mm)	(in)	(mm)	(in)	(mm)			
ZSW6558	15,000	7/8"	22.2	2"	50.8	15/16"	24	11/16"	18	5-1/2"	140	2.70 lb

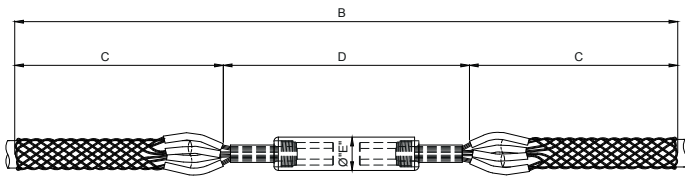
### Rope to Swivel Connector

Slingco Part No.	Safe Working Load (lb)	Max Rope Dia.		A		B		C		D		E		F		Weight
		(in)	(mm)	(in)	(mm)	(in)	(mm)	(in)	(mm)	(in)	(mm)	(in)	(mm)			
ZSW6559	7,000	7/8"	22.2	2"	50.8	15/16"	24	11/16"	18	5-5/16"	135	1/2"	12.7	17/32"	13.5	2.70 lb
ZXW6560	15,000	7/8"	22.2	2"	50.8	15/16"	24	11/16"	18	5-3/8"	137	21/32"	16.7	3/4"	18	2.00 lb

## SPLICING GRIP - ROTATING BARREL



Slingco Rotating Barrel Swivel Grips have a high capacity swivel that travels smoothly when being strung in straight line pulling.



Slingco Part No.	Range		B		C		D		Approximate Breaking Load (lb)
	(in)	(mm)	(in)	(mm)	(in)	(mm)	(in)	(mm)	
ZCS3505	0.25-0.50	6-13	66.1"	1,680	29.7"	755	6.7"	170	4,400
ZCS3506	0.50-1.00	13-25	87.8"	2,230	40.0"	1,015	7.9"	200	7,400
ZCS3507	1.00-1.50	25-38	79.9"	2,030	35.2"	895	9.5"	240	10,000
ZCS3508	1.50-2.00	38-51	72.0"	1,830	31.3"	795	9.5"	240	12,000
ZCS3509	2.00-2.75	51-70	85.8"	2,180	37.0"	940	11.8"	300	16,000
ZCS3510	2.75-3.50	70-90	107.5"	2,730	47.0"	1,195	13.3"	340	20,000
ZCS3511	3.50-4.25	89-108	104.3"	2,650	44.5"	1,130	15.3"	390	24,000

## ROPE TO SWIVEL CLEVIS

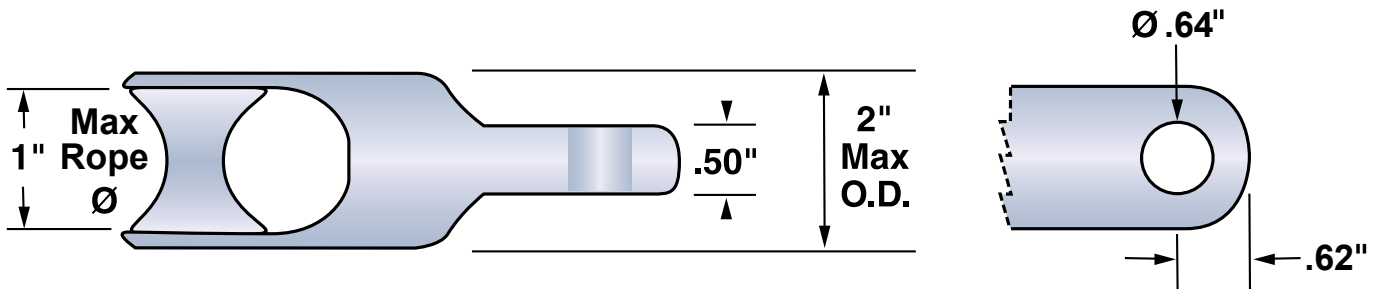


Used to connect the swivel to rope up to 1" (25 mm) in diameter. To be used with 1-1/4"(32 mm), 1-3/8" (35 mm), 1-5/8" (41 mm) & 2" (51 mm) 808 Champion Swivels. Precision machined stainless steel.

Part No.	Size		Max O.D.		Load Rating	
	(in)	(mm)	(in)	(mm)	(lb)	(N)
08091230	1-1/4"-2"	32-51	2"	51	10,000	44,460

### Replacement Pin and Roller:

Part No.	Description
08091221	Roller
08091222	Pin



## ROPE TO ROPE/ GRIP CLEVIS



Versatile clevis provides efficient link for several applications. Stainless steel construction. Combinations of sheaves and pins allow the following connections:

- 7/8" (22mm) diameter rope to 7/8" (22mm) diameter rope
- Rope to forged eye pulling grip
- Forged eye pulling grip to forged eye pulling grip
- Rope to flexible eye pulling grip

Part No.	Max O.D.	
	(in)	(mm)
08091230	1-3/4"	44

### Replacement Pin and Roller:

Part No.	Description
08091221	Roller
08091201	Pin





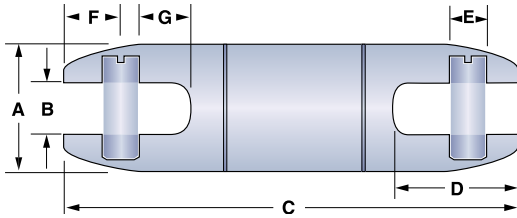
## Swivel Compatibility Chart

Swivel Part Number	Swivel Size		Pulling Eye Size Range			Pulling Harness	
	(in)	(mm)	Standard Head Reusable Power Pulling Eyes Cable Size	Fixed Head Innerduct Pulling Eyes Part No.	Eye to Eye Connector Size Part No.	Separate Leg Ends	Large Front Link Size Part No.
08017000	5/8"	16	-	-	-	1/8", 1/4"	-
08016000	7/8"	22	1/0-4/0 AWG	-	-	1/8", 1/4"	-
08080912	1-1/4"	32	All	08914110, 08914120 08914130, 08912140	(3/8") 08050300 (1/2") 08050500	All	(1/8"-08549200) (1/4"-08549230, 08549325, 08569910, 08549326) (1/2"-08549331)
08080913	1-3/8"	35	All	08914110, 08914120 08914130, 08912140	3/8") 08050300	All	(1/8"-08549200) (1/4"-08549230, 08549325, 08569910, 08549326) (1/2"-08549331)
08080916	1-5/8"	41	250-2500 kcmil	-	(3/8") 08050300 (1/2") 08050500	All	(1/8"-08549200) (1/4"-08549230, 08549325, 08569910, 08549326) (1/2"-08549331)
08080920	2"	51	250-2500 kcmil	-	All	All	(1/8"-08549200) (1/4"-08549230, 08549325, 08569910, 08549326) (1/2"-08549331)
08080925	2-1/2"	64	-	-	(1/2") 08050500 (5/8") 08050501	All Cables	All
08080930	3"	76	-	-	(1/2") 08050500 (5/8") 08050501	All Cables	All
08210007	7/8"	22	-	-	-	1/8", 1/4"	-
08210012	1-1/4"	32	All	All	(3/8") 08050300 (1/2") 08050500	All	(1/8"-08549200) (1/4"-085492320, 08549325, 08569910, 08549326) (1/2"-08549331)
08210014	1-7/16"	37	All	08914110, 08914120 08914130, 08914140 08914150, 08914169	(3/8") 08050300 (1/2") 08050500	All	(1/8"-08549200) (1/4"-085492320, 08549325, 08569910, 08549326) (1/2"-08549331)
08210018	1-7/8"	48	250-2500 kcmil	-	All	All	(1/8"-08549200) (1/4"-085492320, 08549325, 08569910, 08549326) (3/8"-08549333, 085493290) (1/2"-08549331)

# BREAK-AWAY SWIVELS

Essential for fiber optic and coaxial cable pulling, these swivels have a break load ranging from 150–1,800 pounds (667–8,006 N) and are designed to separate at ±5% of their rated break load. If the load rating is exceeded, the interior break pin fractures, the swivel separates, and the cable remains undamaged. Break pin is easily replaceable.

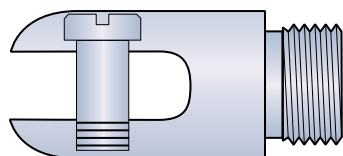
## BREAK-AWAY SWIVELS



### Dimensions

5/8" Swivel Part No.	Break Load		Dimensions													
	(lb)	(N)	A (in)	A (mm)	B (in)	B (mm)	C (in)	C (mm)	D (in)	D (mm)	E (in)	E (mm)	F (in)	F (mm)	G (in)	G (mm)
08017300	200	890	5/8"	16	.28"	7	3.56"	90	.80"	20	.16"	4	.37"	9	.34"	9
08017400	250	1,112	5/8"	16	.28"	7	3.56"	90	.80"	20	.16"	4	.37"	9	.34"	9
08016900	450	2,002	5/8"	16	.28"	7	3.56"	90	.80"	20	.16"	4	.37"	9	.34"	9
08017200	600	2,669	5/8"	16	.28"	7	3.56"	90	.80"	20	.16"	4	.37"	9	.34"	9
08017500	650	2,891	5/8"	16	.28"	7	3.56"	90	.80"	20	.16"	4	.37"	9	.34"	9
08017900	750	3,336	5/8"	16	.28"	7	3.56"	90	.80"	20	.16"	4	.37"	9	.34"	9
7/8" Swivel Part No.	Break Load		Dimensions													
	(lb)	(N)	A (in)	A (mm)	B (in)	B (mm)	C (in)	C (mm)	D (in)	D (mm)	E (in)	E (mm)	F (in)	F (mm)	G (in)	G (mm)
08018100	150	667	7/8"	22	.38"	10	4.41"	112	1.03"	26	.31"	8	.53"	13	.35"	9
08018300	200	890	7/8"	22	.38"	10	4.41"	112	1.03"	26	.31"	8	.53"	13	.35"	9
08018000	250	1,112	7/8"	22	.38"	10	4.41"	112	1.03"	26	.31"	8	.53"	13	.35"	9
08017600	300	1,334	7/8"	22	.38"	10	4.41"	112	1.03"	26	.31"	8	.53"	13	.35"	9
08018400	350	1,557	7/8"	22	.38"	10	4.41"	112	1.03"	26	.31"	8	.53"	13	.35"	9
08075300	400	1,779	7/8"	22	.38"	10	4.41"	112	1.03"	26	.31"	8	.53"	13	.35"	9
08015800	450	2,002	7/8"	22	.38"	10	4.41"	112	1.03"	26	.31"	8	.53"	13	.35"	9
08076500	500	2,224	7/8"	22	.38"	10	4.41"	112	1.03"	26	.31"	8	.53"	13	.35"	9
08018500	550	2,446	7/8"	22	.38"	10	4.41"	112	1.03"	26	.31"	8	.53"	13	.35"	9
08015000	600	2,669	7/8"	22	.38"	10	4.41"	112	1.03"	26	.31"	8	.53"	13	.35"	9
08018600	650	2,891	7/8"	22	.38"	10	4.41"	112	1.03"	26	.31"	8	.53"	13	.35"	9
08076000	700	3,114	7/8"	22	.38"	10	4.41"	112	1.03"	26	.31"	8	.53"	13	.35"	9
08075500	750	3,336	7/8"	22	.38"	10	4.41"	112	1.03"	26	.31"	8	.53"	13	.35"	9
08018700	800	3,558	7/8"	22	.38"	10	4.41"	112	1.03"	26	.31"	8	.53"	13	.35"	9
08018800	850	3,781	7/8"	22	.38"	10	4.41"	112	1.03"	26	.31"	8	.53"	13	.35"	9
08076600	900	4,003	7/8"	22	.38"	10	4.41"	112	1.03"	26	.31"	8	.53"	13	.35"	9
08015700	1,000	4,448	7/8"	22	.38"	10	4.41"	112	1.03"	26	.31"	8	.53"	13	.35"	9
08018900	1,100	4,893	7/8"	22	.38"	10	4.41"	112	1.03"	26	.31"	8	.53"	13	.35"	9
08015200	1,200	5,338	7/8"	22	.38"	10	4.41"	112	1.03"	26	.31"	8	.53"	13	.35"	9
08019100	1,300	5,782	7/8"	22	.38"	10	4.41"	112	1.03"	26	.31"	8	.53"	13	.35"	9
08074600	1,400	6,227	7/8"	22	.38"	10	4.41"	112	1.03"	26	.31"	8	.53"	13	.35"	9
08076900	1,500	6,672	7/8"	22	.38"	10	4.41"	112	1.03"	26	.31"	8	.53"	13	.35"	9
08019200	1,600	7,117	7/8"	22	.38"	10	4.41"	112	1.03"	26	.31"	8	.53"	13	.35"	9
08019300	1,700	7,562	7/8"	22	.38"	10	4.41"	112	1.03"	26	.31"	8	.53"	13	.35"	9
08017700	1,800	8,006	7/8"	22	.38"	10	4.41"	112	1.03"	26	.31"	8	.53"	13	.35"	9

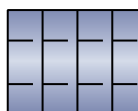
## REPLACEMENT PINS



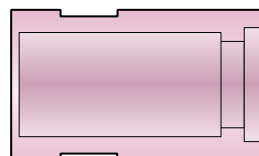
Externally  
Threaded Head



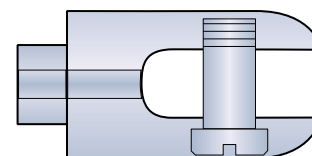
Break Pin



Bearings



Body



Internally  
Threaded Head

## REPLACEMENT PINS FOR 5/8" SWIVEL

Part No.	Break Load		Color
	(lb)	(N)	
08017305	200	890	Green/Black
08017405	250	1,112	Blue/White
08017805	300	1,334	Blue/Violet
08016905	450	2,002	Blue/Yellow
08017205	600	2,669	Orange/Black
08017505	650	2,891	Brown/White
08017905	750	3,336	Orange/Violet

## REPLACEMENT PINS FOR 7/8" SWIVEL

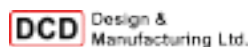
Part No.	Break Load		Color
	(lb)	(N)	
08017306	200	890	Green/Black
08017406	250	1,112	Blue/White
08016905	450	2,002	Blue/Yellow
08017205	600	2,669	Orange/Black
08017505	650	2,891	Brown/White
08017905	750	3,336	Orange/Violet
08018106	150	667	White
08018306	200	890	Green
08018006	250	1,112	Blue
08017606	300	1,334	Brown
08018405	350	1,557	Black/Green
08075305	400	1,779	Blue/Black
08015805	450	2,002	Blue/Yellow
08076505	500	2,224	Orange/Red
08018505	550	2,446	Blue/Green
08015005	600	2,669	Orange/Black
08018605	650	2,891	Slate/Green
08076005	700	3,114	Orange/White
08075505	750	3,336	Orange/Violet
08018705	800	3,558	Red/Yellow
08018805	850	3,781	Black/Yellow
08076605	900	4,003	Orange/Yellow
08015705	1,000	4,448	Green/White
08018905	1,100	4,893	Brown/Yellow
08015205	1,200	5,338	Brown/White
08019105	1,300	5,782	Brown/Yellow
08074605	1,400	6,227	Green/Red
08076905	1,500	6,672	Green/Yellow
08019205	1,600	7,117	Black/White
08019305	1,700	7,562	Red/White
08017705	1,800	8,006	Brown/Black





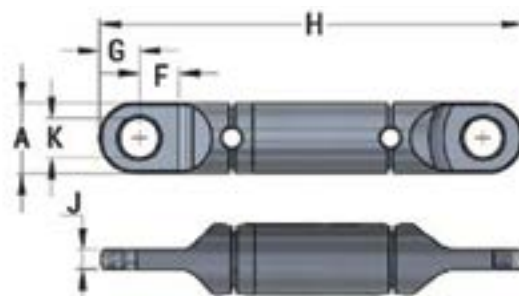
## WIRE BREAKAWAY CONNECTOR

### SERIES 00531



The Wire Breakaway Connector is our most recent addition to our family of breakaway connectors. This connector uses a wire instead of a pin to achieve the smallest of break loads. The two-piece design ensures you don't lose parts of your connector when separation does occur. The product is manufactured from stainless steel to provide years of service. Originally designed to pull 1/2" medium density polyethylene or light duty fiber optic cable, our premier set of breakaway wires designed for this connector will break at different load capacities ensuring your product is protected from damage caused by over-pulling. Break loads from 15 to 200 lb are available.

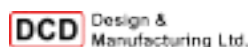
*Wire kits are sold separately in packs of 10.*



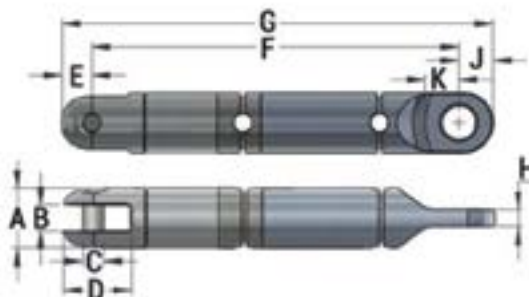
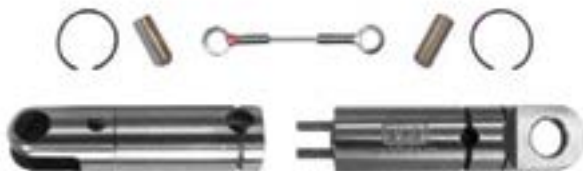
Part No.	A	B	C	D	E	F	G	H	J	K	Weight
00531-010	7/8"	-	-	-	-	1/2"	1/2"	5-11/32"	1/4"	1/2"	0.51 lb

## WIRE BREAKAWAY SWIVEL

### SERIES 00551



This product is similar to our Wire Breakaway Connector (00531 series) as it protects the utility being installed from overload with the addition of a built-in swivel. Changing a wire takes just seconds. *Wire kits are sold separately in packs of 10.*



Part No.	A	B	C	D	E	F	G	H	J	K	Weight
00551-010	7/8"	3/8"	5/16"	31/32"	1/2"	5-3/8"	6-1/16"	1/4"	1/2"	1/2"	0.75lb

## BREAKAWAY WIRE KITS

Metric sizing is also available, as requested

Part No. (10 Wire Kits)	Breaking Point (+/- 10%)	Color Code
00536-015	15 lb	Yellow
00536-022	22 lb	Orange
00536-050	50 lb	Brown
00536-065	64 lb	Green
00536-080	80 lb	Purple

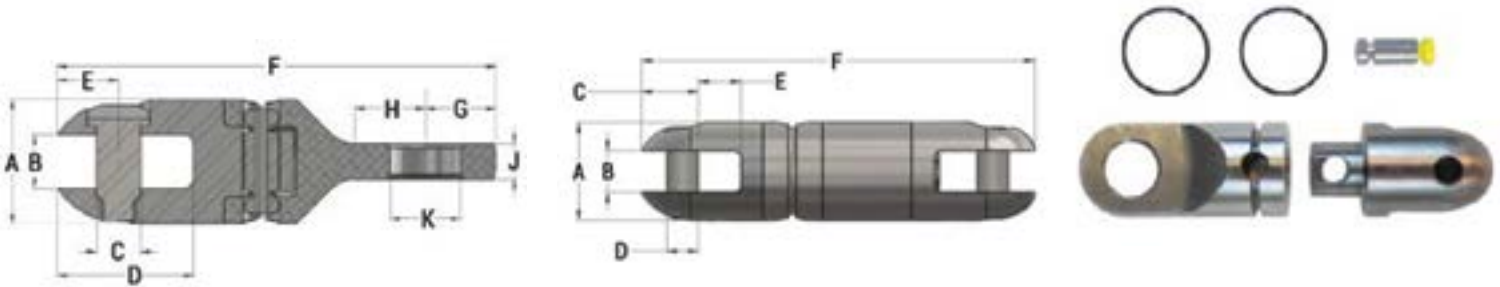
Part No. (10 Wire Kits)	Breaking Point (+/- 10%)	Color Code
00536-100	100 lb	Red
00536-120	120 lb	Blue
00536-140	140 lb	Turquoise
00536-185	185 lb	Pink
00536-200	200 lb	Gray

## MIN-E-MAX™ BREAKAWAY CONNECTORS

### SERIES 00530

**DCD** Design & Manufacturing Ltd.

The purpose of this product is to protect the utility being installed from overload. Typically, they would be used during the installation of fiber optic cable or very small gas ducting where the connector can be preset to breakaway at a predetermined load, thus protecting the fibers or the duct. The breakaway pins may be changed to allow the same connector or to be used with a variety of different breakaway pins. Changing a pin takes just seconds. *Breakaway Pin Kits are sold separately in packs of 10.*



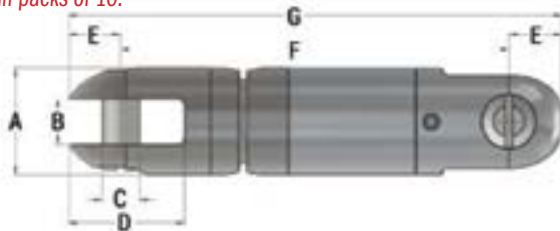
Part No.	A	B	C	D	E	F	G	H	J	K	Use Breakaway Pin Kits	Weight
00530-005	5/8"	9/32"	7/32"	3/16"	9/32"	2-1/8"	-	-	-	-	Group A	0.10 lb
00530-010	7/8"	3/8"	5/16"	31/32"	7/16"	1/2"	1/2"	1/2"	1/4"	1/2"	Group B	0.25 lb
00530-020	1-1/4"	1/2"	3/4"	13/32"	9/16"	5-1/16"	-	-	-	-	Group C	1.03 lb

## BREAKAWAY SWIVEL

### SERIES 00550

**DCD** Design & Manufacturing Ltd.

This product is similar to our Breakaway Connector (00530 series) as it protects the utility being installed from overload with the addition of a built-in swivel. The breakaway pins may be changed to allow the same connector or to be used with a variety of different breakaway pins. Changing a pin takes just seconds. *Breakaway Pin Kits are sold separately in packs of 10.*



Part No.	A	B	C	D	E	F	G	Use Breakaway Pin Kits	Weight
00550-005	5/8"	9/32"	3/16"	11/16"	1/4"	2-3/4"	3-1/4"	Group A	0.17 lb
00550-010	7/8"	3/8"	5/16"	31/32"	7/16"	3-3/16"	4-3/16"	Group B	0.42 lb
00550-020	1-1/4"	17/32"	13/32"	1-9/32"	17/32"	4-1/2"	5-9/16"	Group C	1.20 lb

## BREAKAWAY WIRE KITS

Metric sizing is also available, as requested

### GROUP A

Part No. (10 Wire Kits)	Breaking Point (+/- 10%)	Color Code
00555-00125	125 lb	Green
00555-0015	150 lb	Black
00555-002	200 lb	White
00555-003	300 lb	Purple
00555-0034	340 lb	Red
00555-004	400 lb	Yellow
00555-0045	450 lb	Blue
00555-006	600 lb	Orange
00555-007	675 lb	Black

### GROUP B

Part No. (10 Wire Kits)	Breaking Point (+/- 10%)	Color Code
00535-002	200 lb	White
00535-004	400 lb	Yellow
00535-005	500 lb	Green
00535-006	600 lb	Orange
00535-006S	600 lb	Blue
00535-010	1,000 lb	Red

### GROUP C

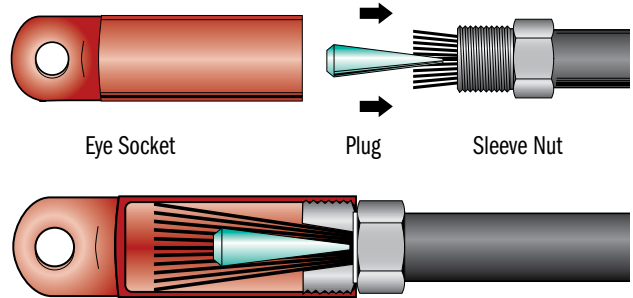
Part No. (10 Wire Kits)	Breaking Point (+/- 10%)	Color Code
00555-013	1,370 lb	White
00555-018	1,800 lb	Green
00555-020	2,000 lb	Blue
00555-027	2,700 lb	Black
00555-036	3,600 lb	Yellow
00555-040	4,000 lb	Red

## REUSABLE POWER CABLE PULLING EYES



Condux non-crimp Reusable Cable Pulling Eyes waste virtually no cable and all components are completely reusable. These eyes will remain firmly secured on the cable for a confident pull. No special tools or crimper's are required for installation.

Three designs of Reusable Power Pulling Eyes are available: Clevis Head, Standard, and Swivel Head.



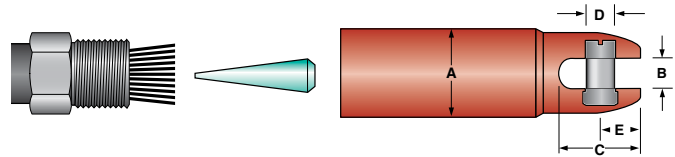
## REUSABLE POWER CABLE PULLING EYES

### CLEVIS HEAD



**Note:** Will not work on flat Aluminum Stranded Conductor

The Clevis Head Power Pulling Eyes feature a slotted head with clevis pin to allow direct attachment to a Condux multiple pulling harness. When pulling multiple cables into a single conduit, the conductors can be attached to a harness and installation is simplified to a single pull of one assembly. Each Clevis Head Power Pulling Eye includes a clevis socket, sleeve nut and plug.



Part No.	Cable Size	Color	Max. Conductor Dia.		Max. Eye O.D.		Slot Width		Slot Depth		Pin Dia.		Pin center		Replacement Plug Part No.	Load Rating	
			(in)	(mm)	(in)	(mm)	(in)	(mm)	(in)	(mm)	(in)	(mm)	(in)	(mm)		lb	kg
*08918150	2500 kcmil	Green	1.824"	46	3.00"	76	1.00"	25	2.80"	71	.88"	22	1.23"	31	08918123	25000	11340
*08918050	2000 kcmil	Red	1.601"	41	2.50"	64	1.00"	25	2.80"	71	.88"	22	1.23"	31	08918023	25000	11340
*08917750	1750 kcmil	Yellow	1.526"	39	2.50"	64	1.00"	25	2.80"	71	.88"	22	1.23"	31	08917723	25000	11340
*08917950	1500 kcmil	Black	1.412"	36	2.38"	60	.75"	19	1.78"	45	.63"	16	.72"	18	08917923	15000	6804
*08917850	1250 kcmil	Blue	1.289"	33	2.25"	57	.75"	19	1.78"	45	.63"	16	.72"	18	08917823	15000	6804
*08917150	1000 kcmil	Orange	1.152"	29	2.06"	52	.75"	19	1.78"	45	.63"	16	.72"	18	08917123	15000	4536
*08917250	750 kcmil	Brown	.998"	25	1.75"	44	.63"	16	1.59"	40	.56"	14	.78"	20	08917223	10000	4536
*08917350	700 kcmil	Gray	.964"	24	1.75"	44	.63"	16	1.59"	40	.56"	14	.78"	20	08917323	10000	4536
*08918250	600 kcmil	Green	.937"	24	1.75"	44	.63"	16	1.59"	40	.56"	14	.78"	20	08918223	10000	3175
*08917450	500 kcmil	Yellow	.813"	21	1.44"	37	.59"	15	1.41"	36	.44"	11	.59"	15	08917423	70000	2268
*08918350	400 kcmil	Black	.713"	18	1.44"	37	.59"	15	1.41"	36	.44"	11	.59"	15	08918323	5000	1134
*08917550	350 kcmil	White	.681"	17	1.25"	32	.56"	14	1.34"	34	.38"	10	.59"	15	08917523	2500	1134
**08960350	250 kcmil	Blue	.575"	15	1.13"	29	.38"	10	1.06"	27	.31"	8	.53"	13	08960323	2500	1134
**08960450	4/0 AWG	Green	.528"	13	1.00"	25	.38"	10	1.06"	27	.31"	8	.53"	13	08960423	2500	1134
**08960950	3/0 AWG	Orange	.475"	12	1.00"	25	.38"	10	1.06"	27	.31"	8	.53"	13	08960923	2500	1134
**08960850	2/0 AWG	Black	.419"	11	1.00"	25	.38"	10	1.06"	27	.31"	8	.53"	13	08960823	2500	1134
**08960550	1/0 AWG	Red	.373"	9	0.88"	22	.38"	10	1.06"	27	.31"	8	.53"	13	08960523	2500	1134

\*Compatible with all Condux pulling harness legs

\*\*Compatible with 1/8" (3mm) and 1/4" (6mm) Condux pulling harness legs



## REUSABLE POWER CABLE PULLING EYES

### STANDARD HEAD



The Standard Head Power Pulling Eyes are an excellent alternative when pulling multiple cables into a single conduit. Single conductors can be attached to a Condux Multiple Pulling Harness with links or with Condux swivels. Installation is then simplified to a single pull of one assembly. Each Standard Power Pulling Eye includes an eye socket, sleeve nut and plug.



**Note:** Will not work on flat Aluminum Stranded Conductor

Part No.	Cable Size	Color	Max. Conductor Dia.		Max. Eye O.D.		Hole Diameter		Eye Thickness		Eye Width		Replacement Plug	Working Load	
			(in)	(mm)	(in)	(mm)	D	T	R	Part No.	lb	kg			
08918455	6000 kcmil	Orange	2.785"	71	4.50"	114	1.31"	33	1.50"	38	1.22"	31	08918423	59,000	262.4
08918440	5000 kcmil	White	2.500"	64	4.50"	114	1.31"	33	1.50"	38	1.22"	31	08918423	59,000	262.4
08918450	4000 kcmil	Yellow	2.220"	56	4.00"	102	1.25"	32	1.50"	38	1.25"	32	08918423	42,500	189.0
08918445	3500 kcmil	Black	2.160"	55	4.00"	102	1.25"	32	1.50"	38	1.25"	32	08918423	42,500	189.0
08918430	3000 kcmil	Gray	2.030"	52	4.00"	102	0.88"	22	.94"	24	.81"	21	08918423	26,000	115.6
08918585	2750 kcmil	White	1.964"	50	4.00"	102	0.88"	22	.94"	24	.81"	21	08918423	26,000	115.6
08918580	2500 kcmil	Green	1.923"	49	4.00"	67	0.88"	22	.94"	24	.81"	21	08918123	25,000	115.6
08918575	2000 kcmil	Red	1.700"	43	2.63"	67	1.00"	25	.88"	22	.75"	19	08918023	25,000	111.2
08918570	1750 kcmil	Yellow	1.625"	41	2.63"	67	1.00"	25	.88"	22	.75"	19	08917723	25,000	111.2
08918565	1500 kcmil	Black	1.469"	37	2.63"	67	1.00"	25	.88"	22	.75"	19	08917923	25,000	111.2
08918560	1250 kcmil	Blue	1.328"	34	2.63"	51	1.00"	25	.88"	22	.75"	19	08917823	13,500	111.2
08918555	1000 kcmil	Orange	1.203"	31	2.00"	51	.69"	17	.63"	16	.59"	15	08917123	13,500	60.0
08918550	750 kcmil	Brown	1.031"	26	2.00"	51	.69"	17	.63"	16	.59"	15	08917223	13,500	60.0
08918545	700 kcmil	Gray	1.00"	25	2.00"	51	.69"	17	.63"	16	.59"	15	08917323	13,500	60.0
08918540	600 kcmil	Green	.906"	23	2.00"	48	.69"	17	.63"	16	.59"	15	08918223	8,500	60.0
08918535	500 kcmil	Yellow	.843"	21	1.88"	48	.69"	17	.63"	16	.59"	15	08917423	8,500	37.8
08918530	400 kcmil	Black	.750"	19	1.88"	48	.69"	17	.50"	13	.59"	15	08918323	8,500	37.8
08918525	350 kcmil	White	.718"	18	1.88"	32	.50"	13	.50"	13	.59"	15	08917523	8,500	37.8
08918520	250 kcmil	Blue	.640"	16	1.25"	32	.50"	13	.50"	13	.38"	10	08960323	6,500	28.9
08918515	4/0 AWG	Green	.531"	13	1.25"	32	.50"	13	.50"	13	.38"	10	08960423	6,500	28.9
08918510	3/0 AWG	Orange	.475"	12	1.25"	32	.50"	13	.50"	13	.38"	10	08960923	6,500	28.9
08918505	2/0 AWG	Black	.431"	11	1.25"	32	.50"	13	.50"	13	.38"	10	08960823	6,500	28.9
08918500	1/0 AWG	Red	.390"	10	1.25"	32	.50"	13	.50"	13	.38"	10	08960523	6,500	28.9

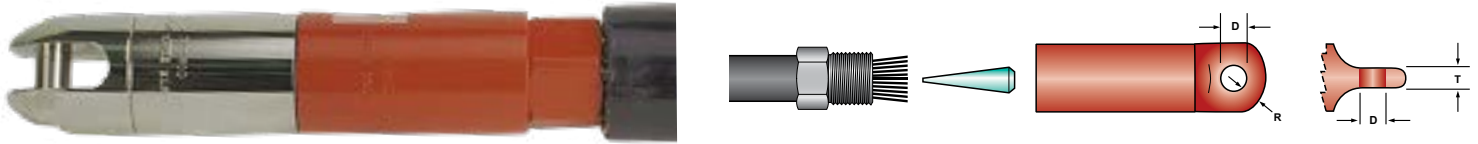
3:1 Safety Factor

## REUSABLE POWER CABLE PULLING EYES

### SWIVEL HEAD



The Swivel Head Power Pulling Eye is a hybrid tool that combines features from standard reusable power pulling eyes and Condux swivel for superior performance. A swivel head prevents twisting and binding of the cable as it is installed. It eliminates the need for a separate swivel on each pulling eye when installing single cables into individual conduits or multiple cables into a single conduit. Each Swivel Head Power Pulling Eye includes a swivel head, sleeve nut and plug.



**Note:** Will not work on flat Aluminum Stranded Conductor

Part No.	Cable Size	Color	Max. Conductor Dia.		Max. Eye O.D.		Slot Width		Slot Depth		Pin Diameter		Pin Center		Replacement Plug Part No.	Load Rating	
			(in)	(mm)	(in)	(mm)	(in)	(mm)	(in)	(mm)	(in)	(mm)	(in)	(mm)		lb	kg
*08918580	2500 kcmil	Green	1.824"	46	3.00"	76	1.00"	25	2.80"	71	.88"	22	1.23"	31	08918123	25,000	11340
*08918575	2000 kcmil	Red	1.601"	41	2.50"	64	1.00"	25	2.80"	71	.88"	22	1.23"	31	08918023	25,000	11340
*08918570	1750 kcmil	Yellow	1.526"	39	2.50"	64	1.00"	25	2.80"	71	.88"	22	1.23"	31	08917723	25,000	11340
*08918565	1500 kcmil	Black	1.412"	36	2.38"	60	.75"	19	1.78"	45	.63"	16	.72"	18	08917923	15,000	6804
*08918560	1250 kcmil	Blue	1.289"	33	2.25"	57	.75"	19	1.78"	45	.63"	16	.72"	18	08917823	15,000	6804
*08918555	1000 kcmil	Orange	1.152"	29	2.06"	52	.75"	19	1.78"	45	.63"	16	.72"	18	08917123	15,000	6804
*08918550	750 kcmil	Brown	.998"	25	1.75"	44	.63"	16	1.59"	40	.56"	14	.78"	20	08917223	10,000	4536
*08918545	700 kcmil	Gray	.964"	24	1.75"	44	.63"	16	1.59"	40	.56"	14	.78"	29	08917323	10,000	4536
*08918540	600 kcmil	Green	.9367"	24	1.75"	44	.63"	16	1.59"	40	.56"	14	.78"	19	08918223	10,000	4536
*08918535	500 kcmil	Yellow	.813"	21	1.44"	3	.56"	14	1.31"	33	.44"	11	.56"	14	08917423	10,000	4536
*08918530	400 kcmil	Black	.7125"	18	1.44"	37	.56"	14	1.31"	33	.44"	11	.56"	14	08918323	7,000	3175
*08918525	350 kcmil	White	.681"	17	1.25"	32	.56"	14	1.34"	34	.38"	10	.59"	15	08917523	5,000	2268
*08918520	250 kcmil	Blue	.575"	15	1.13"	29	.38"	10	1.03"	26	.31"	8	.53"	13	08960323	2,500	1134
*08918515	4/0 AWG	Green	.528"	13	1.00"	25	.38"	10	1.03"	26	.31"	8	.53"	13	08960423	2,500	1134
*08918510	3/0 AWG	Orange	.475"	12	1.00"	25	.38"	10	1.03"	26	.31"	8	.53"	13	08960923	2,500	1134
*08918505	2/0 AWG	Black	.419"	11	1.00"	25	.38"	10	1.03"	26	.31"	8	.53"	13	08960823	2,500	1134
*08918500	1/0 AWG	Red	.373"	10	.68"	22	.38"	10	1.03"	26	.31"	8	.53"	13	08960523	2,500	1134

\*Compatible with all Condux pulling harness legs

\*\*Compatible with 1/8" (3mm) and 1/4" (6mm) Condux pulling harness legs



## REUSABLE POWER CABLE PULLING EYE KITS



For cost savings and ease of ordering, Condux has prepared kits for Clevis, Standard and Swivel Head Reusable Power Pulling Eyes.

Part No.	Description
<b>08917010</b>	Kit for 350 to 1000 kcmil power pulling eyes with clevis ends Includes 3 each of the eyes for 350 to 1000 kcmil cable <b>Note:</b> Does no include 400 or 600 kcmil

### Clevis Head Kits

<b>08917060</b>	Kit for 1/0 AWG to 250 kcmil power pulling eyes with clevis ends Includes three each of the eyes for 1/0 AWG to 250 kcmil cable <b>Note:</b> Does not include 3/0 AWG
-----------------	---

### Standard Head Kits

Part No.	Description
<b>08917020</b>	Kit for 350 to 1000 kcmil power pulling eyes with clevis ends Includes 3 each of the eyes for 350 to 1000 kcmil cable <b>Note:</b> Does no include 400 or 600 kcmil
<b>08917070</b>	Kit for 1/0 AWG to 250 kcmil power pulling eyes with clevis ends Includes three each of the eyes for 1/0 AWG to 250 kcmil cable

### Swivel Head Kits

Part No.	Description
<b>08917030</b>	Kit for 350 to 1000 kcmil power pulling eyes with clevis ends Includes 3 each of the eyes for 350 to 1000 kcmil cable <b>Note:</b> Does no include 400 or 600 kcmil
<b>08917080</b>	Kit for 1/0 AWG to 250 kcmil power pulling eyes with clevis ends Includes three each of the eyes for 1/0 AWG to 250 kcmil cable

### Replacement Case

Part No.	Description
<b>08917086</b>	Replacement case is available for the Reusable Power Pulling Eyes. This case includes an improved foam insert for the storage of the power pulling eyes.





## SWIVEL-GRIP™

### SERIES 00925

**DCD** Design & Manufacturing Ltd.

The Swivel Grip™ pulling eye is reusable and has a built in swivel. It is constructed with all the features of the DCD Line Swivel (00505 series). The clevis head will attach directly onto a bridle sling or other pulling rope. Special cone nut sizes for compact cable are available upon request.



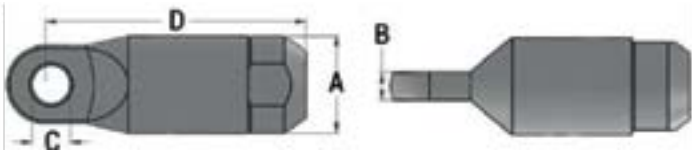
Part No.	Max. Cable Size	Max. Core Dia.	A	B	C	D	Weight	Swivel-Grip Components			Fits Bridle Sling
								Body	Threaded Cone Nut	Tapered Insert	
00925-001	1/0 AWG	0.39" 9.9 mm	1-1/4" 32 mm	13/32" 10.3 mm	3/8" 9.5 mm	5-5/8" 143 mm	1.05 lb 0.47 kg	00926-001	24006-001	24005-001	1/4"
00925-002	2/0 AWG	.44" 11.1 mm	1-1/4" 32 mm	13/32" 10.3 mm	3/8" 9.5 mm	5-5/8" 143 mm	1.03 lb 0.46 kg	00926-001	24006-002	24005-001	
00925-003	3/0 AWG	0.50" 12.7 mm	1-1/4" 32 mm	13/32" 10.3 mm	3/8" 9.5 mm	5-5/8" 143 mm	1.08 lb 0.49 kg	00926-001	24006-003	24005-001	
00925-004	4/0 AWG	0.54" 13.7 mm	1-1/4" 32 mm	13/32" 10.3 mm	3/8" 9.5 mm	5-5/8" 143 mm	0.98 lb 0.44 kg	00926-001	24006-004	24005-001	
00925-025	250 MCM	0.61" 15.5 mm	1-1/4" 32 mm	13/32" 10.3 mm	3/8" 9.5 mm	5-5/8" 143 mm	0.93 lb 0.42 kg	00926-001	24006-025	24005-001	1/4" & 3/8"
00925-030	300 MCM	0.62" 15.7 mm	1-7/8" 48 mm	13/32" 10.3 mm	3/8" 9.5 mm	5-5/8" 143 mm	0.92 lb 0.42 kg	00926-001	24006-030	24005-001	
00925-035C	350 MCM Compact	0.65" 16.5 mm	1-7/8" 48 mm	11/16" 17.4 mm	5/8" 15.9 mm	7-1/8" 181 mm	3.34 lb 1.51 kg	00926-035	24006-035C	24005-035	
00925-035	350 MCM	0.71" 18.0 mm	1-7/8" 48 mm	11/16" 17.4 mm	5/8" 15.9 mm	7-1/8" 181 mm	3.30 lb 1.49 kg	00926-035	24006-035	24005-035	1/4" & 3/8"
00925-050	500 MCM	0.81" 20.6 mm	1-7/8" 48 mm	11/16" 17.4 mm	5/8" 15.9 mm	7-1/8" 181 mm	3.20 lb 1.45 kg	00926-035	24006-035	24005-035	
00925-060	600 MCM	0.91" 23.1 mm	1-7/8" 48 mm	11/16" 17.4 mm	5/8" 15.9 mm	7-1/8" 181 mm	3.10 lb 1.41 kg	00926-035	24006-050	24005-035	
00925-070	700 MCM	0.97" 24.6 mm	2-1/8" 54 mm	25/32" 19.8 mm	11/16" 17.4 mm	8" 203 mm	4.70 lb 2.1 kg	00926-070	24006-060	24005-070	3/8" & 1/2"
00925-075C	750 MCM Compact	0.94" 23.8 mm	2-1/8" 54 mm	25/32" 19.8 mm	11/16" 17.4 mm	8" 203 mm	4.90 lb 2.2 kg	00926-070	24006-070	24005-070	
00925-075	750 MCM	1.00" 25.4 mm	2-1/8" 54 mm	25/32" 19.8 mm	11/16" 17.4 mm	8" 203 mm	4.70 lb 2.1 kg	00926-070	24006-075C	24005-070	
00925-100C	500 MCM <sup>2</sup> Custom	1.03" 26.2 mm	2-1/8" 54 mm	25/32" 19.8 mm	11/16" 17.4 mm	8" 203 mm	4.40 lb 2.0 kg	00926-070	24006-075	24005-070	3/8" & 1/2"
00925-100	1000 MCM	1.15" 29.2 mm	2-1/8" 54 mm	25/32" 19.8 mm	11/16" 17.4 mm	8" 203 mm	4.50 lb 2.0 kg	00926-070	24006-100	24005-070	

## POWER-GRIP™ (LUG)

### SERIES 24000

**DCD** Design & Manufacturing Ltd.

The Power-Grip™ pulling eye is reusable and has a lug style head that will attach directly to a swivel. All materials are stainless steel. Only four body sizes are used to cover the range from 1/0 to 5000 MCM cable. Note that these pulling eyes should always be used with a Line Swivel (00505 series).



Part No.	Cable Size	Max. Conductor Dia.	A	B	C	D	Weight	Swivel-Grip Components			Fits Bridle Sling
								Body	Threaded Cone Nut	Tapered Insert	
24000-001	1/0 AWG	0.39" 9.9 mm	1-1/4" 32 mm	11/32 8.7 mm	1/2" 13 mm	3-4/8" 98 mm	0.68 lb 0.30 kg	24007-001	24006-001	24005-001	
24000-002	2/0 AWG	.44" 11.1 mm	1-1/4" 32 mm	11/32 8.7 mm	1/2" 13 mm	3-4/8" 98 mm	0.67 lb 0.30 kg	24007-001	24006-002	24005-001	
24000-003	3/0 AWG	0.50" 12.7 mm	1-1/4" 32 mm	11/32 8.7 mm	1/2" 13 mm	3-4/8" 98 mm	0.64 lb 0.29 kg	24007-001	24006-003	24005-001	00505-010 to 00505-027
24000-004	4/0 AWG	0.54" 13.7 mm	1-1/4" 32 mm	11/32 8.7 mm	1/2" 13 mm	3-4/8" 98 mm	0.61 lb 0.27 kg	24007-001	24006-004	24005-001	
24000-025	250 MCM	0.61" 15.5 mm	1-1/4" 32 mm	11/32 8.7 mm	1/2" 13 mm	3-4/8" 98 mm	0.58 lb 0.26 kg	24007-001	24006-025	24005-001	
24000-030	300 MCM	0.62" 15.7 mm	1-7/8" 48 mm	13/32 10.3 mm	1/2" 13 mm	3-4/8" 98 mm	0.57 lb 0.26 kg	24007-001	24006-030	24005-001	
24000-035C	350 MCM Compact	0.65" 16.5 mm	1-7/8" 48 mm	3/8" 9.5 mm	5/8" 15.9 mm	4-3/4" 120 mm	1.88 lb 0.85 kg	24007-035	24006-035C	24005-035	
24000-035	350 MCM	0.71" 18.0 mm	1-7/8" 48 mm	3/8" 9.5 mm	5/8" 15.9 mm	4-3/4" 120 mm	1.84 lb 0.83 kg	24007-035	24006-035	24005-035	00505-015 to 00505-030
24000-050	500 MCM	0.81" 20.6 mm	1-7/8" 48 mm	3/8" 9.5 mm	5/8" 15.9 mm	4-3/4" 120 mm	1.75 lb 0.79 kg	24007-035	24006-035	24005-035	
24000-060	600 MCM	0.91" 23.1 mm	1-7/8" 48 mm	3/8" 9.5 mm	5/8" 15.9 mm	4-3/4" 120 mm	1.73 lb 0.79 kg	24007-035	24006-050	24005-035	
24000-070	700 MCM	0.97" 24.6 mm	2-1/8" 54 mm	1/2" 13 mm	13/16" 20.5 mm	5-5/8" 143 mm	2.55 lb 1.15 kg	24007-070	24006-060	24005-070	
24000-075C	750 MCM Compact	0.94" 23.8 mm	2-1/8" 54 mm	1/2" 13 mm	13/16" 20.5 mm	5-5/8" 143 mm	2.51 lb 1.14 kg	24007-070	24006-070	24005-070	00505-020 to 00505-035
24000-075	750 MCM	1.00" 25.4 mm	2-1/8" 54 mm	1/2" 13 mm	13/16" 20.5 mm	5-5/8" 143 mm	2.47 lb 1.12 kg	24007-070	24006-075C	24005-070	
24000-100C	500 MCM <sup>2</sup> Compact	1.03" 26.2 mm	2-1/8" 54 mm	1/2" 13 mm	13/16" 20.5 mm	5-5/8" 143 mm	2.40 lb 1.09 kg	24007-070	24006-075	24005-070	
*24000-100	1000 MCM	1.15" 29.2 mm	2-1/8" 54 mm	1/2" 13 mm	13/16" 20.5 mm	5-5/8" 143 mm	2.30 lb 1.04 kg	24007-125	24006-100	24005-070	
*24000-125	1250 MCM	1.29" 32.8 mm	2-3/4" 70 mm	3/4" 19 mm	1-1/32" 26 mm	7-15/16" 202 mm	6.37 lb 2.88 kg	24007-125	24006-125	24005-125	
*24000-150	1500 MCM	1.41" 35.8 mm	2-3/4" 70 mm	3/4" 19 mm	1-1/32" 26 mm	7-15/16" 202 mm	6.13 lb 2.78 kg	24007-125	24006-150	24005-125	
*24000-175	1750 MCM	1.53" 38.9 mm	2-3/4" 70 mm	3/4" 19 mm	1-1/32" 26 mm	7-15/16" 202 mm	5.84 lb 2.64 kg	24007-125	24006-175	24005-125	00505-035 to 00505-041
*24000-200	2000 MCM	1.63" 41.4 mm	2-3/4" 70 mm	3/4" 19 mm	1-1/32" 26 mm	7-15/16" 202 mm	5.53 lb 2.50 kg	24007-125	24006-200	24005-125	
*24000-200C	45 mm 2500 MCM	1.75" 44.5 mm	2-3/4" 70 mm	3/4" 19 mm	1-1/32" 26 mm	7-15/16" 202 mm	5.40 lb 2.45 kg	24007-125	24006-200C	24005-125	
*24000-300	3000 MCM	1.85" 47.0 mm	2-3/4" 70 mm	3/4" 19 mm	1-1/32" 26 mm	7-15/16" 202 mm	4.64 lb 2.11 kg	24007-125	24006-200	24005-125	
*24000-300C	1800 MCM <sup>2</sup>	206" 52.4 mm	4-1/2" 114 mm	1" 25 mm	1-3/4" 44.5 mm	11-11/16" 297 mm	25.8 lb 11.7 kg	24007-125	24006-300C	24005-500	00505-045 & 00505-050
*24000-500	5000 MCM	2.52" 64.0 mm	4-1/2" 114 mm	1" 25 mm	1-3/4" 44.5 mm	11-11/16" 297 mm	23.7 lb 10.8 kg	24007-125	24006-500	24005-500	

\*Larger Power-Grips are machined from alloy steel and plated

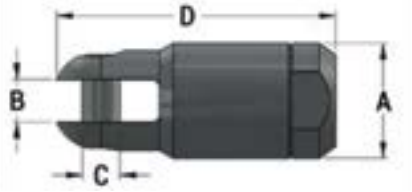
## POWER-GRIP™ (CLEVIS)

### SERIES 24100

**DCD** Design & Manufacturing Ltd.

The Power-Grip™ pulling eye is reusable and has a clevis style head that will attach directly over the looped ends of the slings or other pulling attachments. All materials are stainless steel. Only four body sizes are used to cover the range from 1/0 to 2000 MCM cable.

**Note:** that these pulling eyes should always be used with a Line Swivel (00505 series)



Part No.	Cable Size	Max. Conductor Dia.	A	B	C	D	Weight	Swivel-Grip Components			Fits Bridle Sling
								Body	Threaded Cone Nut	Tapered Insert	
24100-001	1/0 AWG	0.39" 9.9 mm	1-1/4" 32 mm	11/32 8.7 mm	1/2" 13 mm	3-4/8" 98 mm	0.68 lb 0.30 kg	24008-001	24006-001	24005-001	
24100-002	2/0 AWG	.44" 11.1 mm	1-1/4" 32 mm	11/32 8.7 mm	1/2" 13 mm	3-4/8" 98 mm	0.67 lb 0.30 kg	24008-001	24006-002	24005-001	
24100-003	3/0 AWG	0.50" 12.7 mm	1-1/4" 32 mm	11/32 8.7 mm	1/2" 13 mm	3-4/8" 98 mm	0.64 lb 0.29 kg	24008-001	24006-003	24005-001	1/4"
24100-004	4/0 AWG	0.54" 13.7 mm	1-1/4" 32 mm	11/32 8.7 mm	1/2" 13 mm	3-4/8" 98 mm	0.61 lb 0.27 kg	24008-001	24006-004	24005-001	
24100-025	250 MCM	0.61" 15.5 mm	1-1/4" 32 mm	11/32 8.7 mm	1/2" 13 mm	3-4/8" 98 mm	0.58 lb 0.26 kg	24008-001	24006-025	24005-001	
24100-030	300 MCM	0.62" 15.7 mm	1-7/8" 48 mm	13/32 10.3 mm	1/2" 13 mm	3-4/8" 98 mm	0.57 lb 0.26 kg	24008-001	24006-030	24005-001	
24100-035C	350 MCM Compact	0.65" 16.5 mm	1-7/8" 48 mm	3/8" 9.5 mm	5/8" 15.9 mm	4-3/4" 120 mm	1.88 lb 0.85 kg	24008-035	24006-035C	24005-035	
24100-035	350 MCM	0.71" 18.0 mm	1-7/8" 48 mm	3/8" 9.5 mm	5/8" 15.9 mm	4-3/4" 120 mm	1.84 lb 0.83 kg	24008-035	24006-035	24005-035	1/4" to 3/8"
24100-050	500 MCM	0.81" 20.6 mm	1-7/8" 48 mm	3/8" 9.5 mm	5/8" 15.9 mm	4-3/4" 120 mm	1.75 lb 0.79 kg	24008-035	24006-035	24005-035	
24100-060	600 MCM	0.91" 23.1 mm	1-7/8" 48 mm	3/8" 9.5 mm	5/8" 15.9 mm	4-3/4" 120 mm	1.73 lb 0.79 kg	24008-035	24006-050	24005-035	
24100-070	700 MCM	0.97" 24.6 mm	2-1/8" 54 mm	1/2" 13 mm	13/16" 20.5 mm	5-5/8" 143 mm	2.55 lb 1.15 kg	24008-070	24006-060	24005-070	
24100-075C	750 MCM Compact	0.94" 23.8 mm	2-1/8" 54 mm	1/2" 13 mm	13/16" 20.5 mm	5-5/8" 143 mm	2.51 lb 1.14 kg	24008-070	24006-070	24005-070	
24100-075	750 MCM	1.00" 25.4 mm	2-1/8" 54 mm	1/2" 13 mm	13/16" 20.5 mm	5-5/8" 143 mm	2.47 lb 1.12 kg	24008-070	24006-075C	24005-070	3/8" to 1/2"
24100-100C	500 MCM <sup>2</sup> Custom	1.03" 26.2 mm	2-1/8" 54 mm	1/2" 13 mm	13/16" 20.5 mm	5-5/8" 143 mm	2.40 lb 1.09 kg	24008-070	24006-075	24005-070	
*24100-100	1000 MCM	1.15" 29.2 mm	2-1/8" 54 mm	1/2" 13 mm	13/16" 20.5 mm	5-5/8" 143 mm	2.30 lb 1.04 kg	24008-125	24006-100	24005-070	
*24100-125	1250 MCM	1.29" 32.8 mm	2-3/4" 70 mm	3/4" 19 mm	1-1/32" 26 mm	7-15/16" 202 mm	6.37 lb 2.88 kg	24008-125	24006-125	24005-125	
*24100-150	1500 MCM	1.41" 35.8 mm	2-3/4" 70 mm	3/4" 19 mm	1-1/32" 26 mm	7-15/16" 202 mm	6.13 lb 2.78 kg	24008-125	24006-150	24005-125	3/8" to 1/2"
*24100-175	1750 MCM	1.53" 38.9 mm	2-3/4" 70 mm	3/4" 19 mm	1-1/32" 26 mm	7-15/16" 202 mm	5.84 lb 2.64 kg	24008-125	24006-175	24005-125	
*24100-200	45 mm Custom	1.63" 41.4 mm	2-3/4" 70 mm	3/4" 19 mm	1-1/32" 26 mm	7-15/16" 202 mm	5.53 lb 2.50 kg	24008-125	24006-200	24005-125	
*24100-200C	2500 MCM	1.75" 44.5 mm	2-3/4" 70 mm	3/4" 19 mm	1-1/32" 26 mm	7-15/16" 202 mm	5.40 lb 2.45 kg	24008-125	24006-200C	24005-125	

\*Larger Power-Grips are machined from alloy steel and plated



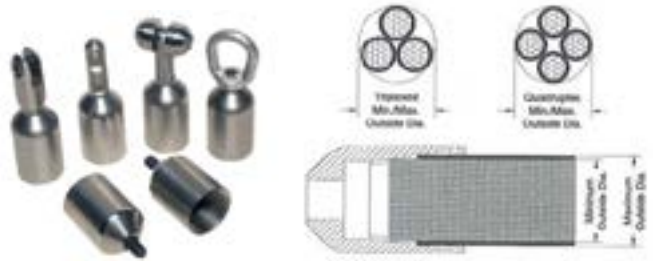
## MULTIPLEX PUSHING EYE

### SERIES 24200

**DCD** Design & Manufacturing Ltd.

This product is designed to be threaded onto the lead end of a group of either triplex or quadplex cables so that they can be pushed through short lengths of ducting. The basic pushing eye comes with only the body and shoulder bolt. There are several different attachments which can be threaded onto the bolt and these must be purchased separately.

Part No.	Minimum Outside Cable Diameter	Maximum Outside Cable Diameter	Weight	Part No.	Leader Attachments
24200-KT1	1.00"	1.59"	2.20 lb	57150-004	Roller Guide
24200-010	1.00"	1.22"	0.63 lb	57160-004	Clevis End
24200-020	1.22"	1.41"	0.67 lb	57120-004	Pulling eye
24200-030	1.41"	1.59"	0.73 lb	90024-037	Eye Nut

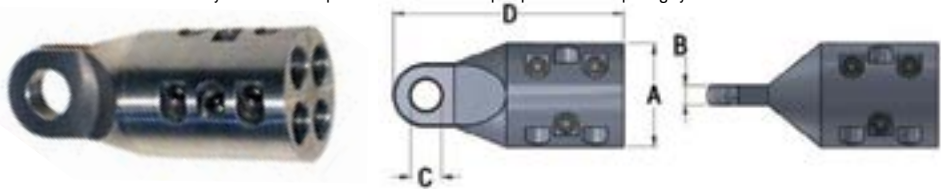


## MULTIPLEX PULLING EYE

### SERIES 24300

**DCD** Design & Manufacturing Ltd.

This stainless steel product is designed to pull either triplex or quadplex cables. The four holes are sized for the cable conductors and each hole has three setscrews to clamp down on the cable. Each product is also supplied with three spare set screws and a hex key. Care needs to be taken pulling around bends or sheaves because there will be extra heavy load on the cables on the outside of the bend and these may cause them to pull loos from their clamped position in the pulling eye.



Part No.	Maximum Cable Size	Maximum Core Size	A	B	C	D	Weight	Use Line Swivel
24300-001	1/0 AWG	0.437"	1-3/4"	3/8"	5/8"	4-15/16"	1.4 lb	00505-015 to 00505-030
24300-004	4/0 AWG	0.593"	2-1/4"	3/8"	5/8"	4-15/16"	2.5 lb	
24300-350	350 MCM	0.750"	2-11/16"	1/2"	13/16"	6"	4.1 lb	00505-20 to 00505-035
24300-500	500 MCM	0.875"	2-7/8"	1/2"	13/16"	6-1/8"	4.5 lb	

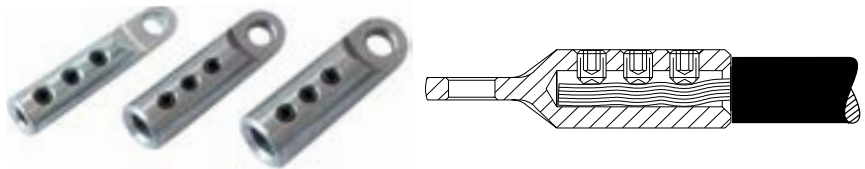
## MINI GRIP

### SERIES 24500

**DCD** Design & Manufacturing Ltd.

This stainless steel product is designed to pull either triplex or quadplex cables. The four holes are sized for the cable conductors and each hole has three setscrews to clamp down on the cable. Each product is also supplied with three spare set screws and a hex key. Care needs to be taken pulling around bends or sheaves because there will be extra heavy load on the cables on the outside of the bend and these may cause them to pull loos from their clamped position in the pulling eye.

Part No.	Maximum Cable Size	Maximum Core Diameter	Body Diameter	Weight
24500-010	4 to 3 AWG	0.33"	3/4"	0.30 lb
24500-406	2 to 1/0 AWG	0.39"	7/8"	0.37 lb
24500-562	2/0 to 4/0 AWG	0.55"	1"	0.44 lb



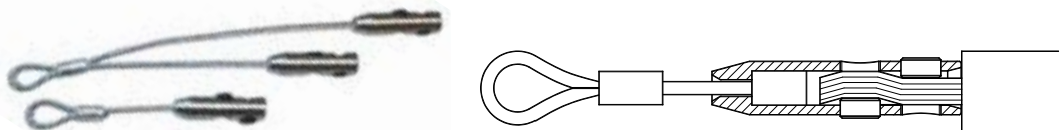
**Note:** that these pulling eyes should always be used with a Line Swivel (00505 series)

## PULLING HARNESS

### SERIES 25000

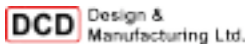
**DCD** Design & Manufacturing Ltd.

The purpose of this product is to allow single or multiple pulls at one time by attaching one or two cables to one pulling harness. The harness legs are manufactured from aircraft quality galvanized wire rope while the connector end is manufactured from stainless steel. The two leg units are staggered in length so the individual connections are not interfering with each other. The safety factor is based on both legs.



Part No.	Description	Wire Diameter	Number of Legs	3:1 Safe Working Load Leg Capacity	3:1 Safe Working Load Total Capacity	Weight
25000-010	Single Leg	1/4"	1	2,300 lb	2,300 lb	1.00 lb
25000-020	Double Leg - Short	1/4"	2	2,300 lb	4,600 lb	1.70 lb
2500-021	Double Leg - Long	1/4"	2	2,300 lb	4,600 lb	2.00 lb
90000-166	Set Screw	-	-	-	-	0.10 lb
00101-375	Hex Key	-	-	-	-	0.28 lb

## CUSTOM KITS



Many contractors have requested custom kits that combine an arrangement of Power-Grips that can be used for pulling multiple sizes of cables. Threaded cone Nuts and Tapered Inserts are common between some sizes, and the kits take advantage of this and provide usage for a range of cable sizes with the least number of components, making the kits economical as well.

The kits are available in the Power-Grip (Lug), Swivel-Grip, and Power-Grip (Clevis) styles, with or without Bridle Slings (23000 series). Shown is a special kit designed for a major mid-west contractor. Their requirement was to pull to three cables of various different sizes.

DCD custom designs foam inserts to fit into a metal carrying box or even this large, durable plastic tow-around case. This keeps the products clean, organized and secure. It is also easy to see if any parts are missing.

Choose from the pre-arranged kits listed or contact Customer Service for options in creating a custom kit most suitable for your operation.



### Kit Style 1 - Size Range: 1/0 AWG to 500 MCM

00925-KT1 Contents	25000-KT1 Contents	24100 KT1 Contents	Quantity	Description	Body Dia.	Maximum Core Dia.
00926-001	24007-001	24008-001	3	Swivel-Grip/Pulling Eye Body 1/0 AWG - 250 MCM	1-1/4"	-
00926-035	24007-035	24008-035	3	Swivel-Grip/Pulling Eye Body 250 - 500 MCM	1-7/8"	-
24006-001	24006-001	24006-001	3	Threaded Cone Nut 1/0 AWG	-	0.39"
24006-004	24006-004	24006-004	3	Threaded Cone Nut 4/0 AWG	-	0.54"
24006-025	24006-025	24006-025	3	Threaded Cone Nut 250 MCM	-	0.61"
24006-035	24006-035	24006-035	3	Threaded Cone Nut 350 MCM	-	0.71"
24006-050	24006-050	24006-050	3	Threaded Cone Nut 500 MCM	-	0.81"
24005-001	24005-001	24005-001	6	Tapered Insert 1/-AWG - 250 MCM	-	-
24005-035	24005-035	24005-035	6	Tapered Insert 350 - 500 MCM	-	-
00101-250	00101-250	00101-250	1	Allen Key 1/4" Long Arm	-	-
00101-375	00101-375	00101-375	1	Allen Key 3/8" Long Arm	-	-
93106-015	93106-015	93106-015	1	Foam Insert Set	-	-
93100-009	93100-009	93100-009	1	Tool (7" L x 19" W x 7-1/2" H)	-	-

## Kit Style 2 - Size Range: 350 to 1000 MCM

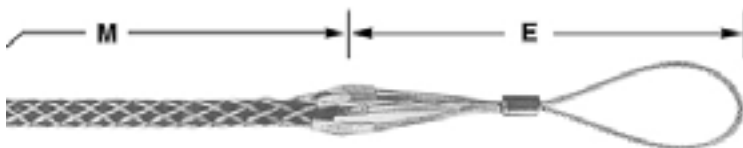
00925-KT1 Contents	25000-KT1 Contents	24100 KT1 Contents	Quantity	Description	Body Dia.	Maximum Core Dia.
00926-035	24007-035	24008-035	3	Swivel-Grip/Pulling Eye Body 350 - 500 MCM	1-7/8"	-
24006-035	24007-035	24006-035	3	Threaded Cone Nut 350 MCM	-	0.71"
24006-050	24006-050	24006-050	3	Threaded Cone Nut 500 MCM	-	0.81"
24005-035	24006-035	24005-035	6	Threaded Insert 350 - 500 MCM	-	-
00926-070	24006-070	24008-070	3	Swivel-Grip/Pulling Eye Body 700 - 1000 MCM	2-1/8"	-
24006-070	24006-070	24006-070	3	Threaded Cone Nut 500 MCM	-	0.97"
24006-075	24006-075	24006-075	3	Threaded Cone Nut 750 MCM	-	1.00"
24006-100	24005-199	24006-100	3	Threaded Cone Nut - 1000 MCM	-	115"
24005-070	24005-070	24005-070	6	Tapered Insert 700 - 1000 MCM	-	-
00101-250	00101-250	00101-250	1	Allen Key 1/4" Long Arm	-	-
00101-375S	00101-375S	00101-375S	1	Allen Key 3/8" Long Arm	-	-
93106-021	93106-021	93106-021	1	Foam Insert Set	-	-
93100-012	93100-012	93100-012	1	Tool (8" L x 24" W x 9" H)	-	-

## Kit Style 3 - Size Range: 1/0 AWG to 1000 MCM

00925-KT1 Contents	25000-KT1 Contents	24100 KT1 Contents	Quantity	Description	Body Dia.	Maximum Core Dia.
00926-001	24007-001	24008-001	3	Swivel-Grip/Pulling Eye Body 1/0 AWG - 250 MCM	1-1/4"	-
24006-001	24006-001	24006-001	3	Threaded Cone Nut 1/0 AWG	-	0.39"
24006-002	24006-002	24006-002	3	Threaded Cone Nut 2/0 AWG	-	0.44"
24006-003	24006-003	24006-003	3	Threaded Cone Nut 3/0 AWG	-	0.50"
24006-004	24006-004		3	Threaded Cone Nut 4/0 AWG	-	0.54"
24006-025	24006-025	24006-025	3	Threaded Cone Nut 250 MCM	-	0.61"
24005-001	24005-001	24005-001	15	Tapered Insert 1/0 AWG - 250 MCM	-	-
00926-035	24007-035	24008-035	3	Swivel-Grip/Pulling Eye Body 350 - 500 MCM	1-7/8"	-
24006-035	24006-035	24006-035	3	Threaded Cone Nut 350 MCM	-	-
24006-050	24006-050	24006-050	3	Threaded Cone Nut 500 MCM	-	-
24005-035	24005-035	24005-035	6	Threaded Insert 350 - 500 MCM	-	-
00925-070	24007-070	24008-070	3	Swivel-Grip/Pulling Eye Body 700 - 1000 MCM	2-1/8"	-
24006-070	24006-070	24006-070	3	Threaded Cone Nut 500 MCM	-	0.97"
24006-075	24006-075	24006-075	3	Threaded Cone Nut 750 MCM	-	1.00"
24006-100	24006-100	24006-100	3	Threaded Cone Nut - 1000 MCM	-	115"
24006-070	24005-070	24005-070	9	Tapered Insert 700 - 1000 MCM	-	-
00101-250	00101-250	00101-250	1	Allen Key 3/8" Long Arm	-	-
00101-375	00101-375	00101-375	1	Allen Key 3/8" Long Arm	-	-
93106-019	93106-019	93106-019	1	Foam Insert Set	-	-
61722-002	61722-002	61722-002	1	Chest (19-1/2" L x 25" W x 12" H)	-	-



## FIBER OPTIC GRIP - FLEXIBLE EYE, LOW PROFILE, DOUBLE/SINGLE WEAVE MESH

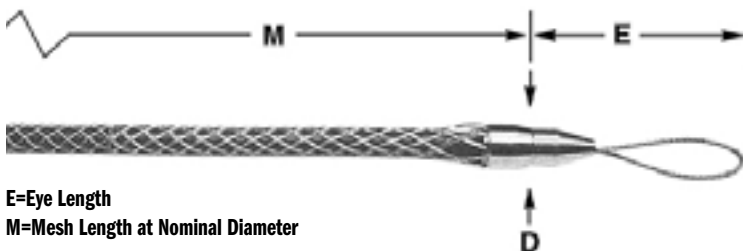


Double/Single weave mesh, galvanized steel for outside plant cable. Used for the installation of fiber optic communication lines either underground, overhead, through conduit or through enclosures. They will fit single cables or cable bundles, are easily installed on the cable and are reusable.

E=Eye Length  
M=Mesh Length at Nominal Diameter

Part No.	Description	Cable Diameter Range		Approximate Breaking Strength		E		M	
		(in)	(mm)	(lb)	(N)	(in)	(mm)	(in)	(mm)
08643753	033-29-1193	.10-.22	3-6	900	4,003	7-1/2"	190	10"	254
08643754	033-29-1194	.21-.35	5-9	1,400	6,227	7-1/2"	190	14"	356
08643755	033-29-1195	.32-.48	8-12	2,000	8,886	8-1/2"	216	19"	483
08643756	033-29-1196	.42-.61	11-15	2,500	11,120	8-1/2"	216	21"	533
08643757	033-29-1197	.53-.74	13-19	3,000	13,344	8-1/2"	216	23"	584
08643758	033-29-1198	.64-.87	16-22	4,200	18,682	8-1/2"	216	25"	635
08643759	033-29-1129	.75-1.00	19-25	4,200	18,682	8-1/2"	216	28"	711

## FIBER OPTIC GRIP - FLEXIBLE EYE



Double/Single weave mesh, galvanized steel for outside plant cable. Used for the installation of fiber optic communication lines either underground, overhead, through conduit or through enclosures. They will fit single cables or cable bundles, are easily installed on the cable and are reusable.

E=Eye Length  
M=Mesh Length at Nominal Diameter

Part No.	Description	Cable Diameter Range		Approximate Breaking Strength		E		M		D	
		(in)	(mm)	(lb)	(N)	(in)	(mm)	(in)	(mm)	(in)	(mm)
08643505	033-29-1000	.10-.22	3-6	1,000	4,448	5-1/2"	140	9"	229	.8"	20
08643512	033-29-1001	.21-.35	5-9	1,500	6,672	5-1/2"	140	14"	356	.8"	20
08643514	033-29-1002	.32-.48	8-12	2,200	9,786	6"	152	18"	457	.9"	23
08643518	033-29-1003	.42-.61	11-15	2,800	12,454	6"	152	21"	533	.9"	23
08643524	033-29-1004	.53-.74	13-19	3,300	14,678	6-1/2"	165	24"	610	1.3"	23
08643529	033-29-1005	.64-.87	16-22	4,700	20,906	6-1/2"	165	27"	686	1.3"	23



## FIBER OPTIC PULLING CABLE GRIP



Dual weave design from galvanized wire rope. Used for the installation of fiber optic cables for either overhead or underground applications. Made of Galvanized Steel.



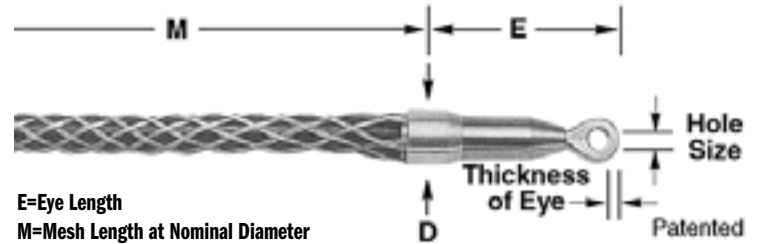
Slingco Part No.	Range		Lattice Length		Overall Length		Approximate Breaking Load (lb)
	(in)	(mm)	(in)	(mm)	(in)	(mm)	
ZCS2008	0.11-0.23	2.5-5.6	11"	265	18"	455	950
ZCS2009	0.21-0.36	5.3-9.2	15"	370	22"	560	1,650
ZCS2010	0.32-0.49	8.1-12.5	19"	470	17"	690	2,200
ZCS2011	0.42-0.62	10.7-5.8	20"	515	29"	735	2,750
ZCS2012	0.53-0.75	13.5-19.1	23"	595	32"	815	3,700
ZCS2013	0.64-0.88	16.3-22.4	25"	645	34"	865	4,250
ZCS2014	0.75-1.00	19.1-25.5	27"	720	37"	940	4,250

## FIBER OPTIC GRIP - SWIVEL EYE

Double/Single weave mesh, galvanized steel for outside plant cable. Used for the installation of fiber optic communication lines either underground, overhead, through conduit or through enclosures. They will fit single cables or cable bundles, are easily installed on the cable and are reusable.



Part No.	Description	Cable Diameter Range		Approximate Breaking Strength		E		M		D		Hole Size		Thickness of Eye	
		(in)	(mm)	(lb)	(N)	(in)	(mm)	(in)	(mm)	(in)	(mm)	(in)	(mm)	(in)	(mm)
08643612	033-29-1008	.21-.35	5-9	1,500	6,672	4"	83	14"	356	.9"	23	.236"	6	.496"	13
08643614	033-29-1009	.32-.48	8-12	2,200	9,786	4"	95	18"	457	.9"	23	.236"	6	.496"	13
08643618	033-29-1010	.42-.61	11-15	2,800	12,455	4"	108	21"	533	.9"	23	.245"	6	.505"	13
08643624	033-29-1011	.53-.74	13-19	3,300	14,457	4-1/2"	127	24"	610	1.3"	33	.241"	6	.5"	13
08643629	033-29-1012	.64-.87	16-22	4,700	20,907	4-1/2"	146	27"	686	1.3"	33	.234"	6	.502"	13

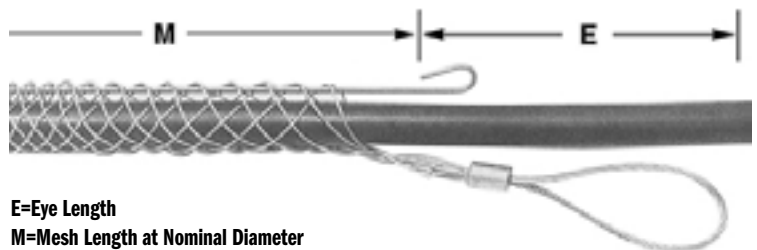


## FIBER OPTIC GRIP - SPLIT MESH, ROD CLOSING, SINGLE WEAVE

Single weave mesh, galvanized steel for outside plant cable. Used for the installation of fiber optic communication lines either underground, overhead, through conduit or through enclosures. They will fit single cables or cable bundles, are easily installed on the cable and are reusable.



Part No.	Description	Cable Diameter Range		Approximate Breaking Strength		E		M	
		(in)	(mm)	(lb)	(N)	(in)	(mm)	(in)	(mm)
08643713	033-29-1015	.25-.37	6-9	300	1,334	3"	76	4.7"	119
08643716	033-29-1016	.38-.49	10-12	800	3,558	3"	76	5"	127
08643722	033-29-1017	.50-.61	13-15	800	3,558	3"	76	7-1/2"	191
08643728	033-29-1018	.62-.74	16-19	1,200	5,338	3"	76	8"	203



## SINGLE WEAVE, SINGLE EYE, LIGHT DUTY

### SERIES 00661

**DCD** Design & Manufacturing Ltd.

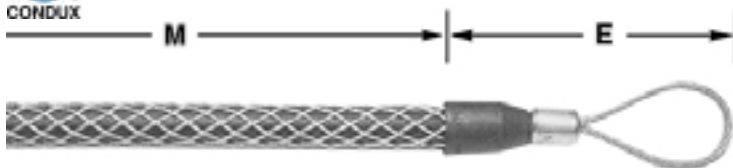
These grips offer a flexible eye with single weave galvanized wire construction for light duty applications, pulling single or grouped cable, where a small profile is needed. A standard kit is also available in a pouch.



Part No.	Size Range	Approximate Mesh Length	Approximate Breaking Strength	Weight
00661-004	0.15" to 0.24"	6-1/2"	400 lb	0.01 lb
00661-006	0.25" to 0.37"	6-1/2"	460 lb	0.01 lb
00661-010	0.38" to 0.49"	7-1/2"	860 lb	0.03 lb
00661-013	0.50" to 0.62"	9"	1,250 lb	0.06 lb
00661-016	0.63" to 0.74"	12"	1,790 lb	0.09 lb
00661-019	0.75" to 0.99"	12"	2,580 lb	0.13 lb
00661-025	1.00" to 1.24"	12-1/2"	4,090 lb	0.22 lb
00661-JGK	Kit with pouch that includes one of all above parts except 00661-004			0.90 lb



## JUNIOR GRIP



Junior Pulling Grips feature a strong galvanized steel, single weave mesh. A flexible eye easily attaches to a pulling line, snake or fish tape. Designed to pull building wire, Junior grips are safe tools to use in pulling wire at low tension through conduit during electrical construction

E=Eye Length  
M=Mesh Length at Nominal Diameter

Part No.	Description	Cable Diameter Range		Approximate Breaking Strength		E		M	
		(in)	(mm)	(lb)	(N)	(in)	(mm)	(in)	(mm)
08643210	033-05-011	.19-.24	5-6	400	1,779	3-1/4"	83	4-1/4"	108
*08643213	033-05-001	.25-.36	6-9	450	2,002	3-1/4"	83	4-1/4"	108
*08643216	033-05-002	.37-.49	9-12	900	4,003	3-1/4"	95	7"	178
*08643222	033-05-003	.50-.61	13-15	1,300	5,782	4-1/4"	108	8-1/2"	216
*08643228	033-05-004	.62-.74	16-19	1,950	8,674	5"	127	10"	254
*08643231	033-05-005	.75-.99	19-25	2,800	12,454	5-3/4"	146	10"	254
*08643237	033-05-006	1.00-1.24	25-31	3,900	17,347	6-1/2"	165	11-1/2"	292



## JUNIOR GRIP KIT

Contains items indicated with (\*) in Junior Grip chart above

**Part Number:** 08643200

The Junior Grip Kit covers a cable O.D. range of 0.25" - 1.24" (6mm - 31mm)



## LIGHT DUTY GRIP - SHORT

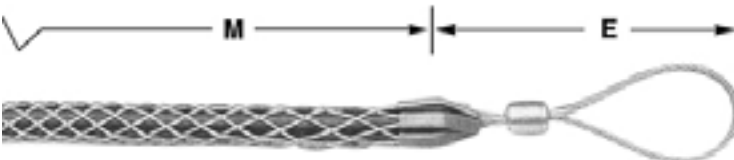


E=Eye Length  
M=Mesh Length at Nominal Diameter

Light Duty Pulling Grips are made of galvanized steel in a single weave construction. They feature a flexible eye for easy attachment to a pulling line. Light duty grips are used in general underground electrical construction where pulling tensions are low. They are easy tools to use in wiring industrial plants and commercial buildings.

Part No.	Description	Cable Diameter Range		Approximate Breaking Strength		E		M	
		(in)	(mm)	(lb)	(N)	(in)	(mm)	(in)	(mm)
08643022	033-03-001	.50-.62	13-15	2,800	12,454	5"	127	11"	279
08643028	033-03-002	.63-.74	16-19	2,800	12,454	5"	127	11"	279
08643031	033-03-003	.75-.99	19-25	4,000	17,792	6"	152	12"	305
08643037	033-03-004	1.00-1.24	25-31	5,300	23,574	7"	178	13"	330
08643043	033-03-005	1.25-1.49	32-38	5,300	23,574	7"	178	14"	356
08643049	033-03-006	1.50-1.75	38-44	6,800	30,246	8"	203	15"	381
08643052	033-03-007	1.75-1.99	44-51	8,500	37,808	8"	229	17"	432
08643055	033-03-008	2.00-2.49	51-63	8,500	37,808	9"	229	18"	457

## LIGHT DUTY GRIP - STANDARD

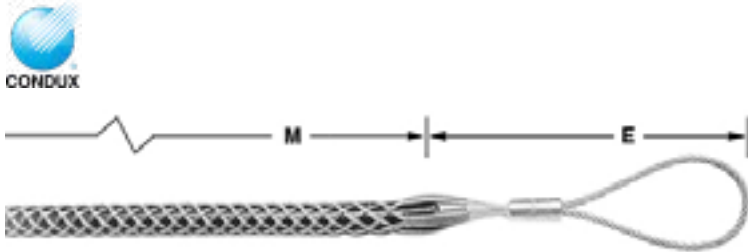


E=Eye Length  
M=Mesh Length at Nominal Diameter

Light Duty Pulling Grips are made of galvanized steel in a single weave construction. They feature a flexible eye for easy attachment to a pulling line. Light duty grips are used in general underground electrical construction where pulling tensions are low. They are easy tools to use in wiring industrial plants and commercial buildings.

Part No.	Description	Cable Diameter Range		Approximate Breaking Strength		E		M	
		(in)	(mm)	(lb)	(N)	(in)	(mm)	(in)	(mm)
08643122	033-03-010	.50-.61	13-15	2,800	12,455	5"	127	16"	406
08643128	033-03-011	.62-.74	16-19	2,800	12,455	5"	127	16"	406
08643131	033-03-012	.75-.99	19-25	4,000	17,792	6"	152	20"	508
08643137	033-03-013	1.00-1.24	25-31	6,800	30,248	7"	178	20"	508
08643143	033-03-015	1.25-1.49	32-38	6,800	30,248	7"	178	21"	533
08643149	033-03-016	1.50-1.99	38-51	6,800	30,248	8"	203	23"	584
08643155	033-03-017	2.00-2.49	51-63	8,500	37,810	9"	229	25"	635
08643258	033-03-018	2.50-2.99	64-76	10,600	47,151	9"	229	27"	686
08643161	033-03-019	3.00-3.49	76-89	14,700	65,389	10"	254	30"	762
08643164	033-03-029	3.50-3.99	89-101	14,700	65,389	10"	254	32"	813

## T-TYPE GRIPS - SHORT, FLEXIBLE EYE

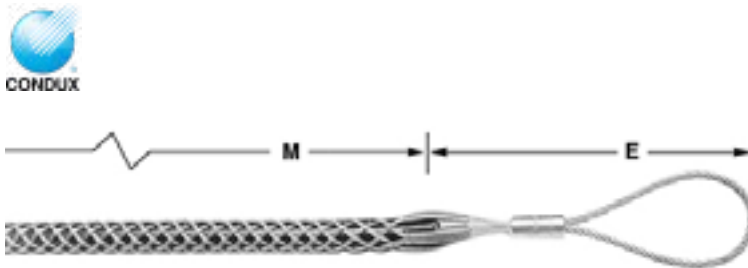


E=Eye Length  
M=Mesh Length at Nominal Diameter

Flexible T-Type Pulling Grips are made of high strength galvanized steel strand. They feature double weave mesh for positive holding power in medium to heavy pulling jobs. The grip eye will easily attach to a swivel. They are used for the installation of underground power cables, communication lines and service lines into factories, construction projects and for general underground electrical construction. Available in two mesh lengths, short for medium pulls, and standard for general purpose pulling.

Part No.	Description	Cable Diameter Range		Approximate Breaking Strength		E		M	
		(in)	(mm)	(lb)	(N)	(in)	(mm)	(in)	(mm)
08642222	033-04-1082	.50-.62	13-16	4,500	20,017	8"	203	21"	533
08642228	033-04-1083	.63-.74	16-19	5,600	24,910	8"	203	24"	610
08642231	033-04-1084	.75-.74	19-25	6,800	30,248	9"	229	24"	610
08642237	033-04-1085	1.00-1.49	25-38	9,600	42,703	9"	229	24"	610
08642249	033-04-1086	1.50-1.99	38-51	16,400	72,951	11"	279	24"	610
08642255	033-04-1087	2.00-2.49	51-63	18,500	82,292	12"	305	24"	610
08642258	033-04-1088	2.50-2.99	64-76	24,500	108,981	12"	305	24"	610
08642261	033-04-1089	3.00-3.49	76-89	24,500	108,981	14"	356	24"	610
08642264	033-04-1090	3.50-3.99	89-101	31,000	137,895	14"	356	26"	660

## T-TYPE GRIPS - STANDARD, FLEXIBLE EYE



E=Eye Length  
M=Mesh Length at Nominal Diameter

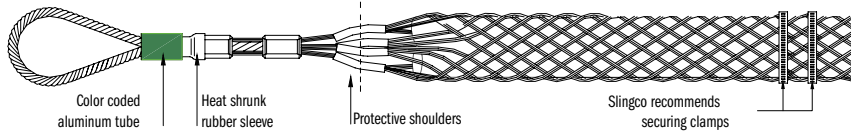
Part No.	Description	Cable Diameter Range		Approximate Breaking Strength		E		M	
		(in)	(mm)	(lb)	(N)	(in)	(mm)	(in)	(mm)
08642331	033-04-1091	.75-.99	19-25	6,800	30,248	9"	229	36"	914
08642337	033-04-1092	1.00-1.49	25-38	9,600	42,703	9"	229	36"	914
08642349	033-04-1093	1.50-1.99	38-51	16,400	72,951	11"	279	36"	914
08642355	033-04-1094	2.00-2.49	51-63	18,500	82,292	12"	305	36"	914
08642358	033-04-1095	2.50-2.99	64-76	24,500	108,981	12"	305	36"	914
08642361	033-04-1096	3.00-3.49	76-89	24,500	108,981	14"	356	36"	914
08642364	033-04-1097	3.50-3.99	89-101	31,000	137,895	14"	356	49"	1,016



## A TYPE - HIGH STRENGTH CABLE GRIP



The strongest grip we produce; can be used for metal wire and synthetic rope pulls. Perfect for overhead transmission and distribution line pulling or any applications with load ratings, e.g. gas, electric railroad, rigging lines and construction pulls. When pulling synthetic rope use Slingco Feed Tube (see below) to make rope insertion a breeze. To avoid the effects of torsion a line pulling swivel that rotates under load should be used. Galvanized Steel and color coded for ease of identification.



Slingco Part No.	Color Code	Rope Diameter Range		Conductor Diameter Range		Overall Length		Lattice Length		Approx. Break Load (lb)
		(in)	(mm)	(in)	(mm)	(in)	(mm)	(in)	(mm)	
ZCS1799	Black	0.25-0.65	6-16	0.19-0.40	5-10	38"	965	28"	710	7,000
ZCS3020	Purple	0.30-0.40	7.5-10	0.25-0.40	6-10	42"	1,067	30"	760	10,000
ZCS1800	Dark Green	0.50-0.90	13-23	0.38-0.63	9.7-16	51"	1,300	37"	940	14,000
ZCS3522	Grey	0.44-0.90	11-23	0.44-0.63	11-16	110"	2,800	97"	2,470	20,000
ZCS1801	Red	0.75-1.10	19-28	0.63-0.88	16-22	74"	1,880	58"	1,473	20,000
ZCS1802	Blue	1.00-1.50	25-38	0.88-1.12	22-29	80"	2,032	61"	1,549	30,700
ZCS1803	Yellow	1.25-1.70	32-43	1.13-1.38	29-35	112"	2,845	90"	2,229	47,000
ZCS1804	Aluminum	1.50-2.10	38-53	1.38-1.90	35-50	119"	3,020	92"	2,336	67,000
ZCS6712	-	-	-	2.00-2.60	50.8-66.0	109.25"	2775	100"	2,557	70,528
ZCS7852	-	-	-	2.50-3.00	63.5-76.2	109.25"	2775	100"	2,557	70,528

## FEED TUBE



Due to the tight construction of the A Type cable grip, we recommend using the Slingco Feed Tube when inserting cable or rope into the grips. For ease of use, our feed tube are color-coded to match the A Type Cable Grip.



Slingco Part No.	Color Code	Tube to Fit Rope Diameter		Feed Tube Length		Matches Slingco Cable Grip Part No.
		(in)	(mm)	(in)	(mm)	
FTU1890	Black	0.25-0.50	6-16	28"	713	ZCS1799, ZCS3020
FTU1891	Dark Green	0.50-0.75	13-23	40"	1,018	ZCS1800, ZCS3522
FTU1892	Red	0.75-1.10	19-28	52"	1,324	ZCS1801
FTU1893	Blue	1.00-1.50	25-38	67"	1,706	ZCS1802
FTU1894	Yellow	1.25-1.70	32-43	83"	2,113	ZCS1803
FTU1895	Aluminum	1.50-2.10	38-53	96"	2,444	ZCS1804

## DUAL WIRE, DOUBLE WEAVE, HIGH STRENGTH, SHOULDERS

### SERIES 00695

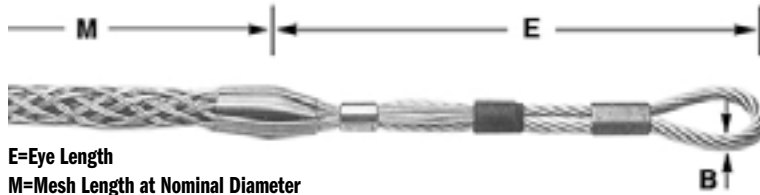
**DCD** Design & Manufacturing Ltd.

These extra high strength grips feature a dual wire, double woven construction. This type of grip should be used for heavy duty applications such as overhead transmission wire. The color-coded grips are particularly suited to bare conductor and synthetic rope applications.



Part No.	Color Code	Conductor Size Range	Rope Size Range	Approximate Mesh Length	Head Length	Approximate Breaking Strength	Weight
00695-019	Black	0.19" to 0.37"	0.25" to 0.65"	24"	10"	6,800 lb	0.61 lb
00695-038	Dark Green	0.38" to 0.62"	0.50" to 0.90"	36"	12"	14,500 lb	1.56 lb
00695-063	Red	0.63" to 0.87"	0.75" to 1.10"	48"	13"	21,500 lb	2.53 lb
00695-088	Dark Blue	0.88" to 1.12"	1.00" to 1.50"	60"	15"	32,000 lb	6.14 lb
00695-113	Yellow	1.13" to 1.37"	1.25" to 1.70"	76"	18"	48,000 lb	13.06 lb
00695-138	Aluminum	1.38" to 1.90"	1.50" to 2.10"	89"	24"	68,000 lb	19.87 lb

## DUA-PULL® GRIPS\*\*



E=Eye Length  
M=Mesh Length at Nominal Diameter

Dua-Pull Pulling Grips are the highest strength pulling grips manufactured for overhead transmission line stringing applications. They are most commonly used for attaching pulling lines to conductors, conductors to running boards and double socking for conductor-to-conductor connections. They accommodate ACSR, ACAR, all aluminum and copper conductors, ground wires messenger strands and synthetic ropes not provided by any other grip.

Part No.	Description	Color	Cable Diameter Range		Rope Diameter Range		Approximate Breaking Strength		E		M		B	
			(in)	(mm)	(in)	(mm)	(lb)	(N)	(in)	(mm)	(in)	(mm)	(in)	(mm)
08641710	033-27-1037	Black	.19-.37	5-9	.25-.65	6-17	6,500	28,913	10"	254	24"	610	.220"	6
08641716	033-27-1038	Dark Green	.38-.62	10-16	.50-.90	13-23	14,000	62,275	12"	305	36"	914	.375"	10
08641728	033-27-1039	Red	.63-.87	16-22	.75-1.10	19-28	20,000	88,964	13"	330	48"	1,219	.437"	11
08641734	033-27-1040	Dark Blue	.88-1.12	22-28	1.00-1.50	25-38	30,600	136,116	15"	381	60"	1,524	.500"	13
08641740	033-27-1041	Yellow	1.13-1.37	29-35	1.25-1.70	32-43	46,800	208,177	18"	457	76"	1,930	.625"	16
08641746	033-27-1042	Aluminum	1.38-1.90	35-48	1.50-2.10	38-53	66,500	295,807	24"	610	89"	2,261	.750"	19

\*For rope, select smallest size grip which meets required work load. \*\*Dua-Pull is a registered trademark of Kellems.

## MU TYPE - HIGH STRENGTH CABLE GRIP



This grip's triple weave construction is ideal for heavy loads. MU cable grips are color coded for ease of identification. Perfect for stringing overhead transmission and distribution lines and heavy-load pulls of any kind. Use with bare or insulated cable, conductor or wire. The flexible eye connects with Slingco line pulling swivels for trouble free pulling applications. Made of Galvanized Steel.



Slingco Part No.	Color Code	Range		Lattice Length		Overall Length	
		(in)	(mm)	(in)	(mm)	(in)	(mm)
ZCS1710	Dark Green	0.25-0.50	6-12	31"	787	7,000	3,170
ZCS1711	Brown	0.50-0.75	12-19	45"	1,143	10,500	4,760
ZCS1712	Light Blue	0.75-1.00	19-25	43"	1,092	14,100	6,395
ZCS1713	Gold	1.00-1.25	25-32	65"	1,651	25,000	11,340
ZCS1714	Black	1.25-1.50	32-38	59"	1,499	31,000	14,065
ZCS1715	Red	1.50-1.75	38-44	82"	2,083	31,000	14,065
ZCS1716	Dark Blue	1.75-2.25	44-57	82"	2,083	49,000	22,230
ZCS1750	Yellow	2.00-2.50	50-63	72"	1,829	49,000	22,230
ZCS1751	Orange	2.50-3.00	63-76	72"	1,829	49,000	22,230
ZCS1752	Aluminum	3.00-3.50	76-89	72"	1,829	49,000	22,230
ZCS1753	Light Green	3.50-4.00	89-102	72"	1,930	49,000	22,230

## MULTIPLE STRENGTH GRIP - FLEXIBLE EYE



E=Eye Length  
M=Mesh Length at Nominal Diameter

Multiple Strength Pulling Grips are designed for pulling ACSR, aluminum or copper bare conductor, ground wires, messenger strands, wire rope and insulated cables. They are ideal for overhead transmission and distribution line stringing where moderate loading is anticipated. They are economical tools used for attaching conductors to pulling lines and double socking for conductor-to-conductor connections.

Part No.	Description	Color	Cable Diameter Range		Approximate Breaking Strength		E		M		Cable Diameter A	
			(in)	(mm)	(lb)	(N)	(in)	(mm)	(in)	(mm)	(in)	(mm)
08641913	033-02-044	Dark Green	.25-.49	6-12	6,800	30,248	9"	229	26"	660	1/4"	6
08641922	033-02-046	Brown	.50-.74	12-19	10,000	44,482	9"	229	32"	813	5/16"	8
08641931	033-02-048	Light Blue	.75-.99	19-25	14,400	64,054	11"	279	41"	1,041	3/8"	10
08641937	033-02-050	Gold	1.00-1.24	25-31	24,600	109,426	12"	305	52"	1,321	1/2"	13
08641943	033-02-052	Black	1.25-1.49	32-38	30,600	136,116	12"	305	56"	1,422	1/2"	13
08641949	033-02-054	Red	1.50-1.74	38-44	30,600	136,116	12"	305	60"	1,524	1/2"	13
08641952	033-02-056	Dark Blue	1.75-2.24	44-57	48,000	213,515	18"	457	70"	1,778	5/8"	16
08641955	033-02-1078	Yellow	2.00-2.49	51-63	48,000	213,515	18"	457	50"	1,270	5/8"	16
08641958	033-02-1079	Orange	2.50-2.99	64-76	48,000	213,515	18"	457	52"	1,321	5/8"	16
08641961	033-02-1080	Aluminum	3.00-3.49	76-89	48,000	213,515	18"	457	50"	1,270	5/8"	16
08641964	033-02-1081	Light Green	3.50-3.99	89-101	48,000	213,515	18"	457	53"	1,346	5/8"	16

## TRIPLE WEAVE, SINGLE EYE SHOULDERS SERIES 00681

**DCD** Design & Manufacturing Ltd.

These grips offer a color-coded, flexible eye with shoulders and triple weave galvanized wire construction. The shoulders help to protect the leading edge of the cable or ducting and this type should be used for more demanding, heavy duty applications.



Part No.	Color Code	Size Range	Approximate Mesh Length	Approximate Breaking Strength	Weight
00681-006	Dark Green	0.25" to 0.49"	18"	6,500 lb	0.41 lb
00681-012	Brown	0.50" to 0.74"	33"	10,400 lb	0.79 lb
00681-019	Light Blue	0.75" to 0.99"	41"	16,000 lb	1.47 lb
00681-025	Gold	1.00" to 1.24"	51"	25,400 lb	3.46 lb
00681-032	Black	1.25" to 1.24"	60"	31,700 lb	4.11 lb
00681-038	Red	1.50" to 1.99"	75"	32,000 lb	4.81 lb
00681-048	Yellow	2.00" to 2.49"	75"	44,600 lb	8.12 lb

## ST TYPE - SINGLE EYE DOUBLE WEAVE CABLE GRIP

**slingco** This Slingco grip features a double weave construction for medium to heavy pulling applications in underground installations.



Slingco Part No.	Range		Lattice Length		Approximate Breaking Load (lb)
	(in)	(mm)	(in)	(mm)	
<b>Short Length - Galvanized Steel</b>					
ZCS2511	0.50-0.62	13-16	21"	534	4,500
ZCS2512	0.62-0.75	16-19	24"	610	5,600
ZCS2513	0.75-1.00	19-25	24"	610	6,800
ZCS2514	1.00-1.50	25-38	24"	610	9,600
ZCS2515	1.50-2.00	38-50	24"	610	16,400
ZCS2516	2.00-2.50	50-63	24"	610	18,500
ZCS2517	2.50-3.00"	63-76	24"	610	24,500
ZCS2518	3.00-3.50	76-89	24"	610	24,500
ZCS2519	3.40-4.00	89-102	26"	660	31,000
<b>Longer Length - Galvanized Steel</b>					
ZCS2520	0.75-1.00	19-25	36"	914	6,800
ZCS2521	1.00-1.50	25-38	36"	914	9,600
ZCS2522	1.50-2.00	38-50	36"	914	16,400
ZCS2523	2.00-2.50	50-63	36"	914	18,500
ZCS2524	2.50-3.00	63-76	36"	914	24,500
ZCS2777	3.00-3.50	76-89	36"	914	24,500
ZCS2778	3.40-4.00	89-102	40"	1,010	31,000



## DOUBLE WEAVE, SINGLE EYE, SHOULDERS

### SERIES 00680

**DCD** Design & Manufacturing Ltd.

These grips offer a flexible eye and double weave galvanized wire construction. The shoulders offer added protection to the utility being pulled in as well as protecting the leading wire strands.



Part No.	Size Range	Approximate Mesh Length	Approximate Breaking Strength	Weight
00680-025	0.25" to 0.49"	18"	4,800 lb	0.25 lb
00680-038	0.50" to 0.74"	18"	5,800 lb	0.38 lb
00680-050	0.75" to 1.12"	24"	6,700 lb	0.61 lb
00680-100	1.13" to 1.49"	24"	10,000 lb	0.87 lb
00680-125	1.50" to 1.99"	24"	16,400 lb	1.31 lb
00680-200	2.00" to 2.49"	24"	18,500 lb	1.76 lb
00680-250	2.50" to 2.99"	36"	24,500 lb	3.32 lb
00680-300	3.00" to 3.74"	36"	24,500 lb	3.33 lb
00680-350	3.75" to 4.24"	48"	31,000 lb	6.56 lb
00680-400	4.25" to 4.99"	48"	31,000 lb	7.64 lb

## K-TYPE GRIPS - STANDARD, FORGED EYE



E=Eye Length  
M=Mesh Length at Nominal Diameter



Part No.	Description	Cable Diameter Range		Approximate Breaking Strength		E		M		B		C	
		(in)	(mm)	(lb)	(N)	(in)	(mm)	(in)	(mm)	(in)	(mm)	(in)	(mm)
08642122	033-01-011	.50-.62	13-16	5,600	24,910	5"	127	16"	406	9/32"	7	1/2"	13
08642128	033-01-012	.63-.74	16-19	6,800	30,248	5"	127	16"	406	9/32"	7	1/2"	13
08642131	033-01-024	.75-.99	19-25	9,600	42,703	6"	152	32"	813	1/2"	13	9/16"	14
08642137	033-01-025	1.00-1.49	25-38	16,400	72,951	7"	178	33"	838	1/2"	13	11/16"	17
08642149	033-01-026	1.50-1.99	38-51	16,400	72,951	7"	178	34"	864	5/8"	13	11/16"	17
08642155	033-01-027	2.00-2.49	51-63	27,200	120,992	9"	229	36"	914	21/32"	16	7/8"	22
08642158	033-01-028	2.50-2.99	64-76	33,000	146,791	10"	254	38"	965	21/32"	17	1"	25
08642161	033-01-029	3.00-3.49	76-89	41,000	182,377	10"	254	39"	991	21/32"	17	1"	25
08642164	033-01-030	3.50-3.99	89-101	48,000	213,515	10"	254	41"	1,041	21/32"	17	1"	25
08642167	033-01-031	4.00-4.49	102-114	48,000	213,515	10"	254	42"	1,067	21/32"	17	1"	25
08642170	033-01-039	4.50-4.99	114-127	48,000	213,515	10"	254	58"	1,473	21/32"	17	1"	25
08642173	033-01-047	5.00-5.99	127-152	48,000	213,515	10"	254	60"	1,524	21/32"	17	1"	25
08642176	033-01-045	6.00-6.99	152-178	48,000	213,515	10"	254	66"	1,676	21/32"	17	1"	25

## SE TYPE - SINGLE EYE DOUBLE WEAVE CABLE GRIP



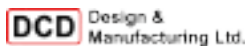
Ideal for pulling light to medium loads; typical application - 'standard pull' single or group of cables, where additional support is unnecessary, or if used in conjunction with other cable grips.



Slingco Part No.	Range		Lattice Weave	Lattice Length		Overall Length		Approximate Breaking Load (lb)
	(in)	(mm)		(in)	(mm)	(in)	(mm)	
<b>Single Eye Standard Grip - Galvanized</b>								
ZCS0320	0.25"-0.50"	10-13	Single	9"	230	12"	305	1,680
ZCS0320	0.50-0.75	13-19	Single	14"	355	17"	430	2,240
ZCS0321	0.75-1.00	19-25	Single	16"	405	20"	510	5,600
ZCS0322	1.00-1.50	25-38	Single	18"	455	24"	610	7,840
ZCS0323	1.50-2.00	38-50	Double	21"	535	29"	735	11,200
ZCS0324	2.00-2.50	50-63	Double	24"	610	34"	865	11,200
ZCS0325	2.50-3.00	63-89	Double	27"	685	39"	990	13,440
ZCS0326	3.50-4.00	89-115	Double	27"	685	39"	990	15,680
ZCS0821	4.50-5.50	115-140	Double	27"	685	39"	990	15,680
<b>Single Eye Standard Grip - 316 Stainless Steel</b>								
ZCS1380	0.25-0.50	10-13	Single	9"	230	12"	305	1,344
ZCS1523	0.50-0.75	13-19	Single	14"	355	17"	430	1,792
ZCS1373	0.75-1.00	19-25	Single	16"	405	20"	510	4,480
ZCS1952	1.00-1.50	25-38	Single	18"	455	24"	610	6,272
ZCS1381	1.50-2.00	38-50	Double	21"	535	29"	735	8,960
ZCS1977	2.00-2.50	50-63	Double	24"	610	34"	865	8,960
ZCS1979	2.50-3.50	63-89	Double	27"	685	39"	990	10,752
ZCS1980	3.50-4.50	89-115	Double	27"	685	39"	990	12,544
ZCS1981	4.50-5.50	115-140	Double	27"	685	39"	990	12,544

## DOUBLE WEAVE, SINGLE EYE

### SERIES 00670/00671



These grips offer a flexible eye and double weave galvanized wire construction for regular load pulls the galvanized steel braid offers durability for underground installations and other more.



Part No.	Size Range	Approximate Mesh Length	Approximate Breaking Strength	Weight
00670-025	0.24" to 0.37"	18"	4,250 lb	0.21 lb
00670-038	0.38" to 0.74"	18"	5,000 lb	0.34 lb
00670-050	0.75" to 1.12"	20"	6,600 lb	0.47 lb
00670-100	1.13" to 1.49"	21"	10,000 lb	0.69 lb
00670-125	1.50" to 1.99"	24"	13,800 lb	1.43 lb
00670-200	2.00" to 2.49"	24"	14,200 lb	1.47 lb
00670-250	2.50" to 2.99"	28"	17,500 lb	1.90 lb
00671-080	3.00" to 3.74"	30"	18,000 lb	2.59 lb
00671-095	3.75" to 4.24"	32"	26,500 lb	3.52 lb

## OS TYPE-OFFSET EYE CABLE GRIP



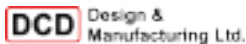
Similar to the SE Type single eye cable grip, but for when offset positioning is required. Excellent for pulling slack out of lines that have been pulled. May also be used for removing underground cables when end of cable is available.



Slingco Part No.	Range		Lattice Weave	Lattice Length		Overall Length		Approximate Breaking Load (lb)
	(in)	(mm)		(in)	(mm)	(in)	(mm)	
<b>Offset Eye Standard Grip - Galvanized</b>								
ZCS1860	0.25-0.50	6-13	Single	9"	230	12"	305	1,680
ZCS1861	0.50-.075	13-19	Single	14"	355	17"	430	2,240
ZCS1862	0.75-1.00	19-25	Single	16"	405	20"	510	5,600
ZCS1863	1.00-1.50	25-38	Single	18"	455	24"	610	7,840
ZCS1864	1.50-2.00	38-50	Double	21"	535	29"	735	11,200
ZCS1865	2.00-2.50	50-63	Double	24"	610	34"	865	11,200
ZCS1866	2.50-3.50	63-89	Double	27"	685	39"	990	13,440
ZCS1867	3.50-4.50	89-115	Double	27"	685	39"	990	15,680
ZCS1974	4.50-5.50	115-140	Double	27"	685	39"	990	15,680
<b>Offset Eye Standard Grip - 316 Stainless Steel</b>								
ZCS1986	0.25-0.50	6-13	Single	9"	230	12"	305	1,344
ZCS1987	0.50-0.75	13-19	Single	14"	355	17"	430	1,792
ZCS1988	0.75-1.00	19-25	Single	16"	405	20"	510	4,480
ZCS1989	1.00-1.50	25-38	Single	18"	455	24"	610	6,272
ZCS1990	1.50-2.00	38-50	Double	21"	535	29"	735	8,960
ZCS1991	2.00-2.50	50-63	Double	24"	610	34"	865	8,960
ZCS1992	2.50-3.50	63-89	Double	27"	685	39"	990	10,752
ZCS1993	3.50-4.50	89-115	Double	27"	685	39"	990	12,544
ZCS1994	4.50-5.50	115-140	Double	27"	685	39"	990	12,544
ZCS3994	5.50-7.00	140-180	Double	24"	610	39"	990	4,500
ZCS4069	8.00-9.00	203-229	Double	59"	1,500	74"	1,880	20,000

## DOUBLE WEAVE, SINGLE EYE, SLACK GRIP, CLOSED MESH

### SERIES 00674/00675



These grips offer an offset, flexible eye and durable, double-weave galvanized wire construction for an offset pull arrangement or pulling at the mid-span of the cable. Use this style if the end is available and the grip can be mounted directly onto the cable, leaving the cable end free.



Part No.	Size Range	Approximate Mesh Length	Approximate Breaking Strength	Weight
00674-010	0.38" to 0.74"	14"	2,500 lb	0.45 lb
00674-020	0.75" to 1.12"	17"	3,000 lb	0.50 lb
00674-030	1.13" to 1.49"	18"	5,000 lb	0.75 lb
00674-040	1.50" to 1.99"	20"	10,000 lb	1.54 lb
00675-050	2.00" to 2.49"	20"	11,000 lb	1.53 lb
00675-065	2.50" to 2.99"	22"	12,000 lb	1.85 lb
00675-080	3.00" to 3.74"	24"	15,000 lb	2.02 lb
00675-095	3.75" to 4.24"	24"	15,000 lb	4.32 lb

## L TYPE-LACE UP CABLE GRIP

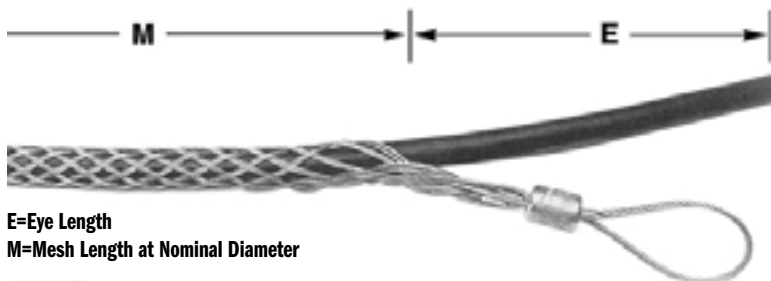


Ideal for pulling light to medium loads; the L-Type is fitted to the cable being pulled by stitching it together, like a football. Mainly used where a 'typical' cable grip can't be fitted over connector at the end of a cable. For use in pulling when the end is not accessible. The L-Type is wrapped around the cable, then closed with the lace provided.



Slingco Part No.	Range		Lattice Weave	Lattice Length		Overall Length		Approximate Breaking Load (lb)
	(in)	(mm)		(in)	(mm)	(in)	(mm)	
<b>Lace Up Standard Grip - Galvanized</b>								
ZCS1157	0.25-0.50	10-13	Single	9"	230	12"	305	1,680
ZCS0872	0.50-0.75	13-19	Single	14"	355	17"	430	2,240
ZCS0871	0.75-1.00	19-25	Single	16"	405	20"	510	5,600
ZCS0328	1.00-1.50	25-38	Single	18"	455	24"	610	7,840
ZCS0329	1.50-2.00	38-50	Double	21"	535	29"	735	11,200
ZCS0330	2.00-2.50	50-63	Double	24"	610	34"	865	11,200
ZCS0331	2.50-3.50	63-89	Double	27"	685	39"	990	13,440
ZCS0853	3.50-4.50	89-115	Double	27"	685	39"	990	15,680
ZCS1109	4.50-5.50	115-140	Double	27"	685	39"	990	15,680
ZCS4463	5.50-7.00	120-150	Triple	59"	1,500	102"	2,600	32,928
ZCS3270	7.90-8.70	200-220	Triple	78"	2,000	102"	2,600	71,680
<b>Lace Up Standard Grip - 316 Stainless Steel</b>								
ZCS1983	0.25-0.50	10-13	Single	9"	230	12"	305	1,344
ZCS1796	0.50-0.75	13-19	Single	14"	355	17"	430	1,792
ZCS1789	0.75-1.00	19-25	Single	16"	405	20"	510	4,480
ZCS1797	1.00-1.50	25-38	Single	18"	455	24"	610	6,272
ZCS1984	1.50-2.00	38-50	Double	21"	535	29"	735	8,690
ZCS2466	2.00-2.50	50-63	Double	24"	610	34"	865	8,690
ZCS0816	2.50-3.50	63-89	Double	27"	685	39"	990	10,752
ZCS5094	2.75-3.44	69-87	Multiple	55"	1,390	81"	2,063	40,000
ZCS1356	3.50-4.50	89-115	Double	27"	81	39"	990	12,544
ZCS2832	3.50-4.50	115-140	Triple	27"	39	39"	990	14,012
ZCS1355	4.50-5.50	115-140	Double	27"	39	39"	990	12,544
ZCS2833	4.50-5.50	115-140	Triple	27"	39	39"	990	16,128

## SLACK GRIP - CLOSED MESH



E=Eye Length  
M=Mesh Length at Nominal Diameter

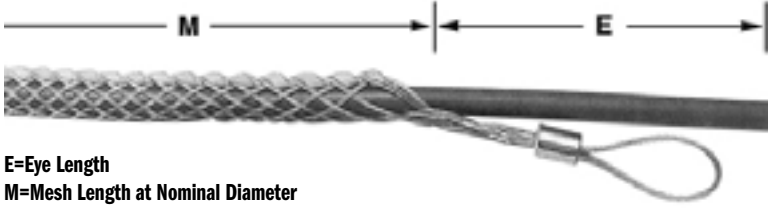
Slack Grip - Closed Mesh Pulling Grips are made of high strength galvanized steel in a double weave construction with a single eye. The closed mesh style grip is used when the cable end is accessible. All grips feature a single offset eye for easy attachment to a pulling line. They are used to pull in slack for final placement of underground cable after it has been pulled in. They are also used for removing cable.



Part No.	Description	Cable Diameter Range		Approximate Breaking Strength		E		M	
		(in)	(mm)	(lb)	(N)	(in)	(mm)	(in)	(mm)
08642531	033-08-003	.75-.99	19-25	2,600	11,565	7"	178	12"	305
08642537	033-08-004	1.00-1.24	25-31	4,000	17,793	8"	203	15"	381
08642543	003-08-005	1.25-1.49	32-38	5,400	24,020	8"	203	16"	406
08642549	033-08-006	1.50-1.74	38-44	6,600	29,358	8"	203	20"	508
08642552	033-08-007	1.75-1.99	44-51	10,000	44,482	10"	254	18"	457
08642555	033-08-008	2.00-2.49	51-63	11,000	48,930	10"	254	19"	483
08642558	033-08-009	2.50-2.99	63-76	11,000	48,930	10"	254	20"	508
08642561	033-08-010	3.00-3.49	76-89	14,500	64,499	12"	305	21"	533
08642564	033-08-011	3.50-3.99	89-101	14,500	64,499	12"	305	22"	559



## SLACK GRIP - SPLIT MESH, LACE CLOSING



E=Eye Length  
M=Mesh Length at Nominal Diameter

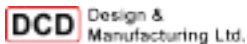
Slack Grip - Split Mesh, Lace Closing Pulling Grips are made of high strength galvanized steel in a double weave construction with a single eye. The split lace closing style grip is used when the cable end is not accessible. All grips feature a single offset eye for easy attachment to a pulling line. They are used to pull in slack for final placement of underground cable after it has been pulled in. They are also used for removing cable. Standard mesh lengths are generally used in restricted space for short pulls. Longer lengths are used for higher pulling loads where space is not restricted.



Part No.	Description	Cable Diameter Range		Approximate Breaking Strength		E		M	
		(in)	(mm)	(lb)	(N)	(in)	(mm)	(in)	(mm)
08642731	033-09-003	.75-.99	19-25	2,500	11,121	7"	178	12"	305
08642737	033-09-004	1.00-1.24	25-31	3,500	15,569	8"	203	15"	381
08642743	033-09-005	1.25-1.49	32-38	4,000	17,793	8"	203	16"	406
08642749	033-09-006	1.50-1.74	38-44	4,000	17,793	9"	229	17"	432
08642752	033-09-007	1.75-1.99	44-51	4,000	17,793	10"	254	18"	457
08641755	033-09-008	2.00-2.49	51-63	4,000	17,793	10"	254	19"	483
08642758	033-09-009	2.50-2.99	64-76	4,000	17,793	10"	254	20"	508
08642849	033-09-015	1.50-1.99	38-51	4,000	17,793	9"	229	25"	635
08642855	033-09-016	2.00-2.49	51-63	4,000	17,793	10"	254	26"	660
08642858	033-09-017	2.50-2.99	64-76	4,000	17,793	10"	254	29"	737
08642861	033-09-018	3.00-3.49	76-89	4,000	17,793	12"	305	32"	813
08642864	033-09-019	3.50-3.99	89-101	4,000	17,793	12"	305	35"	889

## DOUBLE WEAVE, SINGLE EYE, SLACK GRIP. SPLIT MESH (LACE-UP)

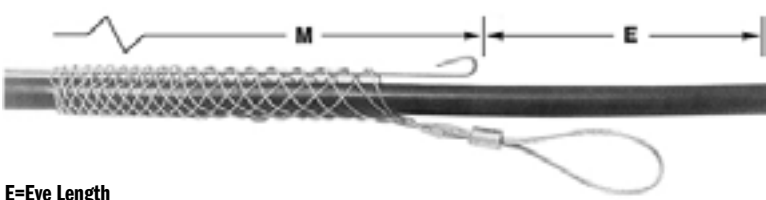
### SERIES 00678/00679



Similar to the 00674/00675 above, these grips offer an offset eye and double weave wire for offset or mid-span pulls. Use the laced, split-mesh grips if the end of the cable is not available or the grip cannot be mounted over the end fitting.

Part No.	Size Range	Approximate Mesh Length	Approximate Breaking Strength	Weight
00678-010	0.38" to 0.74"	14"	4,100 lb	0.40 lb
00678-020	0.75" to 1.12"	17"	4,970 lb	0.53 lb
00678-030	1.13" to 1.49"	18"	8,150 lb	0.81 lb
00678-040	1.50" to 1.99"	20"	12,100 lb	1.47 lb
00679-050	2.00" to 2.49"	21"	16,140 lb	1.74 lb
00679-065	2.50" to 2.99"	22"	16,140 lb	2.09 lb
00679-080	3.00" to 3.74"	24"	20,170 lb	2.69 lb
00679-095	3.75" to 4.24"	24"	23,400 lb	2.94 lb

## SLACK GRIP - SPLIT MESH, ROD CLOSING



Slack Grip - Split Mesh, Rod Closing Pulling Grips are made of high strength galvanized steel in a single weave construction with a single eye. The split rod closing style grip is used when the cable end is not accessible. All grips feature a single offset eye for easy attachment to a pulling line. They are used to pull in slack for final placement of underground cable after it has been pulled in. They are also used for removing cable.

E=Eye Length  
M=Mesh Length at Nominal Diameter



Part No.	Description	Cable Diameter Range		Approximate Breaking Strength		E		M	
		(in)	(mm)	(lb)	(N)	(in)	(mm)	(in)	(mm)
08642922	033-10-001	.50-.61	13-15	1,500	6,672	7"	178	6"	152
08642928	033-10-002	.62-.74	16-19	1,800	8,007	7"	178	8"	203
08642931	033-10-003	.75-.99	19-25	2,200	9,786	7"	178	10"	254
08642937	033-10-004	1.00-1.24	25-31	3,400	15,124	8"	203	12"	305
08642943	033-10-005	1.25-1.49	32-38	4,500	20,017	8"	203	14"	356
08642949	033-10-006	1.50-1.74	38-44	5,800	25,800	9"	229	15"	381
08642952	033-10-007	1.75-1.99	44-51	7,600	33,806	10"	254	16"	406
08642955	033-10-008	2.00-2.49	51-63	9,000	40,034	10"	254	19"	483
08652958	033-10-009	2.50-2.99	64-76	11,000	48,930	10"	254	20"	508
08642961	033-10-010	3.00-3.49	76-89	12,000	53,379	12"	305	21"	533
08642964	033-10-011	3.50-3.99	89-101	12,000	53,379	12"	305	24"	610



# CONDUX

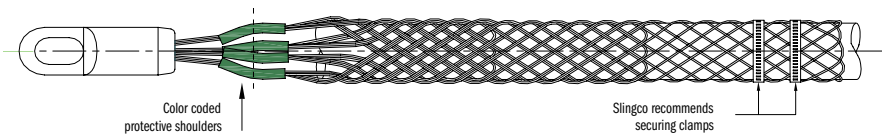
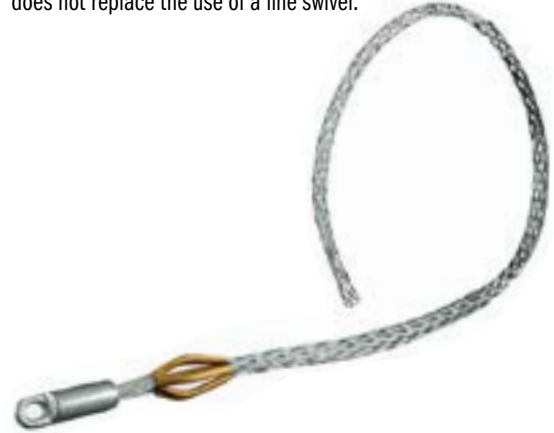
## R TYPE-ROTATING EYE MULTI-WEAVE CABLE GRIP



Slingco Part No.	Color Code	Range		Lattice Length		Approximate Breaking Load (lb)
		(in)	(mm)	(in)	(mm)	
ZCS2177	Dark Green	0.25-0.50	6-12	31"	787	7,000
ZCS2178	Brown	0.50-0.75	12-19	45"	1,143	10,500
ZCS2179	Light Blue	0.75-1.00	19-25	43"	1,092	14,100
ZCS2180	Gold	1.00-1.25	25-32	65"	1,651	25,000
ZCS2181	Black	1.25-1.50	32-38	59"	1,499	31,000
ZCS2182	Red	1.50-1.75	38-44	82"	2,083	31,000
ZCS2183	Dark Blue	1.75-2.25	44-57	82"	2,083	43,000
ZCS2779	Yellow	2.00-2.50	50-63	72"	1,829	43,000
ZCS2780	Orange	2.50-3.00	63-76	72"	1,829	43,000
ZCS2781	Aluminum	3.00-3.50	76-89	74"	1,880	43,000
ZCS2782	Light Green	3.50-4.00	89-102	76"	1,930	43,000

The rotating eye cable grip has a triple weave construction and is color coded for ease of identification. The steel forged revolving head is ideal for connecting to Slingco swivels.

**Warning:** The Slingco rotating eye does not revolve under load and does not replace the use of a line swivel.



## RT TYPE-ROTATING EYE DOUBLE WEAVE CABLE GRIP



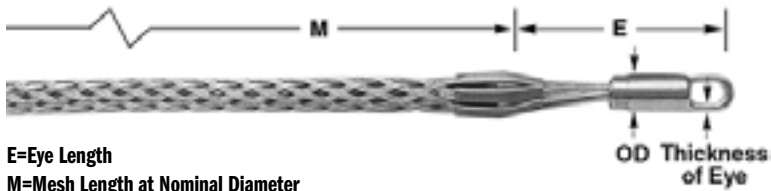
Slingco Part No.	Range		Lattice Length		Approximate Breaking Load (lb)
	(in)	(mm)	(in)	(mm)	
<b>Short Length - Galvanized Steel</b>					
ZCS2734	0.50-0.62	13-16	11"	280	5,600
ZCS2735	0.62-0.75	16-19	11"	280	6,800
ZCS2736	0.75-1.00	19-25	20"	508	6,800
ZCS2738	1.00-1.50	25-38	21"	533	12,800
ZCS2739	1.50-2.00	38-50	25"	635	15,400
ZCS2740	2.00-2.50	50-63	26"	660	27,200
ZCS2741	2.50-3.00	63-76	28"	711	33,000
ZCS2742	3.00-3.50	76-89	30"	762	41,000
ZCS2743	3.50-4.00	89-102	32"	813	43,000
ZCS2744	4.00-4.50	102-115	33"	838	43,000
<b>Standard - Longer Length - Galvanized Steel</b>					
ZCS2745	0.50-0.62	13-16	16"	406	5,600
ZCS2746	0.62-0.75	16-19	16"	406	6,800
ZCS2747	0.75-1.00	19-25	32"	812	9,600
ZCS2748	1.25-1.50	25-38	33"	838	16,400
ZCS2749	1.50-2.00	38-50	34"	863	16,400
ZCS2750	2.00-2.50	50-63	36"	914	27,300
ZCS2751	2.50-3.00	63-76	38"	965	33,000
ZCS2752	3.00-3.50	76-89	39"	990	41,000
ZCS2753	3.50-4.00	89-102	41"	1,041	43,000
ZCS2754	4.00-4.50	102-115	42"	1,066	43,000
ZCS2755	4.50-5.00	115-127	58"	1,473	43,000
ZCS2756	5.00-6.00	127-153	60"	1,524	43,000
ZCS2757	6.00-7.00	153-178	66"	1,676	43,000

Double weave construction for medium to heavy pulling applications in underground installations. Additionally its steel forged revolving head is ideal for connecting to Slingco swivels.

**Warning:** The Slingco rotating eye does not revolve under load and does not replace the use of a line swivel.



## MULTIPLE STRENGTH GRIP - ROTATING EYE\*



Multiple Strength Pulling Grips are designed for pulling ACSR, aluminum or copper bare conductor, ground wires, messenger strands, wire rope and insulated cables. They are ideal for overhead transmission and distribution line stringing where moderate loading is anticipated. They are economical tools used for attaching conductors to pulling lines and double socking for conductor-to-conductor connections.

Part No.	Description	Color	Cable Diameter Range		Approximate Breaking Strength		E		M		B		C	
			(in)	(mm)	(lb)	(N)	(in)	(mm)	(in)	(mm)	(in)	(mm)	(in)	(mm)
08641813	033-02-016	Dark Green	.25-.49	6-12	6,800	30,248	5"	127	26"	660	9/32"	7	1/2"	13
08641822	033-02-018	Brown	.50-.74	13-19	10,000	44,482	6"	152	32"	813	1.2"	13	9/16"	14
08641831	033-02-020	Light Blue	.75-.99	19-25	14,400	64,054	6"	152	41"	1,041	1/2"	13	9/16"	14
08641837	033-02-022	Gold	1.00-1.24	25-31	24,600	109,426	8"	203	52"	1,321	5/8"	13	11/16"	17
08641843	033-02-024	Black	1.25-1.49	32-38	30,600	136,116	8"	203	56"	1,422	21/32"	16	7/8"	22
08641849	033-02-026	Red	1.50-1.74	38-44	30,600	136,116	9"	229	60"	1,524	21/32"	17	1"	25
08641852	033-02-028	Dark Blue	1.75-2.24	44-57	48,000	213,515	10"	254	70"	1,778	21/32"	17	1"	25
08641855	033-02-066	Yellow	2.00-2.49	51-63	48,000	213,515	10"	254	50"	1,270	21/32"	17	1"	25
08641858	033-02-097	Orange	2.50-2.99	64-76	48,000	213,515	10"	254	52"	1,321	21/32"	17	1"	25
08641861	033-02-1030	Aluminum	3.00-3.49	76-89	48,000	213,515	10"	254	50"	1,270	21/32"	17	1"	25
08641864	033-02-1031	Light Green	3.50-3.99	89-101	48,000	213,515	10"	254	53"	1,346	21/32"	17	1"	25

\*Rotating Eye is not a swivel. It will not turn while under tension, but it can turn to relieve pulling torque when the tension is relaxed.

## K-TYPE GRIPS - SHORT, FORGED EYE



Flexible T-Type Pulling Grips are made of high strength galvanized steel strand. They feature double weave mesh for positive holding power in medium to heavy pulling jobs. The grip eye will easily attach to a swivel. They are used for the installation of underground power cables, communication lines and service lines into factories, construction projects and for general underground electrical construction. Available in two mesh lengths, short for medium pulls, and standard for general purpose pulling.

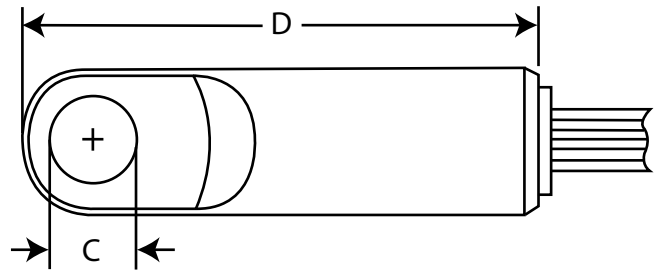
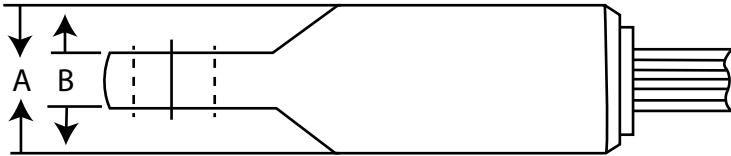
Part No.	Description	Cable Diameter Range		Approximate Breaking Strength		E		M		B		C	
		(in)	(mm)	(lb)	(N)	(in)	(mm)	(in)	(mm)	(in)	(mm)	(in)	(mm)
08642002	033-01-001	.50-.62	13-16	5,600	24,910	5"	127	11"	279	9/32"	7	1/2"	13
08642028	033-01-002	.63-.74	16-19	6,800	30,248	5"	127	11"	279	9/32"	7	1/2"	13
08642031	033-01-013	.75-.99	19-25	6,800	30,248	6"	152	20"	508	1/2"	13	9/16"	14
08642037	033-01-014	1.00-1.24	25-31	12,800	56,937	7"	178	20"	508	1/2"	13	11/16"	17
08642043	033-01-016	1.25-1.49	32-38	12,800	56,937	7"	178	21"	533	1/2"	13	11/16"	17
08642049	033-01-017	1.50-1.99	38-51	16,400	72,951	7"	178	25"	635	5/8"	13	11/16"	17
08642055	033-01-018	2.00-2.49	51-63	27,200	120,992	8"	203	26"	660	21/32"	16	7/8"	22
08642058	033-01-019	2.50-2.99	64-76	33,000	146,791	10"	254	28"	711	21/32"	17	1"	25
08642061	033-01-020	3.00-3.49	76-89	41,000	182,377	10"	254	30"	762	21/32"	17	1"	25
08642064	033-01-021	3.50-3.99	89-101	48,000	213,515	10"	254	32"	813	21/32"	17	1"	25
08642067	033-01-1017	4.00-4.49	102-114	48,000	213,515	10"	254	33"	838	21/32"	17	1"	25



## ROTARY HEAD GRIPS

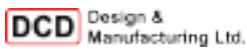
The following two grips have a rotary head that can be fitted to a DCD Line Swivel (00505 Series) for smooth rotation or linked to a shackle in the pulling string.

Please note that the rotating head does not replace the use of a line swivel. There are no bearings to allow rotation under load and severe damage may occur to the utility being installed if this product is used without the correct swivel. Select the appropriate swivel and safe working load based on your applied safety factors.



## TRIPLE WEAVE, ROTARY HEAD, SHOULDERS

### SERIES 00682



These grips offer a stainless steel rotary head with color-coded shoulders and triple weave galvanized wire construction for extra strength. The shoulders help to protect the leading edge of the cable or ducting and this type should be used for heavy duty applications.



Part No.	Color Code	Size Range	Approximate Mesh Length	A	B	C	D	Approximate Breaking Strength	Weight
00682-006	Dark Green	0.25" to 0.49"	28"	7/8"	5/16"	1/2"	2-3/4"	6,500 lb	0.53 lb
00682-012	Brown	0.50" to 0.74"	33"	1"	1/2"	9/16"	3-7/8"	10,400 lb	1.05 lb
00682-019	Light Brown	0.75" to 0.99"	41"	1"	1/2"	9/16"	3-7/8"	16,000 lb	1.54 lb
00682-025	Gold	1.00" to 1.24"	51"	1-3/8"	1/2"	11/16"	5-3/8"	25,400 lb	3.84 lb
00682-032	Black	1.25" to 1.49"	60"	1-5/8"	9/16"	7/8"	6-1/8"	31,700 lb	5.27 lb
00682-038	Red	1.50" to 1.99"	75"	1-7/8"	21/32"	1"	7-3/8"	33,000 lb	7.19 lb
00682-048	Yellow	2.00" to 2.49"	75"	1-7/8"	21/32"	1"	7-3/8"	44,600 lb	9.51 lb

## DOUBLE WEAVE, ROTARY HEAD, SHOULDERS

### SERIES 00690



These grips offer a stainless steel rotary head with double-weave galvanized wire construction for durability. The shoulders help to protect the leading edge of the cable or ducting and this type should be used for medium to heavy duty applications.



Part No.	Size Range	Approximate Mesh Length	A	B	C	D	Approximate Breaking Strength	Weight
00690-038	0.50" to 0.74"	16"	7/8"	5/16"	1/2"	2-3/4"	5,800 lb	0.49 lb
00690-050	0.75" to 1.12"	24"	7/8"	5/16"	1/2"	2-3/4"	6,700 lb	0.72 lb
00690-100	1.13" to 1.49"	33"	1-3/8"	1/2"	11/16"	5-3/8"	13,000 lb	2.31 lb
00690-125	1.50" to 1.99"	36"	1-3/8"	1/2"	11/16"	5-3/8"	16,500 lb	3.00 lb
00690-200	2.00" to 2.49"	36"	1-5/8"	9/16"	7/8"	6-1/8"	21,000 lb	4.27 lb
00690-250	2.50" to 2.99"	38"	1-7/8"	21/32"	1"	7-3/8"	33,000 lb	7.03 lb
00690-300	3.00" to 3.74"	39"	1-7/8"	21/32"	1"	7-3/8"	41,000 lb	7.03 lb
00690-350	3.75" to 4.24"	42"	1-7/8"	21/32"	1"	7-3/8"	48,000 lb	8.55 lb
00690-400	4.25" to 4.99"	58"	1-7/8"	21/32"	1"	7-3/8"	48,000 lb	10.88 lb

## DE TYPE-DOUBLE EYE CABLE GRIP



Ideal for pulling light to medium loads; the main advantage over the single eye cable grip is the cable being pulled can be passed through the grip, several cable grips can be used to support over a calculated distance. Double Eye cable grips are excellent as hose restraints for lower psi-rated hoses. A thimble eye may be custom ordered with these grips.



Slingco Part No.	Range		Lattice Weave	Lattice Length		Overall Length		Approximate Breaking Load (lb)
	(in)	(mm)		(in)	(mm)	(in)	(mm)	
<b>Double Eye Standard Grip - Galvanized</b>								
ZCS0305	0.25-0.50	10-13	Single	9"	230	12"	305	1,680
ZCS0306	0.50-0.75	13-19	Single	14"	355	17"	430	2,240
ZCS0307	0.75-1.00	19-25	Single	16"	405	20"	510	5,600
ZCS0308	1.00-1.50	25-38	Single	18"	455	24"	610	7,840
ZCS0309	1.50-2.00	38-50	Double	21"	535	29"	735	11,200
ZCS0310	2.00-2.50	50-63	Double	24"	610	34"	865	11,200
ZCS0311	2.50-3.50	63-89	Double	27"	685	39"	990	13,440
ZCS0312	3.50-4.50	89-115	Double	27"	685	39"	990	15,680
ZCS0878	4.50-5.50	115-140	Double	27"	685	39"	990	15,680
<b>Double Eye Standard Grip - 316 Stainless Steel</b>								
ZCS0823	0.25-0.50	10-13	Single	9"	130	12"	305	1,344
ZCS1007	0.50-0.75	13-19	Single	14"	355	17"	430	1,792
ZCS0931	0.75-1.00	19-25	Single	16"	405	20"	510	4,480
ZCS1265	1.00-1.50	25-38	Single	18"	455	24"	610	6,272
ZCS3995	1.14-1.57	29-40	Double	50"	1,270	62"	1,575	35,000
ZCS1252	1.50-2.00	38-50	Double	21"	535	29"	735	8,960
ZCS0319	2.00-2.50	50-63	Double	24"	610	34"	865	8,960
ZCS0213	2.50-3.50	63-89	Double	27"	685	39"	990	10,752
ZCS4873	2.50-3.50	63-89	Double	70"	1,778	80"	2,032	13,500
ZCS4596	2.50-3.50	63-89	Triple	56"	1,422	152"	1,344	16,138
ZCS0332	3.50-4.50	89-115	Double	27"	685	39"	990	12,544
ZCS1982	4.50-5.50	115-140	Double	27"	685	39"	990	12,544
ZCS4869	4.50-5.50	115-140	Double	70"	1,778	80"	2,032	13,500

## HEAVY DUTY HOSE RESTRAINT GRIPS



Safety restraining system designed to prevent whipping in the event of a pressurized hose becoming detached from its fitting.



Slingco Part No.		Range		Lattice Length		Lattice Weave	Approximate Breaking Load (lb)
		(in)	(mm)	(in)	(mm)		
<b>Double Thimble Eye - Galvanized Steel</b>							
ZCS5363	Thimble Eye	1.0-1.5	25-38	26"	660	Double	11,000
ZCS5364	Thimble Eye	1.5-2.5	38-63	40"	1,016	Double	20,000
ZCS5365	Thimble Eye	2.5-3.5	63-89	42"	1,067	Double	22,000
ZCS5366	Thimble Eye	3.5-4.5	89-114	44"	1,118	Double	27,000
ZCS5367	Thimble Eye	4.5-5.5	114-140	48"	1,219	Double	30,000
ZCS6012	Thimble Eye	5.5-7.0	140-180	60"	1,524	Double	50,000
ZCS5529	Thimble Eye	7.0-9.25	180-240	78"	2,000	Triple	66,000
<b>Double Thimble Eye - 316 Stainless Steel</b>							
ZCS5650	Thimble Eye	1.0-1.5	25-38	26"	660	Double	7,700
ZCS5651	Thimble Eye	1.5-2.5	38-63	40"	1,016	Double	14,000
ZCS5652	Thimble Eye	2.5-3.5	63-89	42"	1,067	Double	15,400
ZCS5653	Thimble Eye	3.5-4.5	89-114	44"	1,118	Double	18,900
ZCS5654	Thimble Eye	4.5-5.5	114-140	48"	1,219	Double	21,700
ZCS6000	Thimble Eye	5.5-7.0	140-180	60"	1,524	Double	35,000
<b>Double Eye Multi-weave - Max Strength - 316 Stainless Steel</b>							
ZCS3995	Thimble Eye	1.14-1.57	29-40	50"	1,270	Double	35,000
ZCS3295	Flex Eye	2.75-3.44	70-87	58"	1,460	Multiple	49,000
ZCS3254	Flex Eye	3.00-3.50	76-89	58"	1,460	Multiple	39,200
ZCS6004	Flex Eye	3.50-4.75	89-120	58"	1,460	Multiple	50,000
ZCS3414	Flex Eye	4.75-5.10	120-130	70"	1,981	Multiple	106,000

## OPEN ENDED CABLE GRIP



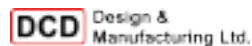
Slingco Part No.	Range		Lattice Weave	Lattice Length		Approximate Breaking Load (lb)
	(in)	(mm)		(in)	(mm)	
<b>Open Ended Standard Grip - Galvanized</b>						
ZCS0313	0.25-0.50	6-13	Single	15"	380	1,680
ZCS0314	0.50-0.75	13-19	Single	24"	610	2,240
ZCS0315	0.75-1.00	19-25	Single	28"	710	5,600
ZCS0316	1.00-1.50	25-38	Single	32"	815	7,840
ZCS0317	1.50-2.00	38-50	Double	36"	915	20,000
ZCS0318	2.00-2.50	50-63	Double	42"	1,065	11,200
ZCS1158	2.50-3.50	63-89	Double	48"	1,220	13,340
ZCS1159	3.50-4.50	89-115	Double	54"	1,370	15,680
ZCS1975	4.50-5.50	115-140	Double	54"	1,370	15,680
<b>Open Ended Standard Grip - 316 Stainless Steel</b>						
ZCS1995	0.25-0.50	6-13	Single	15"	380	1,344
ZCS1996	0.50-0.75	13-19	Single	24"	610	1,792
ZCS1997	0.75-1.00	19-25	Single	28"	710	4,480
ZCS1998	1.00-1.50	25-38	Single	32"	815	6,272
ZCS1999	1.50-2.00	38-50	Double	36"	915	8,960
ZCS2000	2.00-2.50	50-63	Double	42"	1,065	8,960
ZCS2001	2.50-3.50	63-89	Double	48"	1,220	10,752
ZCS2002	3.50-4.50	89-115	Double	54"	1,370	12,544
ZCS2003	4.50-5.50	115-140	Double	54"	1,370	12,544

Ideal for joining two cables to form a continuous loop. Typical application: replacement of lift cables, where the old cable would be attached to the new one, and the cable then fed around with ease. Also used to temporarily splice cable and conductor where torsion forces are not an issue. Torsion should be released prior to splicing. Where torsion is present a swivel and two grips should be used.



## DOUBLE WEAVE, OPEN ENDS

### SERIES 00697



These grips are open at both ends to splice rope or cable ends together (ex. for elevator or crane rope replacement) and have a double weave galvanized wire construction. The old cable may be attached to the new one and simply pulled through the blocks.



Part No.	Size Range	Approximate Mesh Length	Approximate Breaking Strength	Weight
00697-010	0.38" to 0.74"	60"	4,100 lb	0.58 lb
00697-020	0.75" to 1.12"	60"	4,974 lb	0.83 lb

## MARINE CABLE GRIPS



Ideal for pulling light to medium loads; the main advantage over the single eye cable grip is the cable being pulled can be passed through the grip, several cable grips can be used to support over a calculated distance. Double Eye cable grips are excellent as hose restraints for lower psi-rated hoses. A thimble eye may be custom ordered with these grips.



Slingco Part No.	Range		Lattice Length		Approximate Breaking Load (lb)
	(in)	(mm)	(in)	(mm)	
<b>Double Eye Standard Grip - Galvanized</b>					
ZCS3525	4-5	102-127	94"	2,360	100,000
ZCS3526	5-6	127-152	94"	2,360	105,000
ZCS3527	6-8	152-203	94"	2,360	112,000
ZCS3528	8-10	203-255	94"	2,360	138,000
ZCS3529	10-12	255-305	94"	2,360	138,000
ZCS3530	12-14	305-355	94"	2,360	138,000+
ZCS3531	14-16	355-406	118.11"	2,950	138,000+
ZCS3532	16-18	406-457	131.79"	3,290	138,000+
ZCS3533	18-20	457-508	157.48"	3,490	138,000+
ZCS3534	20-23	508-584	196.85"	4,920	138,000+
<b>Double Eye Standard Grip - 316 Stainless Steel</b>					
ZCS3535	4-5	102-127	94"	2,360	123,000
ZCS3536	5-6	127-152	94"	2,360	123,000
ZCS3537	6-8	152-203	94"	2,360	127,500
ZCS3538	8-10	203-255	94"	2,360	156,500
ZCS3539	10-12	255-305	94"	2,360	156,600+
ZCS3540	12-14	305-355	94"	2,360	156,600+
ZCS3541	14-16	355-406	118.11"	2,950	156,600+
ZCS3542	16-18	406-457	131.79"	3,290	156,600+
ZCS3543	18-20	457-508	157.48"	3,490	156,600+
ZCS3544	20-23	508-584	196.85"	4,920	156,600+
<b>Double Eye Lace Up</b>					
ZCS3545	4-5	102-127	94"	2,360	123,000
ZCS3546	5-6	127-152	94"	2,360	123,000
ZCS3547	6-8	152-203	94"	2,360	127,500
ZCS3548	8-10	203-255	94"	2,360	156,500
ZCS3549	10-12	255-305	94"	2,360	156,600+
ZCS3550	12-14	305-355	94"	2,360	156,600+
ZCS3551	14-16	355-406	118.11"	2,950	156,600+
ZCS3552	16-18	406-457	131.79"	3,290	156,600+
ZCS3553	18-20	457-508	157.48"	3,490	156,600+
ZCS3554	20-23	508-584	196.85"	4,920	156,600+



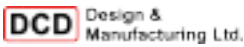
## NS - NON-METALLIC (ARAMID) SINGLE EYE CABLE GRIP



Slingco Part No.	Range		Lattice Length		Approximate Breaking Load (lb)
	(in)	(mm)	(in)	(mm)	
<b>Single Eye Single Weave Non-Metallic Grip</b>					
ZCS1040	0.38-0.75	10-20	24"	600	2,460
ZCS1022	0.75-1.25	20-30	24"	600	3,580
ZCS2923	1.00-1.50	25-40	24"	600	3,580
ZCS1041	1.25-1.50	30-40	24"	600	4,920
ZCS1042	1.50-2.00	40-50	24"	600	5,820
<b>Single Eye Double Weave Non-Metallic Grip</b>					
ZCS1023	1.25-1.50	30-40	24"	600	9,860
ZCS1024	1.50-2.00	40-50	24"	600	11,880
ZCS1179	2.00-2.50	50-65	24"	600	15,900
ZCS1180	2.50-3.00	65-80	24"	600	15,900
ZCS1181	3.00-4.00	80-100	24"	600	15,900
ZCS4079	4.00-5.00	102-127	6.0.6"	3,048	15,900



## NON-CONDUCTIVE, SINGLE/DOUBLE WEAVE, SINGLE EYE SERIES 00662/00664

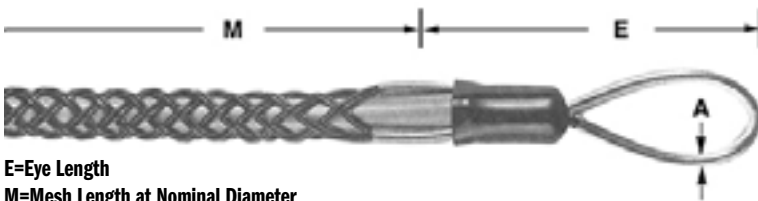


These grips are non-metallic and non-conductive, which is ideal for use in damp conditions or off-shore applications. The high-strength aramid fibers are coated, lightweight and flexible: Ideal for installing fiber optic cable or other high-tech cables. Smaller sizes are single weave, larger sizes are double weave.



Part No.	Size Range	Weave	Approximate Mesh Length	Approximate Breaking Strength	Weight
00662-010	0.38" to 0.74"	Single	34"	2,500 lb	0.12 lb
00662-020	0.75" to 1.12"	Single	35"	3,700 lb	0.18 lb
00664-040	1.13" to 1.49"	Double	35"	9,800 lb	0.22 lb
00664-040	1.50" to 1.99"	Double	38"	11,000 lb	0.46 lb

## NON-CONDUCTIVE GRIP



E=Eye Length  
M=Mesh Length at Nominal Diameter

Non-Conductive Pulling Grips are made of a high strength, non-conductive aramid fiber, and are available for pulling single cable or cable bundles. Their braided double weave design adds strength and positive holding power. They were developed for use by utilities for pulling overhead distribution lines in close proximity to energized lines and hardware.



Part No.	Description	Color	Cable Diameter Range		Approximate Breaking Strength		E		M		Cable Diameter A	
			(in)	(mm)	(lb)	(N)	(in)	(mm)	(in)	(mm)	(in)	(mm)
08642422	036-28-001	Green	.50-.62	13-16	1,000	4,448	5.5"	140	24.0"	610	.44"	11
08642428	036-28-002	Yellow	.63-.74	16-19	2,000	8,896	5.5"	140	26.0"	660	.44"	11
08642431	036-28-003	Red	.75-.99	19-25	2,000	8,896	6.0"	152	31.0"	787	.63"	16
08642437	036-28-004	Blue	1.00-1.24	25-31	3,000	13,345	6.5"	165	36.0"	914	.63"	16
08642443	036-28-005	White	1.25-1.49	32-38	3,000	13,345	6.7"	170	41.5"	1,054	.63"	16

## ND - NON-METALLIC (ARAMID) DOUBLE EYE CABLE GRIP



Slingco Part No.	Range		Lattice Length		Approximate Breaking Load (lb)
	(in)	(mm)	(in)	(mm)	
<b>Double Eye Single Weave Non-Metallic Grip</b>					
ZCS1148	0.38-0.75	10-20	24"	600	2,460
ZCS1176	0.75-1.25	20-30	24"	600	3,580
ZCS2922	1.00-1.50	25-40	24"	600	3,580
ZCS1177	1.25-1.50	30-40	24"	600	4,920
ZCS1178	1.50-2.00	40-50	24"	600	5,820
<b>Double Eye Double Weave Non-Metallic Grip</b>					
ZCS1182	1.25-1.50	30-40	24"	600	9,860
ZCS1183	1.50-2.00	40-50	24"	600	11,880
ZCS1184	2.00-2.50	50-65	24"	600	15,900
ZCS1185	2.50-3.00	65-80	24"	600	15,900
ZCS1186	3.00-4.00	80-100	24"	600	15,900
ZCS3813	4.00-5.00	102-127	60.9"	1,540	15,900



## ND - NON-METALLIC (ARAMID) OFFSET EYE CABLE GRIP

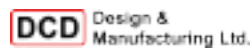


Slingco Part No.	Range		Lattice Length		Approximate Breaking Load (lb)
	(in)	(mm)	(in)	(mm)	
<b>Single Offset Eye Single Weave Non-Metallic Grip</b>					
ZCS2810	0.38-0.75	10-20	24"	600	2,460
ZCS2811	0.75-1.25	20-30	24"	600	3,580
ZCS2921	1.00-1.50	25-40	24"	600	3,580
ZCS2812	1.25-1.50	30-40	24"	600	4,920
ZCS2813	1.50-2.00	40-50	24"	600	5,820
<b>Single Offset Eye Double Weave Non-Metallic Grip</b>					
ZCS2814	1.25-1.50	30-40	24"	600	9,860
ZCS2815	1.50-2.00	40-50	24"	600	11,880
ZCS2816	2.00-2.50	50-65	24"	600	15,900
ZCS2817	2.50-3.00	65-80	24"	600	15,900
ZCS2818	3.00-4.00	80-100	24"	600	15,900

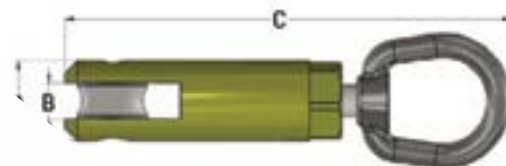


## WIRE GRIP SWIVEL

### SERIES 00501



These Swivels can be used in conjunction with DCD Wire Mesh Grips or standard 1/4" to 1/2" rope. They will allow the utility being installed to "unwind" as it is being pulled in, but like the rotary heads, these swivels will not rotate under load.



Part No.	Minimum Breaking Strength	A	B	C	Weight
00501-010	10,000 lb	1-1/4"	9/16"	7"	1.5 lb
00501-025	25,000 lb	1-5/8"	9/16"	8-5/8"	3.2 lb

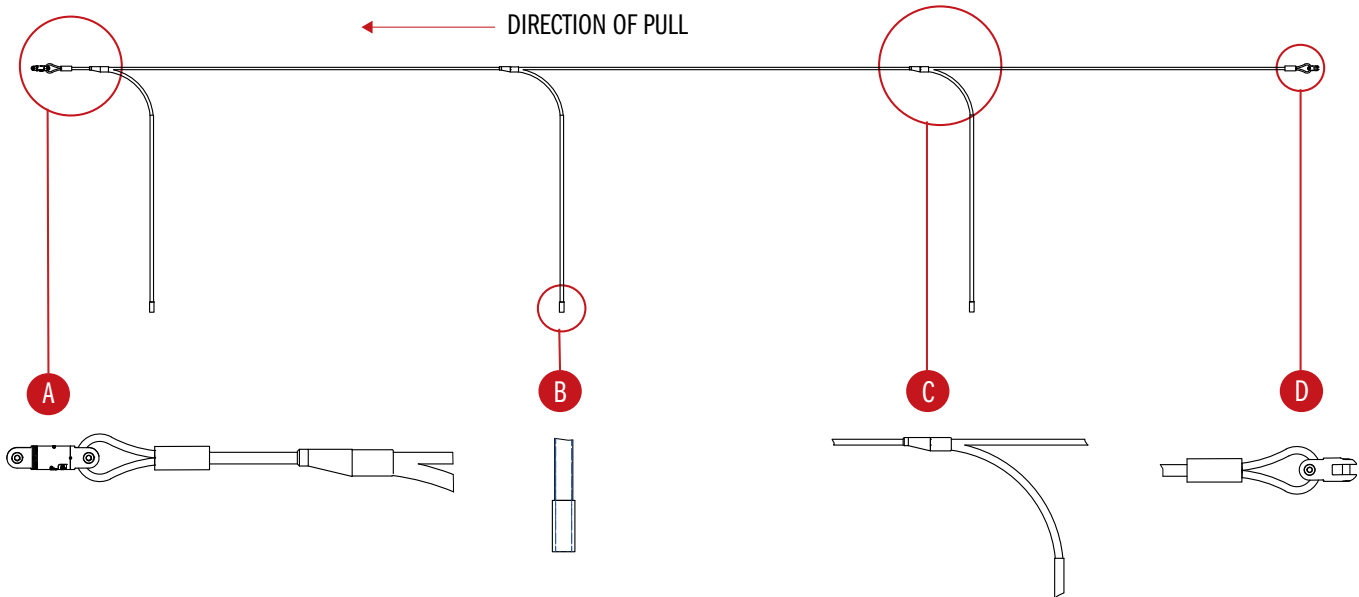
## ANTI-ROTATIONAL DEVICE



The device prevents the cable from twisting as it travels over pulling blocks. Left uncontrolled the optical cable's delicate glass fibers could be permanently damaged during installation.

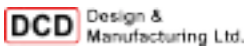


- Stops cables from twisting as they pass over pulling blocks
- For use with fiber optic and OPGW cable
- Prevents irreparable damage to delicate fiber optics caused by cable twists during installation
- The ARD has weighted attachments that hang down while stringing. Keeping the ARD vertical to stop cable rotation
- ARD attachments collapse in line, enabling them to travel easily over pulling blocks
- The ARD includes one 5,000 lb swivel attached to the head of the device.



## DOUBLE WEAVE, OPEN ENDS

### SERIES 00697



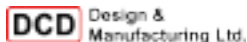
Originally intended for pulling OPGW cable, the Fiber Headboard is an anti-torsional device for applications in which you don't want rotation to occur. It incorporates a 00505-035 Line Swivel at the lead (pulling line) end, a 00520-035 Can-Link Connector at the tail (cable) end, and three dangling arms providing the torque stability required to prevent turning.



Part No.	Approximate Length	5:1 Safe Working Load	Weight
00698-035	20 ft	8,500 lb	180 lb

## FEED TUBE FOR ROPE (used with 00695 Series)

### SERIES 00696



When pulling rope, this Feed Tube can be used to help feed the leading end of the rope into the grip.



Part No.	Size Range	Tube Length	Weight
00696-019	0.25" to 0.65"	28"	0.94 lb
00696-038	0.50" to 0.90"	40"	2.32 lb
00696-063	0.75" to 1.10"	52"	2.71 lb
00696-088	1.00" to 1.50"	67"	5.65 lb
00696-113	1.25" to 1.70"	83"	9.20 lb
00696-138	1.50" to 2.10"	96"	10.28 lb

## DUA-PULL® FEED TUBE



The Feed Tube is used when assembling synthetic rope into the Dua-Pull Grip. It is required on the two largest sizes of Dua-Pull Grips. Feed Tubes are available for use on all sizes of Dua-Pull Grips.



Part No.	Description	For Use With Dua-Pull Grip	Rope Diameter		Feed Tube Length	
			(in)	(mm)	(in)	(mm)
08641610	091-06-1043	08641710	.25-.65	6-17	28"	711
08641616	091-06-1044	08641716	.50-.90	13-23	40"	1,016
08641628	091-06-1045	08641728	.75-1.10	19-28	52"	1,321
08641634	091-06-1046	08641734	1.00-1.50	25-38	67"	1,702
08641640	091-06-1047	08641740	1.25-1.70	32-43	83"	2,108
08641646	091-06-1048	08641746	1.50-2.10	38-53	96"	2,438

## BANDING TOOL



The Slingco Banding Tool is the fast and easy way to install banding clamps on your cable grips. Designed for fast and efficient installation of steel bands for cable grips, hoses and many other applications. The drop forged construction and comfortable design makes it quick and easy to use and guarantee a long and useful tool life.

We have a range of steel bands available from stock and can also manufacture custom sizes if required.



Slingco Part No.	Description
CPC2875	Banding Tool

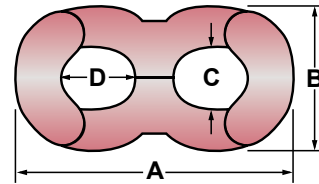
Slingco Part No.	Pre-Looped Bands
CPC2875	Galvanized Bands 3/8" x 13/16" (100 per box)
CPC2880	Galvanized Bands 5/8" x 1" (100 per box)
CPC2879	Galvanized Bands 5/8" x 1.5" (100 per box)
CPC2878	Galvanized Bands 5/8" x 2" (100 per box)
CPC2877	Galvanized Bands 5/8" x 2" (50 per box)

**Note:** Banding tool will work with 3/8" and 5/8" non-looped bands also.



## FIGURE 8 SWING LINK

For quick connections to winch link or pulling harnesses



**Note:** To be used for cable stringing or pulling only.

Part No.	Size		Working Load Limit		A		B		C		D	
	(in)	(mm)	(lb)	(N)	(in)	(mm)	(in)	(mm)	(in)	(mm)	(in)	(mm)
08580825	1/4"	6	540 lb	2,402	1.94"	49	.94"	24	.38"	10	.50"	13
08580837	3/8"	10	900 lb	4,003	2.90"	74	1.31"	33	.50"	13	.63"	16
08580850	1/2"	13	1,620 lb	7,206	3.25"	83	1.63"	41	.69"	18	.75"	19
08580875	3/4"	19	3,600 lb	16,013	5.00"	127	2.50"	64	.94"	24	1.13"	29
08580899	1"	25	8,100 lb	36,029	6.50"	165	3.25"	83	1.25"	32	1.50"	38

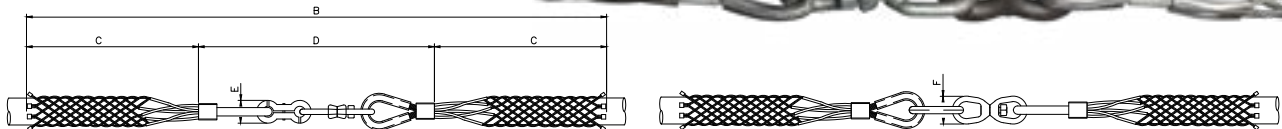
### Swing Link Compatibility Chart

Part No.	Size		Pulling Eye Size Range Standard Head Reusable Power Pulling Eyes	Fixed Head Innerduct Pulling Eyes	Eye to Eye Connectors	Pulling Harnesses	
	(in)	(mm)	Cable Size	Duct I.D. (in)	Size (in)	Separate Leg Ends	Large Front Link
08580825	1/4"	6	-	-	-	1/8", 1/4"	-
08580837	3/8"	10	500, 700, 750 kcmil	-	3/8"	1/8", 1/4", 3/8", Chain	-
08580850	1/2"	13	350, 500, 1,000-2,500 kcmil	-	3/8", 1/2"	All Cable	2" x 1/2"
08580875	3/4"	19	1,000-2,500 kcmil	-	All	All Cable	1/8", 1/4", 3/8", 2" x 1/2", Chain
08580899	1"	25	-	-	1/2", 5/8"	All Cable	All

## SPLICING GRIP - ROTATING SWIVEL LINK



Slingco Rotating Swivel Link Grips are perfect for stringing replacement wire and cable on equipment and in drilling or rigging systems. Not recommended for use in overhead stringing applications. Use the existing cable as a pull wire to string the replacement cable. These grips are available with differently sized grips for each side. Call for assistance in selecting the proper grip. Link opens for easy installation and adjustment. Made of Galvanized Steel.



Slingco Part No.	Range		B		C		D		E		F		Approximate Breaking Load (lb)
	(in)	(mm)	(in)	(mm)	(in)	(mm)	(in)	(mm)	(in)	(mm)	(in)	(mm)	
ZCS3493	0.25-0.50	6-13	100.0"	2,540	44.3"	1,127	11.3"	288	0.87"	22	1.25"	32	2,400
ZCS3494	0.50-1.00	13-25	103.8"	2,641	46.0"	1,170	11.8"	301	1.38"	35	1.25"	32	3,526
ZCS3495	1.00-1.50	25-38	103.0"	2,614	44.9"	1,140	13.1"	334	1.61"	41	1.61"	41	5,070
ZCS3496	1.50-2.00	38-51	101.0"	2,573	43.7"	1,110	13.9"	353	1.61"	41	2.0"	51	8,000
ZCS3497	2.00-2.75	51-70	100.0"	2,540	42.9"	1,090	13.9"	353	1.61"	41	2.0"	51	10,000
ZCS3498	2.75-3.50	70-90	118.0"	3,013	52.3"	1,330	13.9"	353	1.61"	41	2.0"	51	10,000
ZCS3499	3.50-4.25	89-108	117.0"	2,973	51.6"	1,310	13.9"	353	1.61"	41	2.0"	51	10,000



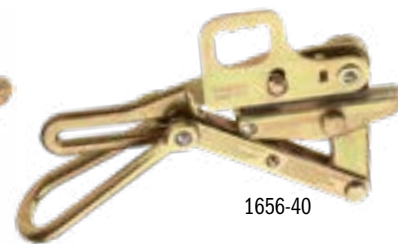
## Chicago™ Grips

### 1656 SERIES

- Round, smooth inside jaw contour on this series of grips is ideal for bar ACSR
- Smooth jawed grips with maximum contact are less likely to cause cable deformation



1656-30



1656-40

Part No.	Cable Type	Cable Diameter	Hot Latch	Spring	Locking Handle	Jaw Type	Jaw Length	Weight
<b>4,500 lb (2,041 kg) Maximum Safe Load</b>								
1656-20	Copper, ACSR, AAC	0.20" to 0.40" (5.08 to 10.16 mm)	-	-	•	Round	4" (10.2 cm)	2.7 lb
1656-20H	Copper, ACSR, AAC	0.20" to 0.40" (5.08 to 10.16 mm)	•	-	•	Round	4" (10.2 cm)	3.15 lb
S1656-20H	Copper, ACSR, AAC	0.20" to 0.40" (5.08 to 10.16 mm)	•	•	•	Round	4" (10.2 cm)	3.15 lb
1656-30	Copper, ACSR, AAC	0.31" to 0.53" (7.87 to 13.46 mm)	-	-	•	Round	4.75" (12.1 cm)	3.4 lb
1656-30H	Copper, ACSR, AAC	0.31" to 0.53" (7.87 to 13.46 mm)	•	-	•	Round	4.75" (12.1 cm)	3.95 lb
S1656-30H	Copper, ACSR, AAC	0.1" to 0.53" (7.87" to 13.46 mm)	•	•	•	Round	4.75" (12.1 cm)	4 lb
<b>8,000 lb (3,629 kg) Maximum Safe Load</b>								
1656-40	Copper, ACSR, AAC	0.53" to 0.74" (13.45 to 18.80 cm)	-	-	•	Round	5.5" (14 cm)	7.4 lb
1656-40H	ACSR, AAC	0.53" to 0.74" (13.45 to 18.80 cm)	•	-	•	Round	5.5" (14 cm)	8.5 lb
S1656-40H	ACSR, AAC	0.53" to 0.74" (13.45 to 18.80 cm)	•	•	-	Round	5.5" (14 cm)	8.65 lb
1656-50	ACSR, AAC	0.74" to 0.86" (18.80 to 21.84 cm)	-	-	•	Round	5.5" (14 cm)	7.5 lb
S1656-50H	ACSR, AAC	0.74" to 0.86" (18.80 to 21.84 cm)	•	-	•	Round	5.5" (14 cm)	8.45 lb
1656-50H	ACSR, AAC	0.74" to 0.86" (18.80 to 21.84 cm)	•	•	-	Round	5.5" (14 cm)	8.45 lb
1656-60	ACSR, AAC	0.86" to 0.96" (21.84 to 24.38 cm)	-	-	•	Round	5.5" (14 cm)	7.8 lb
S1656-60H	ACSR, AAC	0.86" to 0.96" (21.84 to 24.38 cm)	•	-	•	Round	5.5" (14 cm)	8.4 lb
1656-60H	ACSR, AAC	0.86" to 0.96" (21.84 to 24.38 cm)	•	•	-	Round	5.5" (14 cm)	8.36 lb

### 1628-16P SERIES

- Round jaws are shaped to provide maximum contact with the cable, virtually eliminating cable deformation
- Designed for large-diameter ACSR cables

\*These grips are special order only; please allow 30 days for delivery, special order grips are non refundable



1628-16P

Part No.	Cable Type	Cable Diameter	Hot Latch	Spring	Locking Handle	Jaw Type	Jaw Length	Weight
<b>15,000 lb (6,803 kg) Maximum Safe Load</b>								
1628-16PE	Copper, ACSR, AAC	0.31" to 0.33" (7.87 to 8.38 mm)	-	-	-	Round	7.25" (18.4 cm)	17.0 lb
1628-16PF	Copper, ACSR, AAC	0.33" to 0.39" (8.38 to 9.90 mm)	-	-	-	Round	7.25" (18.4 cm)	17.0 lb
1628-16PG	Copper, ACSR, AAC	0.40" to 0.45" (9.33 to 11.40 mm)	-	-	-	Round	7.25" (18.4 cm)	17.0 lb
1628-16PH	Copper, ACSR, AAC	0.46" to 0.52" (11.53 to 13.08 mm)	-	-	-	Round	7.25" (18.4 cm)	17.0 lb
1628-16PI	Copper, ACSR, AAC	0.52" to 0.58" (13.11 to 14.68 mm)	-	-	-	Round	7.25" (18.4 cm)	17.0 lb
1628-16PJ	Copper, ACSR, AAC	0.58" to 0.64" (14.71 to 16.25 mm)	-	-	-	Round	7.25" (18.4 cm)	17.0 lb
1628-16PK	Copper, ACSR, AAC	0.64" to 0.70" (16.28 to 17.68 mm)	-	-	-	Round	7.25" (18.4 cm)	17.0 lb
1628-16PL	Copper, ACSR, AAC	0.71" to 0.76" (17.89 to 19.43 mm)	-	-	-	Round	7.25" (18.4 cm)	17.0 lb
1628-16PM	Copper, ACSR, AAC	0.77" to 0.82" (19.46 to 21.03 mm)	-	-	-	Round	7.25" (18.4 cm)	17.0 lb
1628-16PN	Copper, ACSR, AAC	0.83" to 0.89" (21.06 to 22.61 mm)	-	-	-	Round	7.25" (18.4 cm)	17.0 lb

The "H" suffix does not indicate Hot Latch for this item.



## Chicago™ Grips

### 1628 SERIES

- Round jaws are shaped to provide maximum contact with the cable, virtually eliminating cable deformation

\*These grips are special order only; please allow 30 days for delivery, special order grips are non refundable



Part No.	Cable Type	Cable Diameter	Hot Latch	Spring	Locking Handle	Jaw Type	Jaw Length	Weight
<b>20,000 lb (9,072 kg) Maximum Safe Load</b>								
1628-30N	ACSR, AAC	0.83" to 0.89" (21.06 to 22.61 mm)	-	-	•	Round	10.75" (27.3 cm)	27.0 lb
1628-300	ACSR, AAC	0.89" to 0.96" (22.63 to 24.21 mm)	-	-	-	Round	10.75" (27.3 cm)	27.0 lb
1628-30P	ACSR, AAC	0.95" to 1.02" (24.23 to 25.78 mm)	-	-	-	Round	10.75" (27.3 cm)	27.0 lb
1628-30R	ACSR, AAC	1.02" to 1.08" (25.81 to 27.38 mm)	-	-	-	Round	10.75" (27.3 cm)	27.0 lb
1628-30S	ACSR, AAC	1.08" to 1.14" (27.41 to 28.96 mm)	-	-	-	Round	10.75" (27.3 cm)	27.0 lb
1628-30T	ACSR, AAC	1.14" to 1.20" (28.95 to 30.55 mm)	-	-	-	Round	10.75" (27.3 cm)	27.0 lb
1628-30U	ACSR, AAC	1.21" to 1.26" (30.7 to 32 mm)	-	-	-	Round	10.75" (27.3 cm)	27.0 lb
<b>25,000 lb (11,340 kg) Maximum Safe Load</b>								
1628-40U	ACSR, AAC	1.20" to 1.26" (30.48 to 32 mm)	-	-	•	Round	10.75" (27.3 cm)	34.0 lb
1628-40W	ACSR, AAC	1.27" to 1.32" (32.25 to 33.52 mm)	-	-	-	Round	10.75" (27.3 cm)	34.0 lb
1628-40X	ACSR, AAC	1.33" to 1.39" (33.78 to 35.30 mm)	-	-	-	Round	10.75" (27.3 cm)	34.0 lb
1628-40Y	ACSR, AAC	1.39" to 1.45" (35.30 to 36.83 mm)	-	-	-	Round	10.75" (27.3 cm)	34.0 lb
1628-40Z	ACSR, AAC	1.45" to 1.52" (36.83 to 38.6 mm)	-	-	-	Round	10.75" (27.3 cm)	34.0 lb
1628-40A	ACSR, AAC	1.52" to 1.58" (38.6 to 40.13 mm)	-	-	-	Round	10.75" (27.3 cm)	34.0 lb

### 1628 SERIES

- Removable bolt on floating jaw, secured by a slotted nut and cotter pin, Jaw provides increased cable coverage
- **NOTE:** Jaw must be removed to insert cable

\*These grips are special order only; please allow 30 days for delivery, special order grips are non refundable



Part No.	Cable Type	Cable Diameter	Hot Latch	Spring	Locking Handle	Jaw Type	Jaw Length	Weight
<b>25,000 lb (11,340 kg) Maximum Safe Load with Bolt-On Jaw</b>								
1628-50P	ACSR, ACSS, ACSS-TW, AAC	0.95" to 1.02" (24.23 to 25.78 mm)	-	-	•	Round	10.75" (27.3 cm)	34.0 lb
1628-50R	ACSR, ACSS, ACSS-TW, AAC	1.02" to 1.08" (25.91 to 27.43 mm)	-	-	-	Round	10.75" (27.3 cm)	34.0 lb
1628-50S	ACSR, ACSS, ACSS-TW, AAC	1.08" to 1.14" (27.41 to 28.96 mm)	-	-	-	Round	10.75" (27.3 cm)	34.0 lb
1628-50T	ACSR, ACSS, ACSS-TW, AAC	1.14" to 1.20" (28.95 to 30.55 mm)	-	-	-	Round	10.75" (27.3 cm)	34.0 lb
1628-50U	ACSR, ACSS, ACSS-TW, AAC	1.20" to 1.27" (30.48 to 32.25 mm)	-	-	-	Round	10.75" (27.3 cm)	34.0 lb
1628-50W	ACSR, ACSS, ACSS-TW, AAC	1.27" to 1.33" (32.25 to 33.78 mm)	-	-	-	Round	10.75" (27.3 cm)	34.0 lb
1628-50X	ACSR, ACSS, ACSS-TW, AAC	1.33" to 1.39" (33.78 to 35.30 mm)	-	-	-	Round	10.75" (27.3 cm)	34.0 lb
1628-50Y	ACSR, ACSS, ACSS-TW, AAC	1.39" to 1.45" (35.30 to 36.83 mm)	-	-	-	Round	10.75" (27.3 cm)	34.0 lb
1628-50Z	ACSR, ACSS, ACSS-TW, AAC	1.45" to 1.52" (36.83 to 38.6 mm)	-	-	-	Round	10.75" (27.3 cm)	34.0 lb

### DUAL CONNECTOR

- Designed specifically for VR2® (vibration-resistant) and TransPower® T-2® dual conductor twisted pair cables
- Machined upper and lower jaws eliminate scoring or damage to second conductor

\*These grips are special order only; please allow 30 days for delivery, special order grips are non refundable



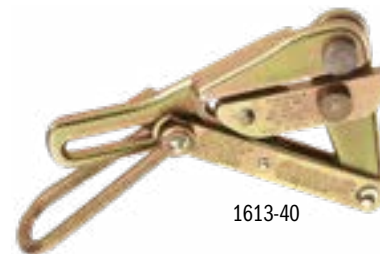
Part No.	Cable Type	Cable Diameter	Hot Latch	Spring	Locking Handle	Jaw Type	Jaw Length	Weight
<b>15,000 lb (6,803 kg) Maximum Safe Load</b>								
1628-40VRU	ACSR	1.20" to 1.27" (30.5 to 32.3 mm)	-	-	-	Round	10.75" (27.3 cm)	34.0 lb
1628-30VRU	ACSR	0.95" to 1.02" (24.13 to 25.91 mm)	-	-	-	Round	10.75" (27.3 cm)	27 lb



## Chicago™ Grips

### 1613, 1628, 1684, 1686, 1671, 1672 & 1692 SERIES

- Designed for cable sizes from 0.12" to 1" (3.05 mm to 25.4 mm)
- Double "V" grooves give four-point contact, reducing chance of slipping and providing proper alignment of wire and cable. 1684-5F is a Single V with file insert
- Features an aggressive jaw profile for extra gripping power
- 1671-10 & 1672-10 have a swing latch



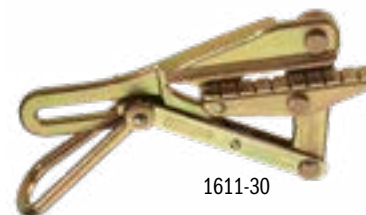
1613-40

Part No.	Cable Type	Cable Diameter	Hot Latch	Spring	Locking Handle	Jaw Type	Jaw Length	Weight
<b>4,500 lb (2,041 kg) Maximum Safe Load</b>								
1613-40	Aircraft, EHS, Messenger, Guy Strand	0.12" to 0.37" (3.05 to 9.40 mm)	-	-	•	Double V	4.188" (10.6 cm)	2.7 lb
1613-40H	Aircraft, EHS, Messenger, Guy Strand	0.12" to 0.37" (3.05 to 9.40 mm)	•	-	•	Double V	4.188" (10.6 cm)	3.15 lb
S1613-40H	Aircraft, EHS, Messenger, Guy Strand	0.12" to 0.37" (3.05 to 9.40 mm)	•	•	•	Double V	4.188" (10.6 cm)	3.2 lb
<b>8,000 lb (3,629 kg) Maximum Safe Load</b>								
1684-5F	Aircraft, EHS, Messenger, Guy Strand	0.16" to 0.55" (4.06 to 13.97 mm)	-	•	•	Single V w/File Insert	5" (12.7 cm)	6.4 lb
1684-5	Aircraft, EHS, Messenger, Guy Strand	0.218" to 0.55" (5.54 to 13.97 mm)	-	•	•	Double V	5" (12.7 cm)	5.8 lb
1684-5H	Aircraft, EHS, Messenger, Guy Strand	0.218" to 0.55" (5.54 to 13.97 mm)	•	-	•	Double V	5" (12.7 cm)	6.5 lb
S1684-5H	Aircraft, EHS, Messenger, Guy Strand	0.218" to 0.55" (5.54 to 13.97 mm)	•	•	•	Double V	5" (12.7 cm)	6.7 lb
1692-5	Aircraft, EHS, Messenger, Guy Strand	0.218" to 0.55" (5.54 to 13.97 mm)	-	•	•	Double V	5" (12.7 cm)	5.4 lb
<b>8,000 lb (3,629 kg) Maximum Safe Load - EHS Specific</b>								
1684-5C	Aircraft, EHS, Messenger, Guy Strand	0.218" to 0.55" (5.54 to 13.97 mm)	-	•	•	Aggressive	5" (12.7 cm)	6.0 lb
1684-74	Aircraft, EHS, Messenger, Guy Strand	0.218" to 0.55" (5.54 to 13.97 mm)	-	•	•	Double V, Milled Curved	5" (12.7 cm)	5.6 lb
1684-74H	Aircraft, EHS, Messenger, Guy Strand	0.218" to 0.55" (5.54 to 13.97 mm)	•	-	•	Double V, Milled Curved	5" (12.7 cm)	6.3 lb
S1684-74H	Aircraft, EHS, Messenger, Guy Strand	0.218" to 0.55" (5.54 to 13.97 mm)	•	•	•	Double V, Milled Curved	5" (12.7 cm)	6.45 lb
<b>10,000 lb (4,536 kg) Maximum Safe Load</b>								
1686-10	Aircraft, Messenger, Guy Strand	0.20" to 0.40" (5.08 to 10.16 mm)	-	-	-	Double V	4.375" (11.1 cm)	4.6 lb
1686-20	Aircraft, Messenger, Guy Strand	0.20" to 0.40" (5.08 to 10.16 mm)	-	-	-	Double V-Serrated	4.375" (11.1 cm)	4.6 lb
1671-10	Aircraft, Messenger, Guy Strand	0.37" to 0.75" (9.40 to 19.05 mm)	-	-	-	Double V	4.375" (11.1 cm)	4.3 lb
1672-10	Aircraft, Messenger, Guy Strand	0.37" to 0.75" (9.40 to 19.05 mm)	-	-	-	Double V-Serrated	4.375" (11.1 cm)	4.4 lb
<b>15,000 lb (6,803 kg) Maximum Safe Load</b>								
1628-16	Aircraft, EHS, Messenger, Guy Strand	0.20" to 0.40" (5.08 to 10.16 mm)	-	-	•	Double V	7.25" (18.4 cm)	13.7 lb
1628-17	Aircraft, EHS, Messenger, Guy Strand	0.50" to 0.75" (12.70 to 19.05 mm)	-	-	•	Double V	7.25" (18.4 cm)	14.6 lb
1628-18	Aircraft, EHS, Messenger, Guy Strand	0.75" to 1.0" (19.05 to 25.40 mm)	-	-	•	Double V	7.25" (18.4 cm)	14.1 lb

### WEATHERPROOF STRANDED AND SOLID CABLE - 1611 SERIES

- Round inside jaw contour for weatherproof coated wire
- Notches in jaw provide firm grip on insulation

\*Due to various types of weatherproof coatings available, selection of proper grips is determined by outside diameter of cable.



1611-30

Part No.	Cable Type	Cable Diameter	Hot Latch	Spring	Locking Handle	Jaw Type	Jaw Length	Weight
<b>4,500 lb (2,041 kg) Maximum Safe Load</b>								
1611-20	Copper, ACSR, AAC	0.20" to 0.40" (5.08 to 10.16 mm)	-	•	•	Notched	4.188" (10.6 cm)	2.6 lb
1611-30	Copper, ACSR, AAC	0.31" to 0.53" (7.87 to 13.46 cm)	-	•	•	Notched	4.75" (12.1 cm)	3.4 lb
<b>8,000 lb (3,629 kg) Maximum Safe Load</b>								
1611-40	Copper, ACSR, AAC	0.53" to 0.70" (13.46 to 17.78 cm)	-	•	•	Notched	5.688" (14.5 cm)	7.4 lb
1611-50	Copper, ACSR, AAC	0.74" to 0.86" (18.80 to 21.84 cm)	-	•	•	Notched	5.688" (14.5 cm)	74 lb

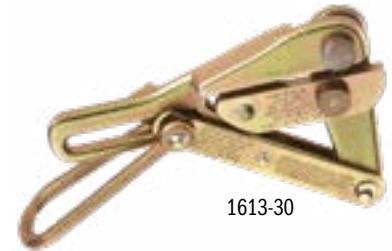




## Chicago™ Grips

### BARE WIRE - 1613 SERIES

- Designed for working with solid and stranded bare wire From 8" (2 mm) to 0.20" (5.1 mm)
- Lightweight, cost effective grip
- Single "V" groove jaw
- 1613-15 and 1613-35H pull # 6 and #8 bare copper wire without damaging or deforming cable

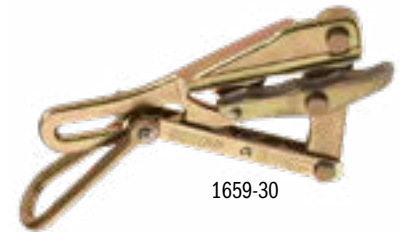


1613-30

Part No.	Cable Type	Cable Diameter	Hot Latch	Spring	Locking Handle	Jaw Type	Jaw Length	Weight
<b>1,500 lb (680 kg) Maximum Safe Load</b>								
1613-30	Copper, Steel, ACSR	0.08" to 0.20" (2.03 to 5.08 mm)	-	•	•	Single V	3" (7.6 cm)	1.5 lb
<b>4,500 lb (2,041 kg) Maximum Safe Load</b>								
1613-35	Copper, ACSR	0.1285" to 0.162" (3.3 to 4.06 mm)	-	•	•	Single V	4.188" (10.6 cm)	2.9 lb
1613-35H	Copper, ACSR	0.1285" to 0.162" (3.3 to 4.06 mm)	•	•	•	Single V	4.188" (10.6 cm)	2.8 lb

### PVC-COVERED CABLE - 1659 SERIES

- Specially machined serpentine jaws allow insulated conductor to be inserted through jaws
- Eliminates necessity of stripping insulation from conductor
- Round inside-jaw contour



1659-30

Part No.	Cable Type	Cable Diameter	Hot Latch	Spring	Locking Handle	Jaw Type	Jaw Length	Weight
<b>4,500 lb (2,041 kg) Maximum Safe Load</b>								
1659-20	PVC-Covered Cable	0.20" to 0.42" (5.08 to 10.67 mm)	-	•	•	Round-Serpentine	4.188" (10.6 cm)	2.6 lb
1659-30	PVC-Covered Cable	0.31" to 0.50" (7.87 to 12.70 mm)	-	•	•	Round-Serpentine	4.75" (12.1 cm)	3.3 lb
<b>8,000 lb (3,629 kg) Maximum Safe Load</b>								
1659-40	PVC-Covered Cable	0.49" to 0.79" (12.45 to 20.07 mm)	-	•	•	Round-Serpentine	5.688" (14.5 cm)	7.7 lb
1659-40	PVC-Covered Cable	0.79" to 1.01" (20.07 to 25.65 mm)	-	•	•	Round-Serpentine	5.688" (14.5 cm)	7.3 lb

### BELL SYSTEM B, L & H - 1628, 1659, 1684 & 1692 SERIES

- All are equipped with chain, toggle and shackle - keeps the grip from falling off of cable
- 165905AT is similar to Bell-System type "B" Strand Puller. Designed to pull 1/4" (6.35 mm) figure-8 telephone cable



1659-5AT

Part No.	Cable Type	Cable Diameter	Hot Latch	Spring	Locking Handle	Jaw Type	Jaw Length	Weight
<b>5,000 lb (2,268 kg) Maximum Safe Load</b>								
1659-5AT	Steel Strand	0.20" to 0.37" (5.08 to 9.4 mm)	-	•	•	Round-Serpentine	5" (12.7 cm)	6.7 lb
<b>8,000 lb (3,629 kg) Maximum Safe Load</b>								
1684-5CAT	Aircraft, EHS, Messenger, Guy Strand	2.18" to 0.55" (5.54 to 13.97 mm)	-	•	•	Aggressive	5" (12.7 cm)	6.9 lb
1692-5AT	Steel Strand	2.18" to 0.55" (5.54 to 13.97 mm)	-	•	•	Double V	5" (12.7 cm)	6.6 lb
<b>15000 lb (6,803 kg) Maximum Safe Load</b>								
1628-16AT	Aircraft, EHS, Messenger, Guy Strand	0.31" to .62" (7.87 to 15.75 mm)	-	•	•	Double V	7.25" (18.4 cm)	15.8 lb

## Haven's™ Grips

### 1604 SERIES

- Designed for use when light, compact grip is desired and where cable deformation is not a factor
- Gripping pressure of the knurled jaw is applied to 1/4" (6.35 mm) cable area
- Latch on 1604-20L helps hold cable in the jaw
- 1604-20L features a swing latch



Part No.	Cable Type	Cable Diameter	Hot Latch	Spring	Locking Handle	Jaw Type	Weight
<b>2,500 lb (1,134 kg) Maximum Safe Load</b>							
1604-10	Messenger and Guy Strand	0.06" to 0.25" (1.52 to 6.35 mm)	-	-	-	Aggressive	15.2 oz
<b>5,000 lb (2,268 kg) Maximum Safe Load</b>							
1604-20	Messenger and Guy Strand	0.125" to 0.5" (3.18 to 12.70 mm)	-	-	-	Aggressive	2.2 lb
1604-20L	Messenger and Guy Strand	0.125" to 0.5" (3.18 to 12.70 mm)	-	-	-	Aggressive	2.60 lb

### 1625 SERIES

- Designed for use when light, compact grip is desired and where cable deformation is not a factor
- Gripping pressure of knurled jaw is applied to 1/4" (6.35 mm) cable area
- All 1625 series have a swing latch to help hold cable in the jaw



Part No.	Cable Type	Cable Diameter	Hot Latch	Spring	Locking Handle	Jaw Type	Weight
<b>2,000 lb (907 kg) Maximum Safe Load</b>							
1625-20-114	Wire Rope	0.75" to 1.25" (19.05 to 31.74 mm)	-	-	-	Aggressive	3.7 lb
<b>8,000 lb (3,629 kg) Maximum Safe Load</b>							
1625-20	Wire Rope	0.28" to 0.75" (7.11 to 19.05 mm)	-	-	-	Aggressive	3.5 lb
1625-20-78	Wire Rope	0.38" to 0.88" (9.65 to 22.35 mm)	-	-	-	Aggressive	3.4 lb
1625-20-1	Wire Rope	0.50" to 1.00" (12.70 to 25.40 mm)	-	-	-	Aggressive	3.4 lb

### HDPE-COATED CABLE

- Securely pulls HDPE-coated cable commonly known as "tree wire"
- Innovative high-traction surface grips the cable without damaging the outer jacker
- Tough carbide grit technology withstands even the harshest jobsite conditions



Part No.	Cable Type	Cable Diameter	Hot Latch	Spring	Locking Handle	Jaw Type	Jaw Length	Weight
<b>4,000 lb (1,814 kg) Maximum Safe Load</b>								
1716-70	HDPE Coated	0.625" to 1.362" (15.9 to 34.6 mm)	•	•	-	Round	4.5" (11.4 cm)	5.10 lb
1716-71	HDPE Coated	0.625" to 1.362" (15.9 to 34.6 mm)	•	•	•	Round	4.5" (11.4 cm)	5.10 lb
<b>12,000 lb (5,443 kg) Maximum Safe Load</b>								
1716-60	HDPE Coated	0.70" to 1.30" (17.78 to 33.02 mm)	-	•	-	Round	5.125" (13 cm)	8.1 lb



For Professionals... Since 1857™

## Haven's™ Grips

### KT SERIES

- Versatile grips hold a wider range of ACSR cable sizes reducing the number of grips needed
- Round jaw provides maximum contact with the cable minimizing deformation
- Large opening in handle accommodates a wide variety of hooks, hoists, winches, and tackle blocks
- Hot latch closes automatically to guard against grip accidentally disengaging from wire
- Spring closes grip on cable helping to maintain initial position
- Locking handle keeps jaw open while grip is placed on cable with hot stick



Part No.	Cable Type	Cable Diameter	Hot Latch	Spring	Locking Handle	Jaw Type	Jaw Length	Weight
<b>5,000 lb (2,268 kg) Maximum Safe Load</b>								
KT4500	ACSR	0.18" to 0.60" (4.57 to 15.20 mm)	-	•	-	Round - Serrated	4" (10.2 cm)	3.8 lb
KT45005C	Guy Strand, EHS, Coated	0.18" to 0.60" (4.57 to 15.20 mm)	-	•	-	Round - Serrated	4" (10.2 cm)	3.8 lb
KT4501	ACSR	0.18" to 0.60" (4.57 to 15.20 mm)	•	•	•	Round - Serrated	4" (10.2 cm)	3.8 lb
KT4502	ACSR	0.18" to 0.60" (4.57 to 15.20 mm)	•	•	-	Round - Serrated	4" (10.2 cm)	3.8 lb
<b>10,000 lb (4,536 kg) Maximum Safe Load</b>								
KT4600	ACSR	0.30" to 0.80" (7.62 to 20.3 mm)	-	•	-	Round - Serrated	5" (12.7 cm)	7.0 lb
KT4601	ACSR	0.30" to 0.80" (7.62 to 20.3 mm)	•	•	•	Round - Serrated	5" (12.7 cm)	7.0 lb
KT4602	ACSR	0.16" to 0.90" (7.62 to 20.3 mm)	•	•	-	Round - Serrated	5" (12.7 cm)	7.0 lb
<b>12,000 lb (5,443 kg) Maximum Safe Load</b>								
KT4800	ACSR	0.70" to 1.25" (17.78 to 31.75 mm)	-	•	-	Round - Serrated	5.125" (13 cm)	9.0 lb
KT4801	ACSR	0.70" to 1.25" (17.78 to 31.75 mm)	•	•	•	Round - Serrated	5.125" (13 cm)	9.0 lb
KT4802	ACSR	0.70" to 1.25" (17.78 to 31.75 mm)	•	•	-	Round - Serrated	5.125" (13 cm)	9.0 lb

### WIDE RANGE DISTRIBUTION GRIPS

- Designed for use when light, compact grip is desired and where cable deformation is not a factor
- Gripping pressure of knurled jaw is applied to 1/4" (6.35 mm) cable area
- All 1625 series have a swing latch to help hold cable in the jaw



Part No.	Cable Type	Cable Diameter	Hot Latch	Spring	Locking Handle	Jaw Color	Jaw Type	Weight
16477	Bare Copper, Aluminum, & ACSR	0.162" to 0.883" (4.11 to 22.42 mm)	-	•	-	Gold	3.31" (8.4 cm)	2.9 lb
16477-20	Bare Copper, Aluminum, & ACSR	0.162" to 0.883" (4.11 to 22.42 mm)	•	•	•	Gold	3.31" (8.4 cm)	3.2 lb
16477-24	EHS	0.162" to 0.883" (4.11 to 22.42 mm)	-	•	-	Black	3.31" (8.4 cm)	2.9 lb
16477-28	HDPE-Coated Cable (tree wire)	0.162" to 0.883" (4.11 to 22.42 mm)	-	•	-	Silver	3.31" (8.4 cm)	2.9 lb

### 1685 SERIES

- Lightweight, compact grips pull an exceptionally wide range of cable sizes and types
- Designed with a round inside-jaw contour for maximum contact to minimize conductor damage
- Lower jaw is serrated to firmly grip insulated cables and conductors
- Large-diameter eye accommodates large hooks on hoists, winches and tackle blocks



Part No.	Cable Type	Cable Diameter	Hot Latch	Spring	Locking Handle	Jaw Type	Jaw Length	Weight
<b>5,000 lb (2,268 kg) Maximum Safe Load</b>								
1685-20	Messenger, EHS, Coated	0.157" to 0.875" (3.98 to 22.22 mm)	-	•	-	Round - Serrated	2.5" (6.4 cm)	2.6 lb
1685-31	Messenger, EHS, Guy Strand	0.625" to 1.250" (15.87 to 31.75 mm)	•	•	-	Round - Serrated	4.5" (11.4 cm)	4.8 lb



For Professionals... Since 1857™

## WEB STRAP RATCHET HOIST

- Large, non-conductive drum knob allows web slack to be adjusted with ease
- 360° handle rotation
- 3/4 ton single line and 1-1/2 ton double line load rating
- Tight ratcheting mechanism allows precise tensioning
- Meets ANSI/ASME B30/21-2005 & B30. 10-2009



### Single Line

**Load Rating:** 1,500 lb (675 kg)

**Min. to Max Pulling Distance:** 20" - 138" (500-3,500 mm)



### Double Line

**Load Rating:** 3,000 lb (1,350 kg)

**Min. to Max Pulling Distance:** 26" - 79" (700 - 2,000 mm)



Part No.	Pull Type	Weight
KN1500P-EX	Single/Double	12.5



## 3K STRAP HOIST

The Slingco 3k Strap Hoist uses pressure die castings for a professional look, consistent material properties, and smooth finish. The strap is hi-viz bright green in color for easy visibility. The strap hoist has three operating positions: lift/pull, lower/release, and freewheeling.

- ASME B-30-21 compliant.
- 125% working load tested
- Hi-viz green strap
- Interlocking pawl lever system
- Replacement parts readily available
- Hot stick operable version
- Replacement parts available



Part No.	Type	Single Line			Double Line			Weight
		Capacity	Lift	Headroom	Capacity	Lift	Headroom	
ZLH10504	Standard	1,500 lb	10'	21"	3,000 lb	5'	25"	11.25 lb
ZLH10524	Hot Stick Operated	1,500 lb	10'	21"	3,000 lb	5'	25"	11.50 lb

**⚠ WARNING:** These are NOT occupational protective devices. DO NOT use for human support.



## JLH SERIES LEVER HOIST

JET® lifting systems are comprised of some of the safest and most durable chain and lever hoists for lifting, pulling and holding applications. If you're looking for safety, dependability, and durability, choose JET Lifting Systems.

- All steel construction
- Caged needle bearings support the load sheave to increase efficiency and promote smooth operation
- Enhanced ergonomic grip allows for greater operator control and increased comfort
- Grade 100, corrosive resistant plated load chain is a smaller, more compact link that is 20% stronger than Grade 80 load chain
- Heat Treated Load Plates
- Industrial rated alloy steel hooks rotate 360 degrees for easy rigging
- Weston style double ratchet pawl brake design splits the load to opposite sides of the ratchet gear for greater load security

Part No	Capacity (T)	Capacity (lb)	Standard Lift (ft)	Headroom (in)	Load Chain No. of Falls	Lever Length	LBS of Pull to Lift Capacity	Weight
<b>JLH SERIES LEVER HOISTS WITH OVERLOAD PROTECTION- 3/4 TON</b>								
JLH-75W0-5	3/4	1760 lb	5'	11"	5.6 x 1	10-1/4"	64	13 lb
JLH-75W0-10	3/4	1760 lb	10'	11"	5.6 x 1	10-1/4"	64	15 lb
JLH-75W0-15	3/4	1760 lb	15'	11"	5.6 x 1	10-1/4"	64	17 lb
JLH-75W0-20	3/4	1760 lb	20'	11"	5.6 x 1	10-1/4"	64	20 lb
<b>JLH SERIES LEVER HOISTS WITH OVERLOAD PROTECTION- 1 TON</b>								
JLH-100W0-5	1	2,200 lb	5'	11-4/5"	5.6 x 1	10-1/4"	79	13 lb
JLH-100W0-10	1	2,200 lb	10'	11-4/5"	5.6 x 1	10-1/4"	79	16 lb
JLH-100W0-15	1	2,200 lb	15'	11-4/5"	5.6 x 1	10-1/4"	79	18 lb
JLH-100W0-20	1	2,200 lb	20'	11-4/5"	5.6 x 1	10-1/4"	79	21 lb
<b>JLH SERIES LEVER HOISTS WITH OVERLOAD PROTECTION- 1-1/2 TON</b>								
JLH-150W0-5	1-1/2	3,520 lb	5'	13-1/5"	7.1 x 1	10-1/4"	75	18 lb
JLH-150W0-10	1-1/2	3,520 lb	10'	13-1/5"	7.1 x 1	10-1/4"	75	22 lb
JLH-150W0-15	1-1/2	3,520 lb	15'	13-1/5"	7.1 x 1	10-1/4"	75	26 lb
JLH-150W0-20	1-1/2	3,520 lb	20'	13-1/5"	7.1 x 1	10-1/4"	75	30 lb
<b>JLH SERIES LEVER HOISTS WITH OVERLOAD PROTECTION- 2-1/2 TON</b>								
JLH-250W0-5	2-1/2	5,500 lb	5'	14-3/4"	8.8 x 1	10-1/4"	82	25 lb
JLH-250W0-10	2-1/2	5,500 lb	10'	14-3/4"	8.8 x 1	10-1/4"	82	31 lb
JLH-250W0-15	2-1/2	5,500 lb	15'	14-3/4"	8.8 x 1	10-1/4"	82	36 lb
JLH-250W0-20	2-1/2	5,500 lb	20'	14-3/4"	8.8 x 1	10-1/4"	82	42 lb
<b>JLH SERIES LEVER HOISTS WITH OVERLOAD PROTECTION- 3 TON</b>								
JLH-300W0-5	3	7,040	5'	15-5/9"	10 x 1	16-1/3"	84	33 lb
JLH-300W0-10	3	7,040	10'	15-5/9"	10 x 1	16-1/3"	84	41 lb
JLH-300W0-15	3	7,040	15'	15-5/9"	10 x 1	16-1/3"	84	48 lb
JLH-300W0-20	3	7,040	20'	15-5/9"	10 x 1	16-1/3"	84	56 lb

\*CUSTOM LIFTS AVAILABLE IN ALL CAPACITIES IN 10 FT INCREMENTS



## JLP-A SERIES LEVER HOIST

Committed to delivering the simplest and most efficient safety solutions, JET is proud to introduce the new JLP-A Series of lever hoists. Designed to create a safer work environment, the JLP-A is the right choice for your light to medium-duty industrial applications.

- Grade 80 black oxide coated load chain for added durability
- Impact resistant all steel construction for added durability and protection
- Industrial rated alloy steel hooks rotate 360 degrees for easy rigging and slowly stretch to indicate an overload situation
- Needle bearings support the load sheave to increase efficiency and promote smooth operation
- JET's improved easy free chain design is a two-step, no load, free chaining system. The system permits quicker hoist positioning and take up of slack chain, and is engineered not to free chain under load

Part No	Capacity (T)	Capacity (lb)	Standard Lift (ft)	Headroom (in)	Load Chain No. of Falls	Lever Length	LBS of Pull to Lift Capacity	Weight
<b>JLP-A SERIES LEVER HOISTS WITH OVERLOAD PROTECTION- 3/4 TON</b>								
JLP-075A-5	3/4	1,650 lb	5'	12-4/5"	6 x 1	11"	31 lb	14 lb
JLP-075A-10	3/4	1,650 lb	10'	12-4/5"	6 x 1	11"	31 lb	17 lb
JLP-075A-15	3/4	1,650 lb	15'	12-4/5"	6 x 1	11"	31 lb	19 lb
JLP-075A-20	3/4	1,650 lb	20'	12-4/5"	6 x 1	11"	31 lb	22 lb
<b>JLP-A SERIES LEVER HOISTS WITH OVERLOAD PROTECTION- 1-1/2 TON</b>								
JLP-150A-5	1-1/2	3,300 lb	5'	15"	8 x 1	16-1/7"	49 lb	25 lb
JLP-150A-10	1-1/2	3,300 lb	10'	15"	8 x 1	16-1/7"	49 lb	30 lb
JLP-150A-15	1-1/2	3,300 lb	15'	15"	8 x 1	16-1/7"	49 lb	34 lb
JLP-150A-15	1-1/2	3,300 lb	20'	15"	8 x 1	16-1/7"	49 lb	39 lb
<b>JLP-A SERIES LEVER HOISTS WITH OVERLOAD PROTECTION- 3 TON</b>								
JLP-300A-5	3	6,600 lb	5'	18-8/9"	10 x 1	16-1/7"	71 lb	43 lb
JLP-300A-10	3	6,600 lb	10'	18-8/9"	10 x 1	16-1/7"	71 lb	50 lb
JLP-300A-15	3	6,600 lb	15'	18-8/9"	10 x 1	16-1/7"	71 lb	57 lb
JLP-300A-20	3	6,600 lb	20'	18-8/9"	10 x 1	16-1/7"	71 lb	65 lb

\*CUSTOM LIFTS AVAILABLE IN ALL CAPACITIES IN 10 FT INCREMENTS





## **Stocking Locations**

1300 National Ave Unit B  
Addison, IL 60101

1440 Kings HWY  
Haddon Heights, NJ 08035

**888-206-3044**

**[sales@builditright.us](mailto:sales@builditright.us)**

**[www.builditright.us](http://www.builditright.us)**