



*UNDERGROUND & OVERHEAD CONSTRUCTION • HORIZONTAL DIRECTIONAL DRILLING • LINE MAINTENANCE*

# ***TOOLS & EQUIPMENT***

## **CATALOG**

# **PUMPS & GENERATORS**



# THE RIGHT PRODUCTS, THE RIGHT SERVICE

## The Biggest Range of Wire Pulling Accessories and Drilling Fluid Additives

Are you planning a building project and looking for the most amazing prices on tools and accessories? Build It Right, Inc. is your one stop shop that provides the biggest range of products for drilling, cabling, and wire pulling in the U.S. Offering the highest quality products backed by our years of knowledge and expertise in the industry, you can easily build with confidence and convenience with everything you need at your fingertips.

## Offering the Right Accessories at the Right Price for Any Building Project

Build It Right, Inc. was founded on the needs of our customers to find the most useful and appropriate building products and accessories at the most amazing prices. Our focus is on the customer experience, which is why we deliver exceptional customer service through the most knowledgeable advice and high quality products. Whether you need wire pulling tools, Cetco drilling fluids, drilling polymer products and more, our team is here to help you find exactly what you need at the lowest price.

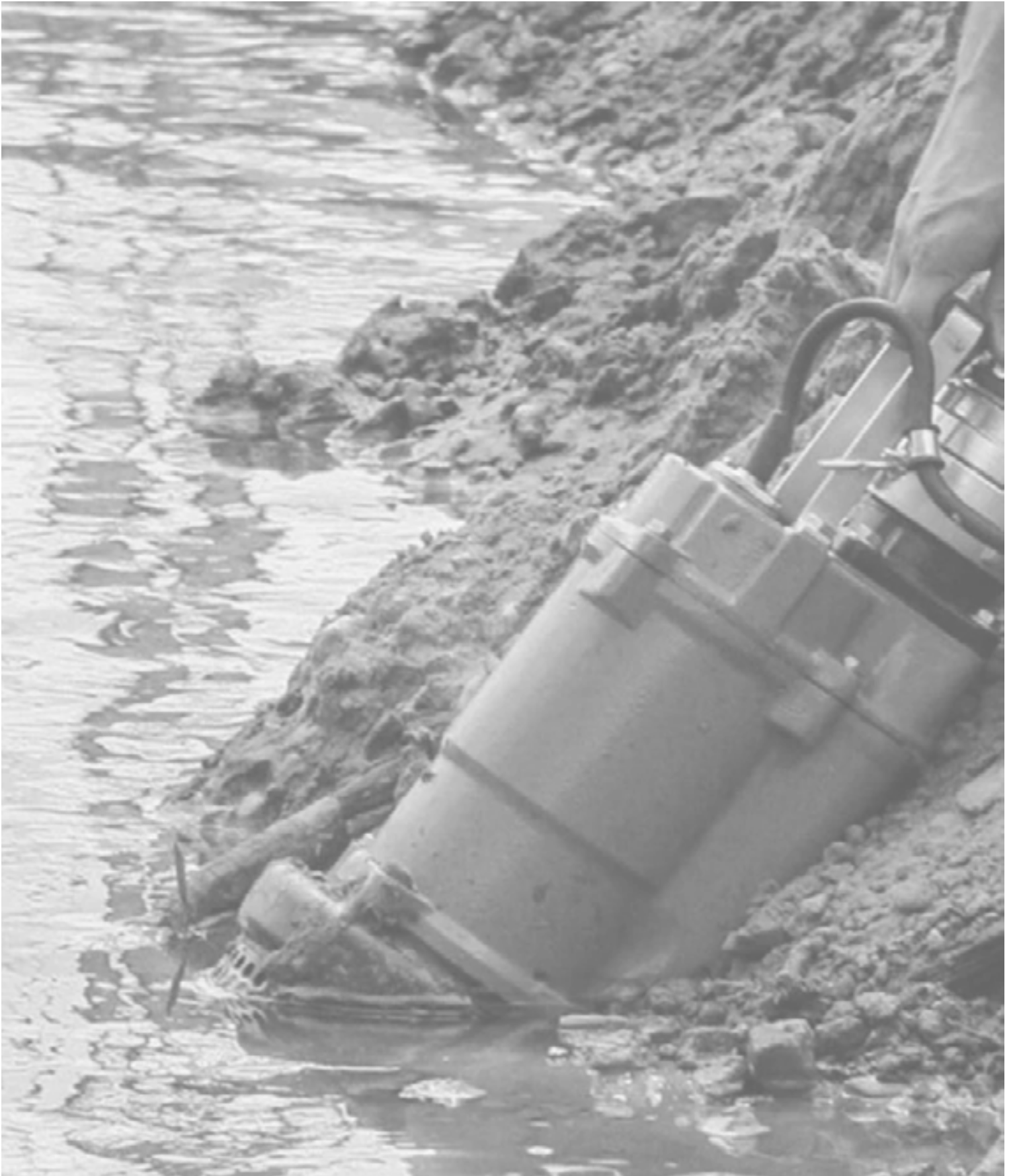
## Are You Looking for Directional Drilling Tools or Horizontal Directional Drilling Parts?

At Build It Right, we stock the most popular brands that deliver quality no matter what you need to build. Have your Cetco and Bentonite drilling fluids shipped right to your door so that you can build with confidence. You can also order your Cetco and Bentonite drilling fluids by the pallet! Install ducts with efficiency with duct installation range of products, or work quickly when installing cables with our easy to use cable roller range that delivers affordability and speed no matter how large your project is.

## Shop for Cable Puller Products and Accessories Today!

Rather than blowing your building project budget, shop for the most affordable high quality products and accessories with Build It Right, Inc. Offering nationwide shipping and the most competitive prices in the industry, our goal is to ensure that your project is a success. The right products. The right service. Shop Online today or call our team at 1-888-206-3044 to find out more.





Tsurumi Pumps TPG4-series generators are designed to withstand the severe conditions of construction job sites or industrial applications, especially where extra durability and dependable, stable power are required. Ideal to supply the power to Tsurumi's single-phase submersible pumps and all your electrical power tools such as drills, saws, lighting and heaters. All units meet EPA evaporative emission regulations and OSHA job-site standards. Powered exclusively by Honda Tsurumi's industrial or contractor grade generator is one of the quietest, most dependable in its class!



**TPG4-4500HDX**



**TPG4-6000HDX**

## Technical Specifications

- High capacity fuel tank with fuel gauge for extended run time
- Large, silent muffler with USDA qualified spark arrestor to greatly reduce noise
- Optional accessories: PGWK-200X Wheel Kit / PGLB-1X Lifting Bail

Model	Discharge Size (in)	Motor Output (HP)	Diameter (in)	Height (in)	Max Solid Diameter (in)	Weight (lb)
TPG4-3000HDX	NA	5.5	24.4"	20.5"	NA	110
TPG4-4500HDX	NA	8	27.6"	22.6"	NA	161
TPG4-6000HDX	NA	11.0	27.6"	22.6"	NA	183
TPG4-7000HDX	NA	13.0	27.6"	22.6"	NA	192
TPG4-7000HDXE	NA	13.0	27.6"	22.6"	NA	199

### TPG4-7500HDXE

Large Air Filter for superior emission control.

Automatic Idle Control reduces fuel consumption, noise, and engine wear.

Auto Idle Control Switch on Control Panel. (Not available on TPG4-3000HDX)

Powered by Honda OHV engine for efficient fuel and oil construction with oil alert system to shut off motor if oil falls below safe operating level.

Rubber Vibration Pads isolate generator / engine set for maximum protection and noise reduction.



# ENGINE DRIVEN PUMPS



Tsurumi engine driven pumps are constructed for maximum durability in a compact, easy handling design. Utilizing superior features and materials of construction Tsurumi provides an affordable high value pump line designed to withstand your tough dewatering applications.

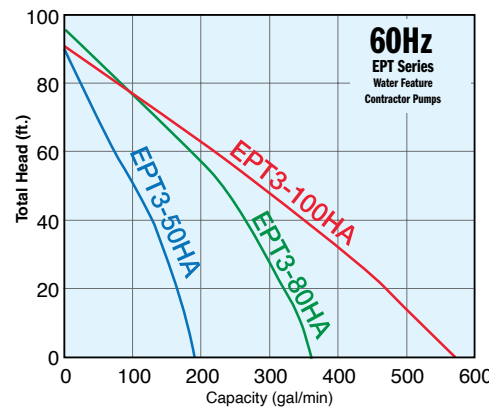
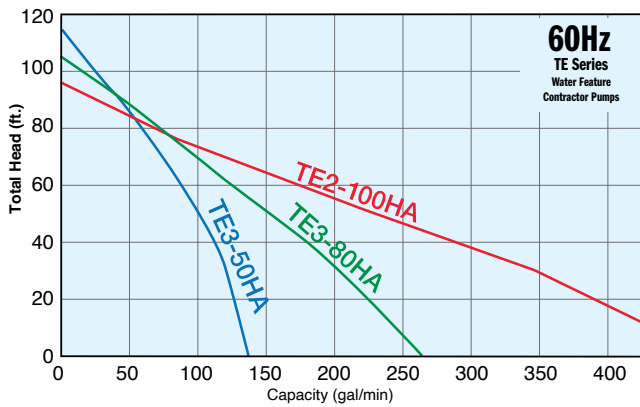


## TE Centrifugal Pumps:

- Heavy-Duty Honda gas engine with oil sensor and silicon carbide mechanical seal provides the longest life in this class
- Cast Iron impeller and volute casing
- Durable rolled-steel frame provides pump/engine with maximum protection, perfect ease of handling or transport, and safe operation

## EPT Trash Pumps:

- Powered by Honda gas engines with oil sensor alert
- High chromium impeller and cast iron volute casing
- Stainless Steel wear plate around the inside of the casing for extra durability
- Galvanized steel hose couplings for longer thread life
- Rubber vibration cushions to buffer stress and wear when pumps in operation



Model	Discharge Size (in)	Motor Output (HP)	Diameter (in)	Height (in)	Max Solid Diameter (in)	Weight (lb)
EPT3-100HA	4"	11.0	20-1/8"	26"	1.22"	160
EPT3-50HA	2"	5.5	18-1/4"	17-3/8"	0.787"	82
EPT3-80HA	3"	8	20-1/8"	25-5/8"	1.22"	136
TD6-200	2"	4	43"	23"	NA	160
TD6-300	3"	4	43"	23"	NA	175
TDE6-200	2"	4	44"	23"	NA	185
TDE6-300	3"	4	44"	23"	NA	185
TE2-100HA	4"	8	18"	23-1/2"	NA	109
TE2-25H	1"	1.1	14"	13"	NA	12
TE3-50HA	2"	4	14-5/8"	17-1/8"	NA	55
TE3-80HA	3"	5.5	16-1/2"	18-1/8"	NA	64
THP-4070HA	1.5"	5.5	21"	18"	NA	62



**H2.4S**



**LB480**



**NK3-22**

All Tsurumi electric submersible pumps are built for continuous duty with pump models available for every type of application. From clean water to dirty water and everything in between Tsurumi is sure to have a pump that will fit your needs. Included in Tsurumi pumps product mix are clean water pumps, sump pumps, trash pumps, slimline pumps, automatic pumps, and low level pumps that will pump down to floor level.

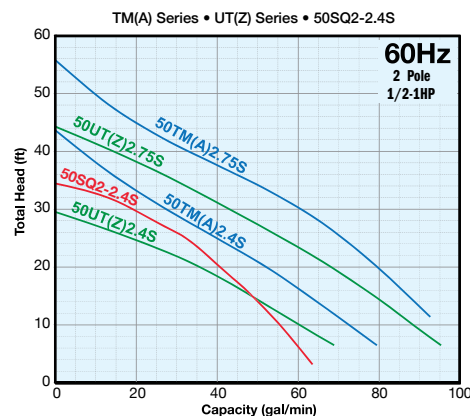
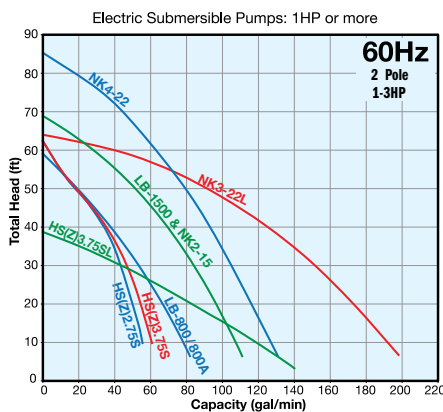
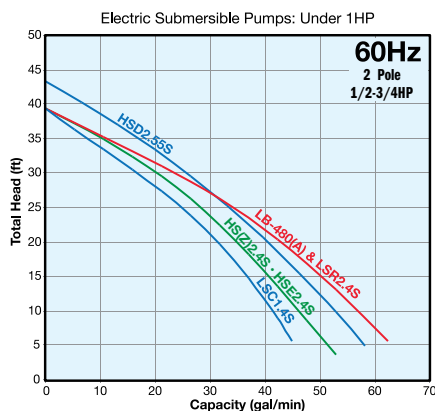
### Technical Specifications

- Built-in shaft mounted agitator suspends solids
- Urethane semi vortex impeller for maximum durability and pump performance
- Dual inside mechanical seal with SiC faces provides longest operational life
- Oil Lifter (Patented) provides lubrication of the seal faces
- V-ring seal design protects mechanical seal from abrasive particles
- HSZ Series - float operated automatic operation version

Model	Discharge Size (in)	Motor Output (HP)	Diameter (in)	Height (in)	(in)	Weight (lb)
HS2.4S	2"	1/2	10-1/16"	12-15/16"	0.276"	25
HS3.75S	3"	1	12-7/16"	15-5/16"	0.276"	43
HS3.75SL	3"	1	12-7/16"	16-3/4"	0.276"	50
HSD2.55S	2"	3/4	10-3/8"	15-3/8"	0.393"	39
HSE2.4S	2"	1/2	13-1/2"	17-1/2"	0.276"	26
HSZ2.4S	2"	1/2	13-1/2"	15-1/8"	0.276"	30
HSZ3.75S	3"	1	13-1/2"	17-1/2"	0.276"	50
HSZ3.75SL	3"	1	15-3/4"	19-7/8"	0.236"	50
LB-1500	3"	2	7-3/8"	23-5/16"	0.236"	85
LB-480	2"	2/3	7-11/16"	11-1/4"	0.236"	28
LB-480A	2"	2/3	8-3/4"	11-1/4"	0.236"	29
LB-800	2"	1	7-9/16"	13-7/16"	0.236"	37
LB-800A	2"	1	8-3/4"	13-7/16"	0.236"	38
LSC1.4S	0.75"	2/3	7-11/16"	12-7/16"	0.236"	31
LSR2.4S	2"	2/3	8-1/4"	11-3/8"	0.236"	28
NK3-22L	3"	3	9-1/4"	26-1/2"	0.334"	90
NK4-22	3"	3	9-7/16"	24-1/2"	0.334"	81

### GROUP PERFORMANCE RANGE

ELECTRIC SUBMERSIBLE PUMPS: SINGLE PHASE & THREE PHASE



CPWE pumps cater to a wide range of dewatering application from mines, process water, municipal and general dewatering. Low weight and high performance becomes a game changer when you have move pumps to multiple locations. The modular design helps in servicing the pump with ease. With the inbuilt electrical protections inside a sealed unit, installing the pump is a matter of minutes. These small things make a difference when things have to be quick and flexible in the field.

The CPWE D pumps are designed for drainage applications in tough environments such as mines, construction or tunnels sites.

**Media:** Water density up to 68.67 lb/cu ft

**Design:** Top discharge

**Solid Handling:** 0.16 - 0.47 inch PH values: from 5 to 8



Model No.	CPWE D04N		CPWE D04BN	CPWE D08N	CPWE D10N		CPWE D30L	
	1ph	1ph	1ph	1ph	3ph	1ph	3ph	

### Specifications

<b>Max. Head</b>	ft	39.4	39.4	53.3	52	52	58	56
<b>Max. Flow</b>	US gpm	67.6	59	79.3	117	119	370	370
	m3/h	15.0	13.5	19.5	28	29	75	75
<b>Rated Output</b>	hp	0.5	0.5	1.0	1.5	1.3	3.0	3.0
<b>Max Power input</b>	kW	0.65	0.65	1.2	1.5	1.2	3.1	2.9
<b>Discharge Connection</b>	in	2"	1" (2" optional)	2"	2"	2"	3" (4")	3" (4")
<b>Max Solid Handling Size</b>	in	0.3"	0.18"	0.3"	0.16"	0.16"	0.27"	0.27"

### Weight and Dimensions

<b>Weight</b>	lb	20.0	21.0	27.4	27.5	27.5	44.0	44.0
<b>Height</b>	in	13.4	16.4	14.1	15.5	15.5	20.6	20.6
<b>Width</b>	in	8.3	10.0	8.3	8.8	8.8	11.4	11.4
<b>Diameter</b>	in	7.2	8.7	7.3	7.3	7.3	8.7	8.7

CPWE pumps cater to a wide range of dewatering application from mines, process water, municipal and general dewatering. Low weight and high performance becomes a game changer when you have move pumps to multiple locations. The modular design helps in servicing the pump with ease. With the inbuilt electrical protections inside a sealed unit, installing the pump is a matter of minutes. These small things make a difference when things have to be quick and flexible in the field.

The CPWE D pumps are designed for drainage applications in tough environments such as mines, construction or tunnels sites.

**Media:** Water density up to 68.67 lb/cu ft

**Design:** Top discharge

**Solid Handling:** 0.16 - 0.47 inch PH values: from 5 to 8



Model No.	CPWE D30N		CPWE D40N	CPWE D50N	CPWE D50H	CPWE D60N	CPWE 60H	CPWE D60SH
	1ph	3ph	3ph	3ph	3ph	3ph	3ph	3ph

### Specifications

		CPWE D30N	CPWE D40N	CPWE D50N	CPWE D50H	CPWE D60N	CPWE 60H	CPWE D60SH
<b>Max. Head</b>	ft	90	83	72	83	135	100	250
<b>Max. Flow</b>	US gpm	200	190	450	620	310	700	340
	m3/h	51	51	79	138	72	156	90
<b>Rated Output</b>	hp	2.7	2.5	4.3	8.5	8.5	11.5	11.5
<b>Max Power input</b>	kW	3.0	2.6	4.0	7.5	7.5	10.0	10.0
<b>Discharge Connection</b>	in	3" (4")	3" (4")	3" (4")	4" (3")	3" (4")	3" (4")	3" (4")
<b>Max Solid Handling Size</b>	in	0.27"	0.27"	0.27"	0.32"	0.32"	0.32"	0.32"

### Weight and Dimensions

		CPWE D30N	CPWE D40N	CPWE D50N	CPWE D50H	CPWE D60N	CPWE 60H	CPWE D60SH
<b>Weight</b>	lb	44.0	44.0	55.0	122.0	122.0	134.0	138.0
<b>Height</b>	in	19.4	19.4	20.6	28.3	28.3	29.9	29.9
<b>Width</b>	in	11.4	11.4	11.4	13.0	11.9	13	11.9
<b>Diameter</b>	in	8.7	8.7	8.7	10.9	10.9	10.9	10.9



CPWE pumps cater to a wide range of dewatering application from mines, process water, municipal and general dewatering. Low weight and high performance becomes a game changer when you have move pumps to multiple locations. The modular design helps in servicing the pump with ease. With the inbuilt electrical protections inside a sealed unit, installing the pump is a matter of minutes. These small things make a difference when things have to be quick and flexible in the field.

The CPWE S pumps are designed for pumping water with high content of solids, up to 2 inches of size in hard environments like quarries, mines or tunnel sites.

**Media:** Water density up to 87.4 lb/cu ft

**Design:** Bottom side discharge

**Solid Handling:** 1-2 inch PH values: from 5 to 8



Model No.	CPWE S04N	CPWE S08N	CPWE S30N		CPWE S60N
	1ph	1ph	1ph	3ph	3ph

### Specifications

	ft	32.8	48.6	51	61	100
<b>Max. Head</b>						
<b>Max. Flow</b>	US gpm	58.1	76.6	190	230	420
	m3/h	16.2	19.0	43	52	95
<b>Rated Output</b>	hp	0.5	1.0	3.0	4.0	9.2
<b>Max Power input</b>	kW	-	-	2.8	3.6	8.0
<b>Discharge Connection</b>	in	2"	2"	3"	3"	3" (4")
<b>Max Solid Handling Size</b>	in	1"	1"	2"	2"	2"

### Weight and Dimensions

<b>Weight</b>	lb	22.1	28.7	55	55	143
<b>Height</b>	in	14.7	16.38	24.3	24.3	34.2
<b>Width</b>	in	10.9	10.9	12.8	12.8	17.7
<b>Diameter</b>	in	9.5	9.5	9.8	9.8	13.8

Chicago Pneumatics's pneumatic pumps are suitable for pumping sea water and certain corrosive chemicals as well as water from trenches, ditch manholes, etc. They can be used in industrial sumps and excavations: wet drilling applications where the pumped liquid contains rock fragments or other solids. The sludge pump can handle liquids containing up to 15 percent solids and including particles up to 1" (25 mm) in size. The pump should not be used to pump flammable liquids.

**See Compressors Page 464**

**Key features:**

- Cast-iron housing
- Integral oiler provides continuous lubrication
- No damage running without load
- Long life/low maintenance
- Extremely durable



**See Compressors on Page?**



Model No.		CP 10	CP 20	CP 77
<b>Power</b>	kW	2,2	2,9	-
<b>Weight</b>	kg	19,5	30,5	69
<b>Min Opening Needed</b>	mm	210 x 230	230 x 240	584 x 268
<b>Min Water Depth</b>	mm	22	22	0
<b>Max Suction Lift</b>	m	-	-	6,1
<b>Max Head</b>	m	30,5	27,4	53
<b>Air Consumption</b>	l/s	47	51	40
<b>Air inlet</b>	in	3/4" NPT	3/4" NPT	3/4" NPT
<b>Air Outlet</b>	in	1" NPT	1-1/4" NPT	1" NPT
<b>Discharge inlet</b>	in	-	-	3" BSP
<b>Discharge Outlet</b>	in	(2" NPT)	2-1/2" BSP	2-1/2" NPT
<b>Max Solid Content</b>				15%
<b>Sound Power Level Guaranteed (2--14/EC) 1)</b>	dB (A)	122	122	111
<b>Sound Pressure Level (ISO 11203) 1)</b>	dB (A)	109	109	98
<b>Sound Power Uncertainly Value K</b>	dB (A)	2,5	2,5	2,5
<b>Recommended Air Supply Hose Size</b>	mm	19	25	25



## SUMP PUMPS

### SM20 SUMP PUMP

The SM20 is one of the lightest and most durable pumps available. Completely submersible and pumping 250 gpm / 946 lpm at a 10-foot head and moving solids up to 5/16 of an inch makes it ideal for vaults and manholes. It features a cast aluminum inlet, steel or urethane impeller, Hyrevz™ motor, and is furnished with flush face quick disconnect couplers.



### SM21 SUMP PUMP

The SM21 is the ideal pump for areas of confined space and small openings. The SM21 pumps up to 300 gpm / 1125 lpm at a 50-foot head. The cast iron impeller is within 3/4 of an inch of the base allowing the pump to remove more liquids than other pumps. The SM21 features a lifting eye, 2.5 in. NPTF discharge, and is furnished with hose whips and flush face quick disconnect couplers.



### SM50 SUMP PUMP

The SM50 can pump an impressive 500 gallons per minute / 30,000 gallons per hour. It is completely submersible, can draw water down to a depth of 3.5 inches, and can run dry. It features a cast aluminum inlet, stainless steel impeller, lifting eye, 3 inch Camlock male discharge, and is furnished with flush face quick disconnect couplers.



Model	Part No.	Weight	Length	Width	Flow Range	Working Pressure	Full Relief Setting	Torque	Discharge	Impeller
SM20	SM2043101	18 lb	7.5"	9.6"	4-9 gpm/15-34 lpm	1,000-2,000 psi	2,250 psi	250 gpm/946 lpm	2.5"	Steel
	SM2052101	18 lb	7.5"	9.6"	4-9 gpm/15-34 lpm	1,000-2,000 psi	2,250 psi	250 gpm/946 lpm	2.5"	Urethane
	SM2053101	18 lb	7.5"	9.6"	4-9 gpm/15-34 lpm	1,000-2,000 psi	2,250 psi	250 gpm/946 lpm	2.5"	Urethane
SM21	SM2151101	25 lb	16"	6.25"	4-9 gpm/15-34 lpm	1,000-2,000 psi	2,250 psi	300 gpm/1,125 lpm	2.5"	Steel
SM50	SM50100	21 lb	10.5"	10"	7-12 gpm/26-45 lpm	1,000-2,000 psi	2,250 psi	500 gpm/1,890 lpm	3"	Steel

## STANLEY Infrastructure

### TRASH PUMPS

#### TP03 TRASH PUMP

The TP03 is a submersible trash pump and will pump liquids with concentrations of solids up to 25% by volume. It features a tough urethane bowl and impeller, lifting eye, removable top plate, 3 inch NPTF discharge, and flush face quick disconnect couplers.



Model	Part No.	Weight	Length	Width	Flow Range	Working Pressure	Full Relief Setting	Output	Discharge	Impeller
TP03	TP0300301	32 lb	14"	12"	7-9 gpm/26-34 lpm	2,000 psi	2,250 psi	450 gpm	3"	Urethane

#### TP08 SUMP PUMP

The TP08 is a heavy duty submersible trash pump capable of pumping high volumes of water, sand slurries, gravel, sludge and solids up to 4 inches in diameter. It features a steel bowl, cast iron impeller, polyethylene wear plates, carrying handle, removable top plate, 4 inch male Camlock discharge, and flush face quick disconnect couplers.



Model	Part No.	Weight	Length	Width	Flow Range	Working Pressure	Full Relief Setting	Output	Discharge	Impeller
TP08	TP08013	59 lb	19"	15"	7-10 gpm/26-38 lpm	2,000 psi	2,250 psi	800 gpm	4"	Steel

### ACCESSORIES

Model	Part No.	Description
SM20/SM21/SM50	02183	Fire Hose, 25" x 2-1/2"
	02317	Fire Nozzle 1" Output
	05133	2-1/2" Thread Adapter for Sump Pump to Fire Hose
	05134	50' Fire Hose, 2-1/2" Dia.
	05135	Spanner Wrench for Pin Lug Coupler
	15248	Adapter, 3" Female Camlock X Male Fire Hose (NH) Thread
	59101	Adapter, 2-1/2" Male NPT X 3" Male Camlock
SM20/SM21/SM50	56761	Discharge Hose
	52720	3" Adapter
	02812	Elbow
T03	52720	Adapter, 3" Male NPT X 3" Male Camlock
	56761	Lay-Flat Discharge Hose, 3" x 25' w/Camlock Fittings
T08	65624	Lay-Flat Discharge Hose, 4" x 25' w/Camlock Fittings



## 2" COMPACT SUBMERSIBLE WATER PUMP

- Self-priming, compact, lightweight design with carrying handle
- High impact strainer housing
- Up to 275 gpm (1,041 lpm)
- Can draw water down to depth of 1-3/4" (45 mm)
- Can run dry without damage
- Locking coupler for discharge hose included



Part No	System	Capacity	Intake Port	Discharge Port	Strainer	Flow Range	Operating Pressure	Pressure Port Thread	Return Port Thread	Weight
H4665A	Open- and Closed-Center	Up to 275 gpm (1,041 lpm) [at 7 gpm (27 lpm) and a 10' (3 m) head height]	1-15/16"	2"	2-5/8 x 5-58" (67 x 143 mm) - 3/8" (9.5 mm) openings	5 - 8 gpm	0 - 2,000 psi	9/16" - 18 SAE O-Ring	3/4" - 16 SAE O-Ring	9 lb



## 2-1/2" SUBMERSIBLE WATER PUMP

- High impact strainer housing with carrying handle
- Self-priming
- Up to 400 gpm (1,514 lpm)
- Pump is able to run dry for longer working life
- Can draw water down to depth of 2" (51 mm)
- Locking coupler for discharge hose included



Part No	System	Capacity	Intake Port	Discharge Port	Strainer	Flow Range	Operating Pressure	Pressure Port Thread	Return Port Thread	Weight
H4660B	Open- and Closed-Center	Up to 400 gpm (1,514 lpm) [at 7 gpm (27 lpm) and a 15' (4.5 m) head height]	1-1/2"	2-1/2"	7" x 2.5"	4 - 8 gpm	0 - 2,000 psi	1/2" Male NPTF	1/2" Male NPTF	23.5 lb



## 3" SUBMERSIBLE WATER PUMP

- Compact, under 12" (300 mm) diameter to easily fit into small areas
- Self-priming submersible pump can be placed and operated quickly
- Passes up to 3" (76 mm) solids minimizing pump blockage from debris
- Pump is able to run dry for longer working life
- Carry handle with lifting eye makes it easy to transport, move, lift, and lower
- Locking coupler for discharge hose included
- Can draw water down to depth of 2-3/4" (70 mm)



Part No	System	Capacity	Intake Port	Discharge Port	Trash Diameter	Flow Range	Operating Pressure	Pressure Port Thread	Return Port Thread	Weight
H4635t	Open- and Closed-Center	Up to 500 gpm (1893 lpm) [at 8 gpm (30 lpm) and a 15' (4.5 m) head height]	3.125"	3"	3"	7 - 10 gpm	0 - 2,000 psi	1/2" Male NPTF	1/2" Male NPTF	23.5 lb



CP hydraulic submersibles are a range of rugged pumps for continuous pumping of water on building sites, in flood excavations and cellars, and similar situations. Performance is impressive in relation to size and weight.

The 2 inch pump handles dirty water containing small stones and debris up to 3/8". The 3" CP submersible trash pump can handle stone and debris in the slurry up to 2-1/2" diameter. Cooled and lubricated by the hydraulic oil, they can be left to run dry without damage.



Model No.		WAP 2	WAP 3
<b>Weight</b>	lb	22.6 lb	13 lb
<b>Dimensions H x W</b>	in	10.5" x 8.5"	14.2" x 11.8"
<b>Oil Flow</b>	gpm	4-6	7-10
<b>Working Pressure</b>	psi	1,400	2,000
<b>Max Pressure</b>	psi	2,300	2,500
<b>Pump Head Max</b>	ft	82'	105'
<b>Pump flow Max</b>	gal/min	222	507
<b>Discharge</b>	in	2" BSP	3" BSP
<b>Solids Handling up to</b>	in	3/8"	2-1/2"
<b>HTMA Type</b>		I	II
<b>Part No.</b>		1806 1014 41	1806 1014 42

<sup>33</sup> 33 ft discharge hose with Snap-tite coupler included in pump delivery.

<sup>33</sup> **IMPORTANT:** Full details of measurement is available in the Safety and Operating Instruction of the product (part no. 3392 5178 01). It can be found on [www.cpprintshop.com](http://www.cpprintshop.com) or contact Build It Right for more information.

Type 7801 PVC Discharge Hose is an economical yet durable lay-flat PVC hose for contractor pump discharge and water transfer applications. This discharge hose is available in a broad range of stocked sizes, assembled or in bulk rolls. The co-extruded hose design will not de-laminate like many bonded lesser quality hoses. This abrasion resistant hose wall with 3-ply textile reinforcement will hold up to heavy use.

## 7801-BLUE PVC DISCHARGE



Assemblies with Male & Female NPSH Threaded Couplings

*7801-150X50MF	1-1/2 x 50'
7801-2X50MF	2" x 50'
*7801-250X50MF	2-1/2" x 50'
7801-3X50MF	3" x 50'
7801-4X50MF	4" x 50'
7801-6X50MF	6" x 50'

\*Sizes Available with NST Fire Thread  
3/4" & 1" Sizes Available with HD Brass MXF



Assemblies with Cam Lock Aluminum Quick Connect Couplings

*7801-150X50CE	1-1/2 x 50'
7801-2X50CE	2" x 50'
*7801-250X50CE	2-1/2" x 50'
7801-3X50CE	3" x 50'
7801-4X50CE	4" x 50'
7801-6X50MF	6" x 50'

Available with Ball & Socket Couplings

## BULK HOSE

- 300 ft Max Roll Length
- -5 to +170 Deg F

Part No.	Size (I.D.)	PSI Rating	Lb/Feet
7801-075	3/4"	140	0.08
7801-100	1"	110	0.11
7801-125	1-1/4"	80	0.14
7801-150	1-1/2"	80	0.19
7801-200	2"	80	0.24
7801-250	2-1/2"	65	0.30
7801-300	3"	80	0.36
7801-400	4"	70	0.53

Part No.	Size (I.D.)	PSI Rating	Lb/Feet
7801-500	5"	40	0.65
7801-600	6"	60	0.87
7801-800	8"	35	1.30
7801-10	10"	*35/80	1.90/2.15
7801-12	12"	*35/60	2.45/2.75
7801-14	14"	30	2.70
7801-16	16"	30	3.10

\*10" & 12" Also Available in Heavy Grade

PSI Rating listed is the recommended Max Operating Pressure of the Bulk Hose Only!  
Hose assembly working pressure rating is dependent on the coupling type.

## 7801R-RED PVC HEAVY-DUTY PVC DISCHARGE

Type 7801R HD-PVC Red Discharge Hose is a pump discharge hose designed with a heavier wall for higher working pressure rating and improved durability in rough applications. Similar in construction to our 7801 pump discharge hose but thicker, this hose is rated at 150 PSI through 6 inch (115 PSI for 8 inch size) for open flow applications. Commonly used in pump rental, dewatering/ remediation, and hydrant access and agriculture.



Assemblies with Male & Female NPSH Threaded Couplings

*7801R-150X50MF	1-1/2" x 50'
7801R-2X50MF	2" x 50'
*7801R-250X50MF	2-1/2" x 50'
7801R-3X50MF	3" x 50'
7801R-4X50MF	4" x 50'
7801R-6X50MF	6" x 50'

\*Sizes Available with NST Fire Thread  
3/4" & 1" Sizes Available with HD Brass MXF



Assemblies with Cam Lock Aluminum Quick Connect Couplings

*7801R-150X50CE	1-1/2" x 50'
7801R-2X50CE	2" x 50'
*7801R-250X50CE	2-1/2" x 50'
7801R-3X50CE	3" x 50'
7801R-4X50CE	4" x 50'
7801R-6X50MF	6" x 50'

Available with Ball & Socket Couplings

## BULK HOSE

- 300 ft Max Roll Length
- -5 to +170 Deg F

Part No.	Size (I.D.)	PSI Rating	Lb/Feet	Full Roll Length
7801R-150	1-1/2"	150	0.28	300'
7801R-200	2"	150	0.34	300'
7801R-250	2-1/2"	150	0.40	300'
7801R-300	3"	150	0.55	300'
7801R-400	4"	150	0.85	300'
7801R-600	6"	150	1.34	300'
7801R-800	8"	115	1.90	300'

PSI Rating listed is the recommended Max Operating Pressure of the Bulk Hose Only!  
Hose assembly working pressure rating is dependent on the coupling type.



Mill discharge hose is an abrasion resistant durable lay-flat hose for pump discharge and hydrant water supply service. Mill hose is designed in the style of fire hose, but is more economical and in a wide range of sizes. Our single jacket mill hose has a rubber tube, and a thick outer textile jacket that acts as the hose cover and reinforcement. The cover will not mildew or decay, and rolls up flat for easy storage. This hose is also available with abrasion resistant steadfast coating in a variety of colors for easy identification (by custom order). Available with internally expanded fire style hose fittings or band clamped contractor style hose fittings (as shown)

## 3200/3220 - MILL DISCHARGE



Assemblies with Male & Female NPSH Threaded Couplings

*3200-150X50MF	1-1/2 x 50'
3200-2X50MF	2" x 50'
*3200-250X50MF	2-1/2" x 50'
3200-3X50MF	3" x 50'
3200-4X50MF	4x 50'
3200-6X50MF	6 x 50'

\*Sizes Available with NST Fire Thread  
3/4" & 1" Sizes Available with HD Brass MXF



Assemblies with Cam Lock Aluminum Quick Connect Couplings

3200-150X50CE	1-1/2 x 50'
3200-2X50CE	2" x 50'
3200-250X50CE	2-1/2" x 50'
3200-3X50CE	3" x 50'
3200-4X50CE	4x 50'
3200-6X50MF	6 x 50'

Double Jacket Assemblies Available Type #3220 (See Chart Below)

## BULK HOSE

- 100 ft Max Roll Through 4"

### Single Jacket

Part No.	Size (I.D.)	PSI Rating	Lb/Feet
3200-100	1"	150	0.16
3200-150	1-1/2"	150	0.20
3200-200	2"	150	0.27
3200-250	2-1/2"	150	0.37
3200-300	3"	150	0.43
3200-400	4"	150	0.62
3200-600	6"	115	1.10

### Single Jacket

Part No.	Size (I.D.)	PSI Rating	Lb/Feet
3220-150	1-1/2"	300	0.29
3220-200	2"	300	0.40
3220-250	2-1/2"	300	0.50
3220-300	3"	250	0.63
3220-400	4"	250	0.76

NOT RATED FOR FIRE PROTECTION

PSI Rating listed is the recommended Max Operating Pressure of the Bulk Hose Only!  
Hose assembly working pressure rating is dependent on the coupling type.

## BUMBLE BEE CRUSH-RESISTANT VACUUM HOSE

Type 7910 Bumble Bee Vacuum Hose is a rugged crush-proof hose designed for demanding water suction applications. Bumble Bee vac hose, also known as TigerTail or Hi-Vac hose, is often relied upon in excavation, construction, utility services, and waste water pumping. The unique interlocking polyethylene design makes this hose light weight, full-vacuum rated, crush resistant, and extremely flexible even in sub-zero climates. Each length of bumble bee hose includes factory sealed leak-resistant black vacuum cuffed ends.



### Assemblies with Male & Female NPSH Threaded Couplings

7910-150X20MF	1-1/2" x 20'
7910-X20MF	2" x 20'
7910-3X20MF	3" x 20'
7910-4X20MF	4" x 20'
7910S-150X20MF	1-1/2" x 20'
7910S-X20MF	2" x 20'
7910S-3X20MF	3" x 20'
7910S-4X20MF	4" x 20'

### Assemblies with Male & Female Cam Lock Couplings

7910-150X20CE	1-1/2" x 20'
7910-X20CE	2" x 20'
7910-3X20CE	3" x 20'
7910-4X20E	4" x 20'
7910S-150X20CE	1-1/2" x 20'
7910S-X20CE	2" x 20'
7910S-3X20E	3" x 20'
7910S-4X20CE	4" x 20'

## BULK HOSE

Type 7910 - -40 To + 150 Deg F

Part No.	Size (I.D.)	PSI Rating	lb/ft
7910-150	1-1/2"	20	0.60
7910-200	2"	15	0.85
7910-300	3"	7	1.20
7910-400	4"	7	1.60

Type 7910S - -40 To + 140 Deg F

Part No.	Size (I.D.)	PSI Rating	lb/ft
7910S-150	1-1/2"	20	0.36
7910S-200	2"	14	0.57
7910S-300	3"	12	1.20
7910S-400	4"	10	1.47

## CLEAR BRAIDED PVC SUCTION HOSE

Type 7962 Clear Braided PVC Suction Hose is a heavy duty suction and discharge hose for applications where flexibility and visible product flow are desired. The embedded textile braid reinforcement allows for higher working pressure. The spiral corrugated cover allows for increased flexibility over smooth-cover hose or traditional wire-reinforced rubber hose. The bright orange corrugated helix also offers abrasion resistance and high-visibility for heavy traffic areas.



### Assemblies with Male & Female NPSH Threaded Couplings

7962-150X20MF	1-1/2" x 20'
7962-X20MF	2" x 20'
7962-3X20MF	2-1/2" x 20'
7962-4X20MF	3" x 20'
7962S-150X20MF	4" x 20'
7962S-X20MF	6" x 20'

### Assemblies with Male & Female Cam Lock Couplings

7962-150X20CE	1-1/2" x 20'
7962-X20CE	2" x 20'
7962-3X20CE	2-1/2" x 20'
7962-4X20E	3" x 20'
7962S-150X20CE	4" x 20'
7962S-X20CE	6" x 20'

## BULK HOSE

Type 7910 - -40 To + 150 Deg F

Part No.	Size (I.D.)	PSI Rating	Lb/Ft
7962-150	1-1/2"	100	0.49"
7962-200	2"	100	0.75"
7962-300	3"	100	1.19"
7962-400	4"	75	1.80"

Type 7910S - -40 To + 140 Deg F

Part No.	Size (I.D.)	PSI Rating	Lb/Ft
7962S-150	5"	70	3.00
7962S-200	6"	70	3.95
7962S-300	8"	70	5.60
7962S-400	10"	40	8.75

## 9801 - RUBBER DISCHARGE

Rubber Water Discharge Hose is a versatile rubber discharge hose construction offered in 2-ply and 4-ply textile reinforcement. This hose is suitable for medium and heavy duty discharge applications where durability and longevity are of benefit. Offered in a wide range of sizes, the 2 and 4 ply options allow options in pressure and weight. An excellent hose for long term installations, it is also available in oil resistant rubber, Type 6802. Can be custom manufactured up to 24" ID and to your specifications.

Assemblies with Male & Female NPSH Threaded Couplings		Assemblies with Cam Lock Aluminum Quick Connect Couplings	
*9801-150X50MF	1-1/2" x 50'	9801-150X50CE	1-1/2" x 50'
9801-2X50MF	2" x 50'	9801-2X50CE	2" x 50'
*9801-250X50MF	2-1/2" x 50'	9801-250X50CE	2-1/2" x 50'
9801-3X50MF	3" x 50'	9801-3X50CE	3" x 50'
9801-4X50MF	4" x 50'	9801-4X50CE	4" x 50'
9801-6X50MF	6" x 50'	9801-6X50MF	6" x 50'



## BULK HOSE

- 100 ft Max Roll Through 4"
- -25 to +180 Deg F

Assembly Numbers shown are for 2-PLY Reinforced Hose  
4-PLY Reinforced Hose Available, #9801H (See Chart Below)  
Available with Ball & Socket Couplings

Part No.	Size (I.D.)	2-Ply PSI Rating	4-Ply PSI Rating	Part No.	Size (I.D.)	2-Ply PSI Rating	4-Ply PSI Rating
9801-150	1-1/2"	150	250	9801-500	5"	150	200
9801-200	2"	150	250	9801-600	6"	100	150
9801-250	2-1/2"	150	250	9801-800	8"	100	125
9801-300	3"	150	225	9801-10	10"	100	125
9801-400	4"	150	200	9801-12	12"	100	125

Large Diameter Hose & Abrasion Resistant Tube Materials Available  
Not Recommended for Sand, Gravel, or Cement Discharge Applications

## GENERAL SERVICE AIR HOSE

Our General Service Air Hose is a versatile USA-made EPDM rubber air hose with an abrasion resistant tough cover and kink-resistant tube. This high-grade hose is rated for general air and water service at 300 PSI from 1/4 through 1" ID, 200 PSI up to 2" diameter. We offer a broad range of stock sizes on bulk reels or cut and assembled in a variety of end configurations. The EPDM rubber tube and cover is ozone resistant, flexible in cold climates, and can also handle oil-misted compressed air. A highly versatile and cost effective hose option for pneumatic tool and jackhammer service.

Assemblies with Universal Couplings			Assemblies with M NPT Brass Couplings		
Part No.	Size (I.D.)	Color	Part No.	Hose (I.D.)	Thread Size (NPT)
1502-50X50R	1/2"	Red	1502-25X50MM	1/4"	1/4"
1502-75X50R	3/4"	Red	1502-38X50-04M	3/8"	1/4"
1502M-75X50R	3/4"	Red	1502-38X50-06M	3/8"	3/8"
1502-75X50Y	3/4"	Yellow	1502-50X50MM	1/2"	1/2"
1502-75X50B	3/4"	Blue			
1502-1X50R	1"	Red			
1502M-1X50R	1"	Red			

## BULK HOSE

Part No.	Size (I.D.)	Lb/Ft	Ft/Reel	Part No.	Size (I.D.)	Lb/Ft	Ft/Reel
1502-25	1/4"	0.12	800	1502-100	1"	0.52	300
1502-38	3/8"	0.16	700	1502-125	1-1/4"	0.80	250
1502-50	1/2"	0.25	500	1502-150	1-1/2"	0.90	200
1502-63	5/8"	0.35	450	1502-200	2"	1.20	250
1502-75	3/4"	0.38	400				



Cam Lock Couplings, are popular in a wide array of vacuum and low pressure fluid applications where a hose assembly is frequently connected and removed. These couplings mate quickly and conveniently by inserting the grooved male adapter into the female cam coupling and simply closing the cam arms. A gasket inside the female coupling compresses as the cam arms close creating a tight leak free seal. Safety pins can be inserted to prevent the cam arms from accidental disconnection.

## CAM LOCK COUPLINGS



**TYPE A**  
Male Cam X F NPT



**TYPE B**  
Female Cam X M NPT



**TYPE C**  
Female Cam X Hose



**TYPE D**  
Female Cam X F NPT



**TYPE E**  
Male Cam X Hose



**TYPE F**  
Male Cam X M NPT



**TYPE DA**  
Female Cam X Male Cam



**TYPE DP**  
Male Cap



**TYPE DC**  
Female Cap

For Part Number, Add Letter of Coupling Type Above into Chart Below

Size	Import Aluminum	USA Aluminum	Import 316 Stainless	Import Brass	Poly-Propylene
1"	GS100-_-AL	100-_-AL	GS100-_-SS	G100-_-BR	PP_100
1-1/4"	GS125-_-AL	125-_-AL	GS125-_-SS	G125-_-BR	PP_125
1-1/2"	GS150-_-AL	150-_-AL	GS150-_-SS	G150-_-BR	PP_150
2"	GS200-_-AL	200-_-AL	GS200-_-SS	G200-_-BR	PP_200
2-1/2"	GS250-_-AL	250-_-AL	GS250-_-SS	G250-_-BR	N/A
3"	GS300-_-AL	300-_-AL	GS300-_-SS	G300-_-BR	PP_300
4"	GS400-_-AL	400-_-AL	GS400-_-SS	G400-_-BR	PP_400
6"	GS600-_-AL	600-_-AL	GS600-_-SS	G600-_-BR	N/A
8"	GS800-_-AL	800-_-AL	GS800-_-SS	G800-_-BR	N/A

\*Polypropylene 1-1/4" Fittings are 1-1/2" Interchange with 1-1/4" Thread

USA 316 Stainless Steel, Malleable Iron, Hard-Coat Aluminum, Nylon Select High Performance Alloys Available by Request - Select Sizes

## REDUCERS

Also Available in 316 Stainless Steel (Select Sizes)

Female Size	Male Size	Item Number
1-1/2"	2"	1520-DA-AL
2"	1-1/2"	2015-DA-AL
2"	3"	2030-DA-AL
2"	4"	2040-DA-AL
2-1/2"	2"	2520-DA-AL
3"	2"	3020-DA-AL
3"	2-1/2"	3025-DA-AL
3"	4"	3040-DA-AL
3"	6"	3060-DA-AL
4"	2"	4020-DA-AL
4"	3"	4030-DA-AL
4"	6"	4060-DA-AL
6"	3"	6030-DA-AL
6"	4"	6040-DA-AL



Female Cam X Male

## CAM ADAPTERS



Male X Male

Size	Item Number
2"x 2"	200-AA-AL
2"x 3"	2030-AA-AL
3"x 3"	300-AA-AL
3"x 4"	3040-AA-AL
4"x 4"	400-AA-AL
4"x 6"	4060-AA-AL
6"x 6"	600-AA-AL



Female X Female

Size	Item Number
2"x 2"	200-DD-AL
2"x 3"	2030-DD-AL
3"x 3"	300-DD-AL
3"x 4"	3040-DD-AL
4"x 4"	400-DD-AL
4"x 6"	4060-DD-AL
6"x 6"	600-DD-AL



Female X Male

Size	Item Number
2"x 2"	200-DA-AL
2"x 3"	2030-DA-AL
3"x 3"	300-DA-AL
3"x 4"	3040-DA-AL
4"x 4"	400-DA-AL
4"x 6"	4060-DA-AL
6"x 6"	600-DA-AL

## CAM LOCK GASKETS



Size	Item Number (Nitrile)	Size	Item Number (Nitrile)
3/4"	75-G-BU	2-1/2"	250-G-BU
1"	100-G-BU	3"	300-G-BU
1-1/4"	125-G-BU	4"	400-G-BU
1-1/2"	150-G-BU	6"	600-G-BU
2"	200-G-BU	8"	800-G-BU



## **Stocking Locations**

1300 National Ave Unit B  
Addison, IL 60101

1440 Kings HWY  
Haddon Heights, NJ 08035

**888-206-3044**

**[sales@builditright.us](mailto:sales@builditright.us)**

**[www.builditright.us](http://www.builditright.us)**