



*UNDERGROUND & OVERHEAD CONSTRUCTION • HORIZONTAL DIRECTIONAL DRILLING • LINE MAINTENANCE*

# ***TOOLS & EQUIPMENT***

## **CATALOG**

# **CHAIN, BINDER & SHACKLES**



# THE RIGHT PRODUCTS, THE RIGHT SERVICE

## The Biggest Range of Wire Pulling Accessories and Drilling Fluid Additives

Are you planning a building project and looking for the most amazing prices on tools and accessories? Build It Right, Inc. is your one stop shop that provides the biggest range of products for drilling, cabling, and wire pulling in the U.S. Offering the highest quality products backed by our years of knowledge and expertise in the industry, you can easily build with confidence and convenience with everything you need at your fingertips.

## Offering the Right Accessories at the Right Price for Any Building Project

Build It Right, Inc. was founded on the needs of our customers to find the most useful and appropriate building products and accessories at the most amazing prices. Our focus is on the customer experience, which is why we deliver exceptional customer service through the most knowledgeable advice and high quality products. Whether you need wire pulling tools, Cetco drilling fluids, drilling polymer products and more, our team is here to help you find exactly what you need at the lowest price.

## Are You Looking for Directional Drilling Tools or Horizontal Directional Drilling Parts?

At Build It Right, we stock the most popular brands that deliver quality no matter what you need to build. Have your Cetco and Bentonite drilling fluids shipped right to your door so that you can build with confidence. You can also order your Cetco and Bentonite drilling fluids by the pallet! Install ducts with efficiency with duct installation range of products, or work quickly when installing cables with our easy to use cable roller range that delivers affordability and speed no matter how large your project is.

## Shop for Cable Puller Products and Accessories Today!

Rather than blowing your building project budget, shop for the most affordable high quality products and accessories with Build It Right, Inc. Offering nationwide shipping and the most competitive prices in the industry, our goal is to ensure that your project is a success. The right products. The right service. Shop Online today or call our team at 1-888-206-3044 to find out more.







## GRADE 30, PROOF COIL CHAIN

- Excellent Low Carbon Steel Chain for General Purpose Applications
- Frequently Used for Fabricating Tow Chains, Binding and Logging Chains, Marine and Other General Applications
- Standard Finish: Self Colored, Zinc Plated or Galvanized
- Hallmarking: "C3" and "USA" on 5/16" and Larger
- Proof Tested
- Design Factor: 4 to 1
- Packaged in Drums, Half Drums, Round Pails, and Square Pails, Order unit is "Feet"
- Do Not Use for Overhead Lifting
- DO NOT EXCEED THE WORKING LOAD LIMIT



Size (in)	Self-Colored Part No.	Zinc Plated Part No.	Galvanized Part No.	Material Diameter (in)	Inside Length (in)	Inside Width (in)	Working Load Limit	Feet Per Pkg.	Weight Per Pkg.	Packaging
1/8"	<b>0120202</b>	-	<b>0120232</b>	0.16"	0.89"	0.29"	400 lb	1000 ft	190 lb	Drums
1/8"	-	<b>0143226</b>	-	0.16"	0.89"	0.29"	400 lb	200 ft	38 lb	Square Pails
3/16"	<b>0120302</b>	<b>0120322</b>	<b>0120332</b>	0.21"	0.95"	0.34"	800 lb	1000 ft	350 lb	Drums
3/16"	<b>0120300</b>	-	<b>0120330</b>	0.21"	0.95"	0.34"	800 lb	500 ft	175 lb	Half Drums
3/16"	-	<b>0140323</b>	<b>0140333</b>	0.21"	0.95"	0.34"	800 lb	250 ft	88 lb	Round Pails
3/16"	-	<b>0143326</b>	<b>0143336</b>	0.21"	0.95"	0.34"	800 lb	150 ft	53 lb	Square Pails
3/16"	-	<b>0725027</b>	-	0.21"	0.95"	0.34"	800 lb	100 ft	38 lb	Reels
1/4"	<b>0120402</b>	<b>0120422</b>	<b>0120432</b>	0.26"	1.20"	0.45"	1300 lb	800 ft	460 lb	Drums
1/4"	<b>0120400</b>	-	<b>0120430</b>	0.26"	1.20"	0.45"	1300 lb	400 ft	230 lb	Half Drums
1/4"	-	<b>0140423</b>	<b>0140433</b>	0.26"	1.20"	0.45"	1300 lb	141 ft	79 lb	Round Pails
1/4"	-	<b>0143426</b>	<b>0143436</b>	0.26"	1.20"	0.45"	1300 lb	100 ft	56 lb	Square Pails
1/4"	-	<b>0722127</b>	-	0.26"	1.20"	0.45"	1300 lb	65 ft	41 lb	Reels
5/16"	<b>0120502</b>	<b>0120522</b>	<b>0120532</b>	0.31"	1.27"	0.47"	1900 lb	550 ft	482 lb	Drums
5/16"	<b>0120500</b>	-	<b>0120530</b>	0.31"	1.27"	0.47"	1900 lb	275 ft	241 lb	Half Drums
5/16"	-	<b>0140523</b>	<b>0140533</b>	0.31"	1.27"	0.47"	1900 lb	92 ft	76 lb	Round Pails
5/16"	<b>014516</b>	<b>0143526</b>	<b>0143536</b>	0.31"	1.27"	0.47"	1900 lb	75 ft	62 lb	Square Pails
5/16"	-	<b>0722227</b>	-	0.31"	1.27"	0.47"	1900 lb	60 ft	50 lb	Reels
3/8"	<b>0120206</b>	<b>0120622</b>	<b>0120632</b>	0.37"	1.36"	0.57"	2650 lb	400 ft	500 lb	Drums
3/8"	<b>0120600</b>	-	<b>0120630</b>	0.37"	1.36"	0.57"	2650 lb	200 ft	250 lb	Half Drums
3/8"	-	<b>0140623</b>	<b>0140633</b>	0.37"	1.36"	0.57"	2650 lb	63 ft	79 lb	Round Pails
3/8"	-	<b>0143626</b>	<b>0143636</b>	0.37"	1.36"	0.57"	2650 lb	45 ft	56 lb	Square Pails
3/8"	-	<b>0722327</b>	-	0.37"	1.36"	0.57"	2650 lb	35 ft	44 lb	Reels
7/16"	-	-	<b>0120732</b>	0.47"	1.37"	0.75"	3700 lb	300 ft	660 lb	Drums
1/2"	<b>0120802</b>	<b>0120822</b>	<b>0120832</b>	0.48"	1.70"	0.75"	4500 lb	200 ft	420 lb	Drums
1/2"	-	<b>0140823</b>	-	0.48"	1.70"	0.75"	4500 lb	40 ft	95 lb	Round Pails
5/8"	<b>0121002</b>	-	<b>0121032</b>	0.66"	2.10"	0.87"	6900 lb	150 ft	610 lb	Drums
3/4"	<b>0121202</b>	-	<b>0121232</b>	0.78"	2.70"	1.02"	10600 lb	100 ft	560 lb	Drums

## GRADE 43, HIGH TEST CHAIN

- Designed for Use in Load Binding, Towing, Logging and Other Applications Requiring High Strength
- Standard Material: Carbon Steel
- Standard Finish: Self Colored, or Bright, Zinc Plated or Galvanized
- Hallmarking: "C4" All Sizes and "USA" on 1/4" 5/16" and Larger
- Design Factor: 3 to 1
- Packaged in Drums, Round Pails, and Square Pails, Order unit is "Feet"
- Do Not Use for Overhead Lifting
- DO NOT EXCEED THE WORKING LOAD LIMIT



DRUM



ROUND PAIL



SQUARE PAIL

Size (in)	Self Colored Part No.	Bright Part No.	Zinc Plated Part No.	Galvanized Part No.	Material Diameter (in)	Inside Length (in)	Inside Width (in)	Working Load Limit	Feet Per Pkg.	Weight Per Pkg.	Packaging
1/4"	<b>0180412</b>	-	-	-	0.28"	1.20"	0.45"	2600 lb	800 ft	504 lb	Drums
1/4"	-	<b>1081413</b>	<b>0181423</b>	-	0.23"	1.20"	0.45"	2600 lb	150 ft	98 lb	Round Pails
1/4"	-	-	<b>0180422</b>	-	0.28"	1.20"	0.45"	2600 lb	800 ft	504 lb	Drums
1/4"	-	<b>0184416</b>	-	-	0.28"	1.20"	0.45"	2600 lb	100 ft	66 lb	Square Pails
1/4"	-	-	-	<b>0180432</b>	0.28"	1.20"	0.45"	2600 lb	800 ft	504 lb	Drums
5/16"	<b>0180512</b>	-	-	-	0.33"	1.27"	0.47"	3900 lb	550 ft	523 lb	Drums
5/16"	-	<b>0181513</b>	<b>0181523</b>	-	0.33"	1.27"	0.47"	3900 lb	100 ft	95 lb	Round Pails
5/16"	-	-	<b>0180522</b>	-	0.33"	1.27"	0.47"	3900 lb	550 ft	523 lb	Drums
5/16"	-	<b>0184516</b>	-	<b>0184536</b>	0.33"	1.27"	0.47"	3900 lb	60 ft	57 lb	Square Pails
5/16"	-	-	-	<b>0180532</b>	0.33"	1.27"	0.47"	3900 lb	550 ft	523 lb	Drums
3/8"	<b>0180612</b>	-	-	-	0.38"	1.36"	0.58"	5400 lb	400 ft	520 lb	Drums
3/8"	-	<b>1081613</b>	<b>0181623</b>	-	0.38"	1.36"	0.58"	5400 lb	75 ft	98 lb	Round Pails
3/8"	-	-	-	<b>0180632</b>	0.38"	1.36"	0.58"	5400 lb	400 ft	520 lb	Drums
3/8"	-	<b>0184616</b>	-	<b>0184636</b>	0.38"	1.36"	0.58"	5400 lb	40 ft	52 lb	Square Pails
1/2"	-	<b>0180812</b>	-	-	0.53"	1.70"	0.75"	9200 lb	200 ft	520 lb	Drums
1/2"	-	-	-	<b>0180832</b>	0.53"	1.70"	0.75"	9200 lb	200 ft	520 lb	Drums
5/8"	-	<b>0181012</b>	-	-	0.66"	1.94"	0.93"	13000 lb	150 ft	534 lb	Drums
5/8"	-	-	-	<b>0181032</b>	0.66"	1.94"	0.93"	13000 lb	150 ft	534 lb	Drums
3/4"	-	<b>0181212</b>	-	-	0.78"	2.21"	1.10"	20200 lb	100 ft	581 lb	Drums

## GRADE 43, BINDER CHAINS

- Binder Chains Manufactured Using Grade 43 Chain and Feature Forged Heat Treated Clevis Grab Hooks on Each End
- Standard Finish: Bright (BRT)
- Chains May Be Used in Accordance with the Latest D.O.T Regulations
- Used to Tie Down or "Bind" Loads for Transportation
- Packaged in Drums, Pails or Vinyl Bags, Order Unit is "Each"
- Do Not Use for Overhead Lifting
- DO NOT EXCEED THE WORKING LOAD LIMIT



DRUM



ROUND PAIL



VINYL BAG

Part No.	Size/Trade Size	Qty Per Packaging	Finish	Weight Each (lb)	Working Load Limit	Packaging
<b>T0222725</b>	3/8" x 16 ft	1	Bright	25 lb	5400 lb	Vinyl Bags
<b>T0223698</b>	3/8" x 20 ft	1	Bright	25 lb	5400 lb	Vinyl Bags
<b>T0223820</b>	3/8" x 20 ft	3	Bright	25 lb	5400 lb	Pails
<b>0226615</b>	5/15" x 20 ft	25	Bright	20 lb	3900 lb	Drums
<b>0226625</b>	5/16" x 20 ft	25	Bright	25 lb	3900 lb	Drums
<b>0222525</b>	3/8" x 12 ft	25	Bright	19 lb	5400 lb	Drums
<b>0222625</b>	3/8" x 14 ft	25	Bright	21 lb	5400 lb	Drums
<b>0222725</b>	3/8" x 16 ft	25	Bright	25 lb	5400 lb	Drums
<b>0222925</b>	3/8" x 20 ft	25	Bright	32 lb	5400 lb	Drums
<b>0223025</b>	3/8" x 25 ft	25	Bright	37 lb	5400 lb	Drums

## CLEVIS GRAB HOOKS, GRADE 43



### (IMPORT)

- Grade 43 Forged Steel
- Grab Hooks Are Designed to Grab a Chain Link and Hold it in Place
- Hooks are Sized by the Material Diameter of the Chain that they Engage.  
Make Sure the Hook Size and Chain Diameter are Compatible Before Attaching to Load
- DO NOT EXCEED THE WORKING LOAD LIMIT



Part No.	Trade Size (in)	Hook Style	Finish	For Chain Size (in)	Working Load Limit	Weight Each (lb)	Shelf Pack	Case Pack
T9501424	1/4"	Clevis	Zinc Plated	1/4"	2600 lb	0.43 lb	10	100
T9501524	5/16"	Clevis	Zinc Plated	5/16"	3900 lb	0.73 lb	10	50
T9501624	3/8"	Clevis	Zinc Plated	3/8"	5400 lb	1.11 lb	10	50
T9501824	1/2"	Clevis	Zinc Plated	1/2"	9200 lb	1.85 lb	5	20

## CLEVIS SLIP HOOKS, GRADE 43



### (IMPORT)

- Grade 43 Forged Steel
- Slip Hooks Are Designed to Allow Chain to Slip Through the Hook
- Hooks are Sized by the Material Diameter of the Chain that they Engage.  
Make Sure the Hook Size and Chain Diameter are Compatible Before Attaching to Load
- DO NOT EXCEED THE WORKING LOAD LIMIT



Part No.	Trade Size (in)	Hook Style	Finish	For Chain Size (in)	Working Load Limit	Weight Each (lb)	Shelf Pack	Case Pack
T9401424	1/4"	Clevis	Zinc Plated	1/4"	2600 lb	0.55 lb	5	100
T9700424	1/4"	Clevis w/Latch	Zinc Plated	1/4"	2600 lb	0.65 lb	5	50
T9401524	5/16"	Clevis	Zinc Plated	5/16"	3900 lb	0.79 lb	5	50
T9700524	5/16"	Clevis w/Latch	Zinc Plated	5/16"	3900 lb	0.85 lb	5	50
T9401624	3/8"	Clevis	Zinc Plated	3/8"	5400 lb	1.41 lb	5	50
T9700624	3/8"	Clevis w/Latch	Zinc Plated	3/8"	5400 lb	1.41 lb	5	30
T9401824	1/2"	Clevis	Zinc Plated	1/2"	9200 lb	2.87 lb	5	15
T9700824	1/2"	Clevis w/Latch	Zinc Plated	1/2"	9200 lb	2.88 lb	5	15

## EYE GRAB HOOKS, GRADE 43



### (IMPORT)

- Grade 43 Forged Steel
- Grab Hooks Are Designed to Grab a Chain Link and Hold it in Place
- DO NOT EXCEED THE WORKING LOAD LIMIT



Part No.	Trade Size (in)	Hook Style	Finish	Working Load Limit	Weight Each (lb)	Shelf Pack	Case Pack
T9001424	1/4"	Eye	Zinc Plated	2600 lb	0.34 lb	10	100
T9001524	5/16"	Eye	Zinc Plated	3900 lb	0.55 lb	10	50
T9001624	3/8"	Eye	Zinc Plated	5400 lb	0.90 lb	10	50
T9001824	1/2"	Eye	Zinc Plated	9200 lb	1.80 lb	5	20

## EYE SLIP HOOKS, GRADE 43



### (IMPORT)

- UPC Tagged Forged Steel
- Slip Hooks Are Designed to Allow Chain to Slip Through the Hook
- DO NOT EXCEED THE WORKING LOAD LIMIT



Part No.	Trade Size (in)	Hook Style	Finish	Working Load Limit	Weight Each (lb)	Shelf Pack	Case Pack
T9101424	1/4"	Eye	Zinc Plated	2600 lb	0.40 lb	10	100
T9101524	5/16"	Eye	Zinc Plated	3900 lb	0.70 lb	10	50
T9101624	3/8"	Eye	Zinc Plated	5400 lb	1.00 lb	10	50
T9101824	1/2"	Eye	Zinc Plated	9200 lb	2.60 lb	5	20

## GRADE 70, TRANSPORT CHAIN

- Designed for Use in Load Binding, Towing, Logging and Other Applications Requiring High Strength
- Can Be Used in Accordance with Department of Transportation Regulations
- Standard Material: Heat Treated Carbon Steel
- Standard Finish: Zinc Electroplate with Yellow Chromate Conversion Coating
- Hallmarking: "C7" and "USA"
- Design Factor: 4 to 1
- Packaged in Drums, Half Drums, Round Pails, and Square Pails, Order unit is "Feet"
- Do Not Use for Overhead Lifting
- DO NOT EXCEED THE WORKING LOAD LIMIT



Size (in)	Part No.	Material Diameter (in)	Inside Length (in)	Inside Width (in)	Finish	Working Load Limit	Feet Per Pkg.	Weight Per Pkg.	Packaging
1/4"	<b>0510410</b>	0.31"	0.94"	0.46"	Yellow Chromate	3150 lb	400 ft	376 lb	Half Drums
1/4"	<b>0510412</b>	0.31"	0.94"	0.46"	Yellow Chromate	3150 lb	800 ft	752 lb	Drums
1/4"	<b>0510413</b>	0.31"	0.94"	0.46"	Yellow Chromate	3150 lb	150 ft	139 lb	Round Pails
1/4"	<b>0510426</b>	0.31"	0.94"	0.46"	Yellow Chromate	3150 lb	65 ft	64 lb	Square Pails
5/16"	<b>0510510</b>	0.33"	1.15"	0.48"	Yellow Chromate	4700 lb	275 ft	280 lb	Half Drums
5/16"	<b>0510512</b>	0.33"	1.15"	0.48"	Yellow Chromate	4700 lb	550 ft	561 lb	Drums
5/16"	<b>0510513</b>	0.33"	1.15"	0.48"	Yellow Chromate	4700 lb	100 ft	102 lb	Round Pails
5/16"	<b>0510526</b>	0.33"	1.15"	0.48"	Yellow Chromate	4700 lb	50 ft	51 lb	Square Pails
3/8"	<b>0510610</b>	0.40"	1.36"	0.57"	Yellow Chromate	6600 lb	200 ft	300 lb	Half Drums
3/8"	<b>0510612</b>	0.40"	1.36"	0.57"	Yellow Chromate	6600 lb	400 ft	600 lb	Drums
3/8"	<b>0510613</b>	0.40"	1.36"	0.57"	Yellow Chromate	6600 lb	75 ft	113 lb	Round Pails
3/8"	<b>0510626</b>	0.40"	1.36"	0.57"	Yellow Chromate	6600 lb	45 ft	68 lb	Square Pails
7/16"	<b>0510712</b>	0.47"	1.29"	0.67"	Yellow Chromate	8750 lb	300 ft	636 lb	Drums
1/2"	<b>0510810</b>	0.53"	1.70"	0.75"	Yellow Chromate	11300 lb	100 ft	260 lb	Half Drums
1/2"	<b>0510812</b>	0.53"	1.70"	0.75"	Yellow Chromate	11300 lb	200 ft	520 lb	Drums

## GRADE 70, BINDER CHAINS

- Binder Chains Manufactured Using Grade 70 Chain and Feature Forged Heat Treated Clevis Grab Hooks on Each End
- Standard Finish: Chain Has Yellow Chromated Zinc Electroplate Finish, Hooks Are Bright Finish
- Chains May Be Used in Accordance with the Latest D.O.T Regulations
- Packaged in Drums, Pails or Vinyl Bags, Order Unit is "Each"
- Do Not Use for Overhead Lifting
- DO NOT EXCEED THE WORKING LOAD LIMIT



Part No.	Size/Trade Size	Qty per Packaging	Finish	Weight Each (lb)	Working Load Limit	Packaging
<b>T0513598</b>	5/16" x 20 ft	1	Yellow Chromate	22 lb	4700 lb	Vinyl Bags
<b>T0513668</b>	5/16" x 20 ft	3	Yellow Chromate	66 lb	4700 lb	Pails
<b>0513572</b>	5/16" x 16 ft	25	Yellow Chromate	17 lb	4700 lb	Drums
<b>0513574</b>	5/16" x 20 ft (Short Link)	25	Yellow Chromate	24 lb	4700 lb	Drums
<b>0513576</b>	5/16" x 20 (Long Link)	25	Yellow Chromate	22 lb	4700 lb	Drums
<b>0513575</b>	5/16" x 25 ft	25	Yellow Chromate	30 lb	4700 lb	Drums
<b>T0513698</b>	3/8" x 20 ft	1	Yellow Chromate	32 lb	6600 lb	Vinyl Bags
<b>T0513678</b>	3/8" x 20 ft	3	Yellow Chromate	96 lb	6600 lb	Pails
<b>0513660</b>	3/8" x 16 ft	25	Yellow Chromate	27 lb	6600 lb	Drums
<b>0513665</b>	3/8" x 20 ft	25	Yellow Chromate	32 lb	6600 lb	Drums
<b>0513667</b>	3/8" x 25 ft	20	Yellow Chromate	39 lb	6600 lb	Drums
<b>0513765</b>	1/2" x 20 ft	20	Yellow Chromate	54 lb	11300 lb	Drums

## CLEVIS GRAB HOOKS, GRADE 70

(IMPORT)

- Forged Steel
- Transport Grade
- Grab Hooks Are Designed to Grab a Chain Link and Hold it in Place
- Hooks are Sized by the Material Diameter of the Chain that they Engage.

Make Sure the Hook Size and Chain Diameter are Compatible Before Attaching to Load



Part No.	Trade Size (in)	Hook Style	Finish	For Chain Size (in)	Working Load Limit	Weight Each (lb)	Shelf Pack	Case Pack
T9503315	1/4"	Clevis	Yellow Chromate	1/4"	3150 lb	0.43 lb	10	100
T9503415	5/16"	Clevis	Yellow Chromate	5/16"	4700 lb	0.71 lb	10	50
T9503515	3/8"	Clevis	Yellow Chromate	3/8"	6600 lb	1.18 lb	10	25

## CLEVIS SLIP HOOKS, GRADE 70

(IMPORT)

- Forged Steel
- Transport Grade
- Slip Hooks Are Designed to Allow Chain to Slip Through the Hook
- Hooks are Sized by the Material Diameter of the Chain that they Engage

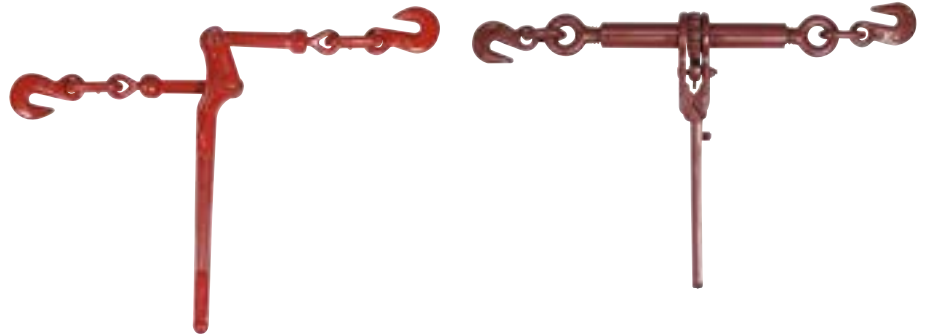
Make Sure the Hook Size and Chain Diameter are Compatible Before Attaching to Load



Part No.	Trade Size (in)	Hook Style	Finish	For Chain Size (in)	Working Load Limit	Weight Each (lb)	Shelf Pack	Case Pack
T9504315	1/4"	Clevis w/Latch	Yellow Chromate	1/4"	3150 lb	0.65 lb	5	50
T9504425	5/16"	Clevis w/Latch	Yellow Chromate	5/16"	4700 lb	0.85 lb	5	50
T9404515	3/8"	Clevis w/Latch	Yellow Chromate	3/8"	6600 lb	1.41 lb	5	30

## LOAD BINDERS

- To Tighten Chain, Typically for Cargo Securement
- Meets U.S. D.O.T. 393.100 - 393.102 Requirements for Use with Chain
- Lever Type: Allows for Quicker Applications of Load
- Ratchet Type: Allows for Easier Adjustment of Tension and Greater Range of Take-Up
- Do Not Use for Overhead Lifting
- DO NOT EXCEED THE WORKING LOAD LIMIT



Part No.	Style	For Chain Size & Grade	Finish	Take-Up	Quantity Per Package	Working Load Limit	Weight Each (lb)
6203205	Lever Type, Imported	1/4" Gr.30 & Gr.43	Painted Red	2-3/4"	4	2600 lb	3.40 lb
6203603	Lever Type, Domestic	5/16" Gr.70 to 3/8" Gr.43	Painted Red	4-1/2"	4	5400 lb	7.50 lb
6203604	Lever Type, Imported	5/16" Gr.70 to 3/8" Gr.43	Painted Red	4-1/2"	4	5400 lb	8.05 lb
6203605	Lever Type, Domestic	3/8" Gr.70 to 1/2" Gr.43	Painted Red	4-1/2"	Bulk	9200 lb	9.92 lb
6207504	Ratchet Type, Imported	5/16" Gr.70 to 3/8" Gr.43	Painted Red	8"	Bulk	5400 lb	11.00 lb
6207506	Ratchet Type, Imported	5/16" Gr.70 to 3/8" Gr.43	Yellow Chromate	8"	2	6600 lb	11.00 lb
6207803	Ratchet Type, Imported	3/8" Gr.70 to 1/2" Gr.43	Painted Red	8"	Bulk	9200 lb	9.92 lb
6207805	Ratchet Type, Domestic	3/8" Gr.70 to 1/2" Gr.43	Painted Red	8"	Bulk	9200 lb	12.50 lb



## GRADE 80, CAM-ALLOY CHAIN

### DRUMS

- Specifically Recommended for Overhead Lifting Applications
- Standard Material: Alloy Steel, Heat Treated
- Standard Finish: Bright
- Hallmarking: “C8”, “USA” and Traceability Code
- Proof Tested
- Design Factor: 4 to 1
- Packaged in Drums, Order unit is “Feet”
- Do Not Use for Overhead Lifting
- DO NOT EXCEED THE WORKING LOAD LIMIT



Size (in)	Part No.	Material Diameter (in)	Inside Length (in)	Inside Width (in)	Working Load Limit	Feet Per Pkg.	Links Per Foot	Weight Per Pkg.	Packaging
5/16"	0400512	0.32"	0.94"	0.46"	4500 lb	500 ft	12.8	460 lb	Drums
1"	0401612	1.00"	2.80"	1.40"	47700 lb	100 ft	4.3	965 lb	Drums
1-1/4"	0402012	1.25"	3.50"	1.75"	72300 lb	60 ft	3.5	915 lb	Drums

## GRADE 100, CAM-ALLOY CHAIN

### DRUMS

- Specifically Recommended for Overhead Lifting Applications
- 25% Stronger Than Grade 80 Which Enables You to Perform Same Lifts with Lighter Weight Chain
- Standard Material: Alloy Steel, Heat Treated
- Standard Finish: Bright
- Hallmarking: “C10”, “USA” and Traceability Code
- Proof Tested
- Design Factor: 4 to 1
- Packaged in Drums, Order Unit is “Feet”
- Made in the USA
- DO NOT EXCEED THE WORKING LOAD LIMIT



Size (in)	Part No.	Material Diameter (in)	Inside Length (in)	Inside Width (in)	Working Load Limit	Feet Per Pkg.	Links Per Foot	Weight Per Pkg.	Packaging
9/32"	0405212	0.29"	0.87"	0.41"	4300 lb	500 ft	13.8	370 lb	Drums
5/16"	0405312	0.33"	1.01"	0.50"	5700 lb	500 ft	12	520 lb	Drums
3/8"	0405412	0.40"	1.22"	0.57"	8800 lb	500 ft	10	740 lb	Drums
1/2"	0405512	0.52"	1.58"	0.75"	1500 lb	300 ft	7.8	750 lb	Drums
5/8"	0405612	0.64"	1.93"	0.87"	22600 lb	200 ft	6.5	758 lb	Drums
3/4"	0405712	0.80"	2.42"	1.09"	35300 lb	100 ft	5.5	598 lb	Drums
7/8"	0405812	0.88"	2.70"	1.28"	42700 lb	100 ft	4.4	775 lb	Drums

## CONSTRUCTION CHAIN

- Manufactured using Grade 30 Proof Coil Chain
- Self-Colored Finish
- General Purpose Chain Primarily Used in Telecommunications industry for Tying, Binding and Pulling: Outside the Plant
- Order unit is “Each”
- Do Not Use for Overhead Lifting
- DO NOT EXCEED THE WORKING LOAD LIMIT



Part No.	Size/Trade Size	Weight Each	Working Load Limit
0213505	5/16" x 4-1/3 ft	6 lb	1700 lb

## WINCH LINE CHAINS

- Made From Alloy Chain and Used with Wire Rope When Wrapping is Required to Lift, Pull or Skid
- Special Hook is Designed to Minimize Fraying of Wire Rope to Which It is Attached
- Proof Tested
- Bulk Packaged, Order Unit is “Each”
- DO NOT EXCEED THE WORKING LOAD LIMIT



Size (in)	Part No.	Chain Length (in)	Weight Each (lb)	Working Load Limit
3/4"	2011295	18"	12 lb	23000 lb
7/8"	2011495	24"	24 lb	34200 lb
1"	2011695	24"	27 lb	38700 lb

## LOG CHAIN

- Made From Grade 30 Proof Coil Chain with Grab Hook One End, Slip Hood Other End
- Standard Finish: Self Colored
- Proof Tested
- Design Factor: 4 to 1
- Packed One 14ft. Length Per Bag, 2 Bags Per Box
- Do Not Use for Overhead Lifting
- DO NOT EXCEED THE WORKING LOAD LIMIT



Size (in)	Part No.	Length	Weight Each	Shelf Pack
3/8"	1005505	14 ft	23 lb	2



## TOW CHAIN

- Tow Chains Are Available in High Test or Transport Grade
- All Have Forged Clevis Hooks
- Tow Chains Are Subject to Shock Loading and Must Be Inspected Frequently
- They Must Be Taken Out of Service When Damaged
- Select the Right Chain for the Job According to the Working Load Limits
- Do Not Use for Overhead Lifting
- DO NOT EXCEED THE WORKING LOAD LIMIT



Part No.	Size/Trade Size	Chain Type	Finish	Packaging	Weight Each (lb)	Working Load Limit	Shelf Pack
0231912	5/16" x 12 ft	High Test Chain w/Clevis Hooks	Hi-Visibility Orange Polycoat	1/Bag	14 lb	3900 lb	23
0231916	5/16" x 16 ft	High Test Chain w/Clevis Hooks	Hi-Visibility Orange Polycoat	1/Bag	18 lb	3900 lb	2
0513578	5/16" x 20 ft	Transport Chain w/Clevis Hooks	Yellow Chromate	1/Bag	22 lb	4700 lb	2



## TOW CABLE

- Used for Towing, Logging
- Galvanized Cable with Zinc Plated Hooks
- Eye Slip Hooks Swagged on Each End
- Product Packaged in Clear, See-Through Plastic Clam Shells
- Do Not Use for Overhead Lifting
- DO NOT EXCEED THE WORKING LOAD LIMIT



Part No.	Size/Description	Working Load Limit	Weight Each (lb)	Shelf Pack
5966920	5/16" x 20 ft	1960 lb	5 lb	3



## CABLE PULLERS

- Features Double Drive Ratchet Wheels
- Easy Let-Down Releases and Aircraft-Type, 3/16" Galvanized Cables
- Build-in Safety Handle is Designed to Bend if Recommended Working Load Limit is Exceeded
- Packaged 1 Per Box, with Operating Instructions
- CAUTION: Do Not Use Cable Pullers to Lift People or Lift Loads Over People



Part No.	Draw	Lift Capacity	Pull Capacity	Packaged	Weight Each (lb)	Shelf Pack
6312035	10-1/2 ft	1/2T	1T	Boxed	8.80 lb	1
6312036	6 ft	1T	2T	Boxed	9.50 lb	1



## QUICK-ALLOY COUPLING LINKS

- For connecting chain to Components in the Fabrication of Chain Slings
- For Use with Grade 80/100 Chain Slings
- 4 to 1 Design Factor
- Meet or Exceed All Requirements of ASME B30.9
- 100% Proof Tested in Accordance with ASTM A952
- 3/4" Through 1-1/4" Coupling Links Utilize a Barrel Style Oversized Retainer
- Made in the USA
- Per ASME B30.9, Section 9.1.3 "Mechanical Coupling Links Shall Not Be Used Within the Body of an Alloy Chain Sling to Connect Two Pieces of Chain"
- DO NO EXCEED THE WORKING LOAD LIMIT



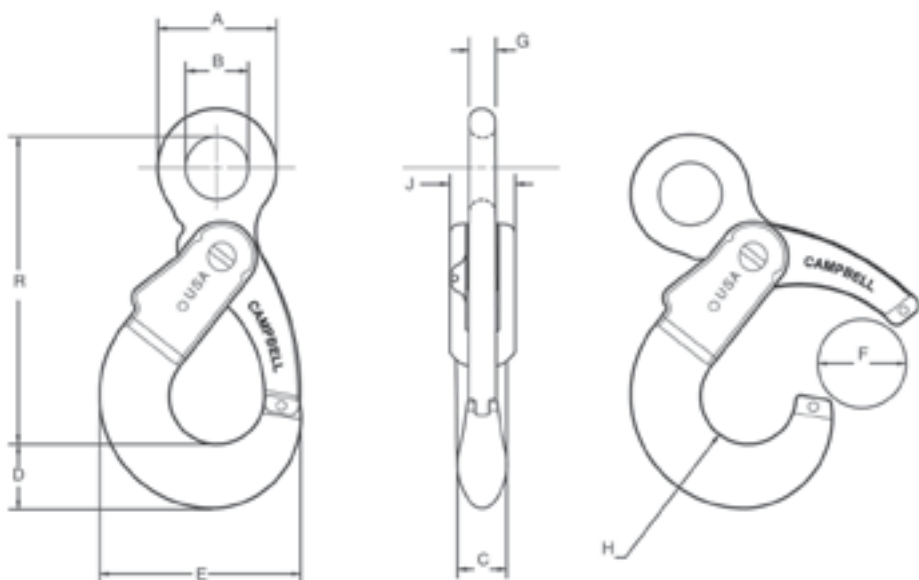
Chain Size (in)	Part No.	Grade	Material Diameter	Working Load Limit	Weight Each (lb)
7/32"	<b>5770315</b>	80	1/2"	2,100 lb	0.10 lb
9/32"	<b>5779125</b>	100	37/64"	4,300 lb	0.26 lb
3/8"	<b>5779135</b>	100	13/16"	8,800 lb	0.69 lb
1/2"	<b>5779145</b>	100	1-3/16"	15,000 lb	1.56 lb
5/8"	<b>5779155</b>	100	1-5/16"	22,600 lb	2.51 lb
3/4"	<b>5779165</b>	100	1-11/16"	35,300 lb	4.05 lb
7/8"	<b>5779175</b>	100	1-7/8"	42,700 lb	8.00 lb
1"	<b>5771615</b>	80	2-1/8"	47,700 lb	9.50 lb
1-1/4"	<b>5772015</b>	80	2-11/32"	72,300 lb	16.62 lb

Chain Size (in)	Part No.	A Dim.	B Dim.	C Dim.	D Dim.	E Dim.	F Dim.	G Dim.
7/32"	<b>5770315</b>	17/64"	7/32"	15/16"	7/16"	5/32"	1-17/32"	3/8"
9/32"	<b>5779125</b>	3/8"	11/32"	23/32"	9/16"	13/64"	2-13/64"	3/8"
3/8"	<b>5779135</b>	1/2"	7/16"	2-3/8"	13/16"	5/16"	2-7/16"	23/64"
1/2"	<b>5779145</b>	11/16"	9/16"	3"	1-1/32"	25/64"	3-3/8"	29/64"
5/8"	<b>5779155</b>	13/16"	23/32"	3-7/8"	1-9/32"	15/32"	3-29/32"	35/64"
3/4"	<b>5779165</b>	15/16"	61/64"	4-5/8"	1-9/16"	9/16"	4-3/4"	-
7/8"	<b>5779175</b>	1-3/16"	1-1/16"	5-3/8"	1-13/16"	41/64"	5-5/16"	-
1"	<b>5771615</b>	1-15/64"	1-9/64"	5-7/8"	2-1/32"	11/16"	5-7/8"	-
1-1/4"	<b>5772015</b>	1-1/2"	1-3/8"	7-3/8"	2-9/32"	15/16"	6-15/16"	-



## CAM ALLOY® SELF-LOCKING EYE HOOKS

- Meet or Exceed All Requirements of ASME B30.9 and B30.10
- Fatigue and 100% Proof Tested in Accordance with ASTM A952
- Additionally Hallmarked with "USA" and Date Code
- Meets the intent of OSHA Regulations 1926.550 (g) (4) (iv) (b)
- Latch Closes Automatically Under Load
- Eye Style is Designed to Accommodate Heavy Duty Wire Rope Thimbles
- Stamped with Recommended Wire Rope Size
- Working Load Limit Rating of 5 to 1 to Meet Design Requirements of Wire Rope Slings
- Made in the USA
- DO NOT EXCEED THE WORKING LOAD LIMIT



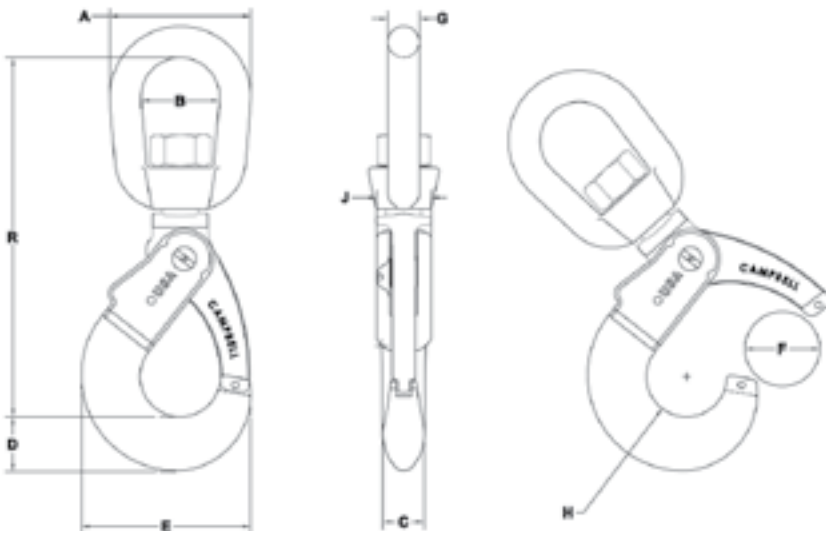
Chain Size (in)	Part No.	Working Load Limit		Weight Each (lb)	Shelf Pack
		4 to 1	For Wire Rope Size (in)		
9/32"	5648495	4300 lb	7/16"	2.25 lb	-
3/8"	5648695	8800 lb	1/2"	4.00 lb	-
1/2"	5648895	15000 lb	5/8"	8.65 lb	1
5/8"	5649095	22600 lb	7/8"	13.80 lb	1

Trade Size (in)	Part No.	A Dim.	B Dim.	C Dim.	D Dim.	E Dim.	F Dim.	G Dim.	H Dim.	J Dim.	R Dim.
9/32"	5648495	1.875"	1.00"	0.938"	1.02"	3.594"	1.625"	0.438"	0.875"	1.25"	5.468"
3/8"	5648695	2.375"	1.375"	1.125"	1.250"	4.312"	1.875"	0.578"	1.063"	1.50"	6.50"
1/2"	5648895	3.188"	1.688"	1.688"	1.796"	5.404"	2.250"	0.688"	1.281"	1.75"	8.75"
5/8"	5649095	3.50"	2.00"	2.00"	2.169"	6.50"	2.375"	0.75"	1.50"	2.00"	10.00"



## CAM ALLOY® SELF-LOCKING SWIVEL HOOKS

- Meet or Exceed All Requirements of ASME B30.9 and B30.10
- Fatigue and 100% Proof Tested in Accordance with ASTM A952
- Additionally Hallmarked with "USA" and Date Code
- Meets the intent of OSHA Regulations 1926.550 (g) (4) (iv) (b)
- Latch Closes Automatically Under Load
- Working Load Limit Rating of 5 to 1 to Meet Design Requirements of Wire Rope Slings
- Made in the USA
- DO NOT EXCEED THE WORKING LOAD LIMIT



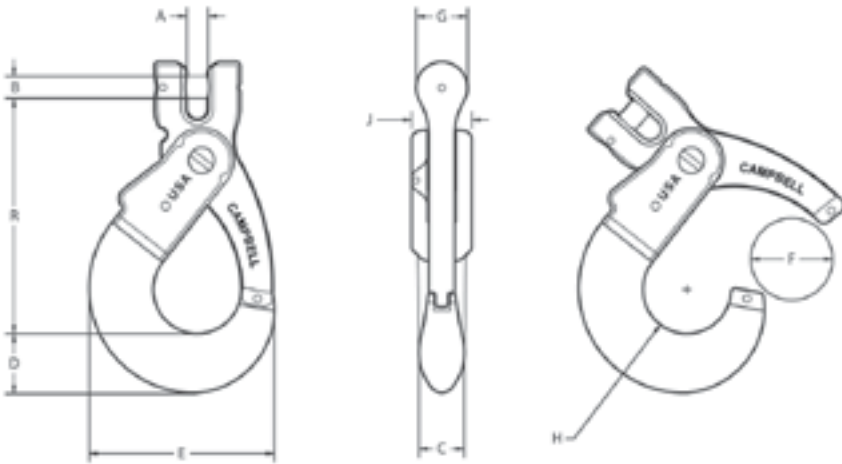
Chain Size (in)	Part No.	UPC No. 020418	Working Load Limit		Weight Each (lb)
			4 to 1	For Wire Rope Size	
9/32"	<b>5798495</b>	<b>226830</b>	4300 lb	7/16"	3.35 lb
3/8"	<b>5798695</b>	<b>226847</b>	8800 lb	1/2"	5.80 lb
1/2"	<b>5798895</b>	<b>226878</b>	15000 lb	5/8"	12.95 lb
5/8"	<b>5799095</b>	<b>226861</b>	22600 lb	7/8"	21.00 lb

Trade Size (in)	Part No.	A Dim.	B Dim.	C Dim.	D Dim.	E Dim.	F Dim.	G Dim.	H Dim.	J Dim.	R Dim.
9/32"	<b>5798495</b>	3.00"	1.75"	0.938"	1.02"	3.594"	1.625"	0.625"	0.875"	1.25"	7.688"
3/8"	<b>5798695</b>	3.50"	2.00"	1.125"	1.25"	4.312"	1.875"	0.75"	1.063"	1.50"	8.813"
1/2"	<b>5798895</b>	4.50"	2.50"	1.312"	1.796"	5.404"	2.25"	1.00"	1.281"	1.75"	11.25"
5/8"	<b>5799095</b>	5.625"	3.50"	1.50"	2.169"	6.50"	2.375"	1.25"	1.50"	2.00"	13.438"



## QUICK ALLOY® SELF-LOCKING SWIVEL HOOKS

- Meets the intent of OSHA Regulations 1926.550 (g) (4) (iv) (b)
- Meet or Exceed All Requirements of ASME B30.9 and B30.10
- Fatigue and 100% Proof Tested in Accordance with ASTM A952
- Additionally Hallmarked with "USA" and Date Code
- Latch Closes Automatically Under Load
- Trigger Assembly is Completely Replaceable
- Made in the USA
- DO NOT EXCEED THE WORKING LOAD LIMIT



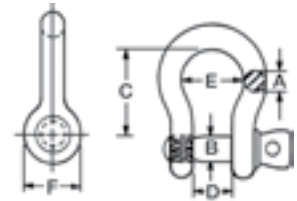
Chain Size (in)	Part No.	UPC No. 020418	Working Load Limit 4 to 1	Grade	Weight Each (lb)	Shelf Pack
9/32"	5748495	193309	4300 lb	100	2.35 lb	-
3/8"	5748695	193316	8800 lb	100	4.10 lb	-
1/2"	5748895	193323	15000 lb	100	8.75 lb	1
5/8"	5749095	193330	22600 lb	100	13.30 lb	1

Trade Size (in)	Part No.	A Dim.	B Dim.	C Dim.	D Dim.	E Dim.	F Dim.	G Dim.	H Dim.	J Dim.	R Dim.
9/32"	5748495	0.312"	0.375"	0.938"	1.02"	3.594"	1.625"	1.00"	0.875"	1.25"	4.688"
3/8"	5748695	0.438"	0.500"	1.125"	1.25"	4.312"	1.875"	1.125"	1.063"	1.50"	5.563"
1/2"	5748895	0.563"	0.625"	1.312"	1.796"	5.404"	2.25"	1.50"	1.281"	1.75"	6.884"
5/8"	5749095	0.719"	0.750"	1.500"	2.169"	6.50"	2.375"	1.625"	1.50"	2.00"	8.25"

## ALLOY SCREW PIN ANCHOR SHACKLES

### GALVANIZED, A-419-G

- Shackle Bodies Are Drop-Forged Alloy Steel
- Galvanized to Meet ASTM A-153 Specifications
- A-419-G Shackles Meet the Design Requirements of Federal Specifications RR-C-271, Type IVA Grade A, Class 2
- Working Load Limit, Size, Manufacture Name, Date Code, "CE" Mark and USA Permanently Marked on Each Shackle
- Statistically Tested for Impact Resistance, Tensile Strength, Hardness, Ductility and Fatigue
- 419 Shackles Meet or Exceed All Manufacturing Requirements of the ASME B30.26 "Rigging Hardware". These include the Material Ductility Requirement (Section 26-1.1.2), the Design Factor Requirement (Section 26.1.2), the Identification Requirement (Section 26-1.5.1), and the Effective Temperature Range (Section 226-1.6.1). The Shackles can be proof tested in Accordance with Section 26-1.4.

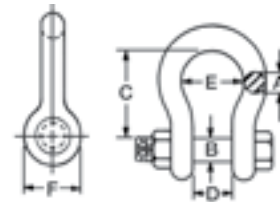


Size (in)	Part No.	Working Load Limit (Short Tons)	B Dim.	C Dim.	D Dim.	E Dim.	F Dim.	(C) Tolerance (+/-)	(D) Tolerance (+/-)	Weight (lb)
3/8"	5410695	2T	7/16"	1-7/16"	21/32"	15/16"	15/16"	1/8"	1/8"	0.31 lb
1/2"	5410895	3-1/3T	5/8"	1-15/16"	13/16"	1-1/4"	1-1/4"	1/8"	1/8"	0.71 lb
5/8"	5411095	5T	3/4"	2-3/8"	1-1/16"	1-1/2"	1-1/2"	1/8"	1/8"	1.40 lb
3/4"	5411295	7T	7/8"	2-13/16"	1-1/4"	1-3/4"	1-3/4"	1/4"	1/8"	2.00 lb
7/8"	5411495	9-1/2T	1"	3-5/16"	1-7/16"	2-2/32"	2-3/32"	1/4"	1/8"	3.60 lb
1"	5411695	12-12T	1-1/8"	3-3/4"	1-11/16"	2-3/8"	2-3/8"	1/4"	1/8"	5.70 lb
1-1/4"	5412095	18T	1-3/8"	4-1/2"	2"	3"	3"	1/4"	1/8"	10.50 lb
1-3/8"	5412295	21T	1-1/2"	5-1/4"	2-1/4"	3-5/16"	3-5/16"	1/4"	3/16"	13.30 lb
1-1/2"	5412495	30T	1-5/8"	5-3/4"	2-3/8"	3-5/8"	3-5/8"	1/4"	3/16"	18.90
2"	5413295	55T	2-1/4"	7-3/4"	3-1/4"	4-7/8"	4-7/8"	1/2"	3/16"	50.00 lb

## ALLOY BOLT TYPE ANCHOR SHACKLES

### GALVANIZED, A-999-G

- Shackle Bodies Are Drop-Forged Alloy Steel
- Galvanized to Meet ASTM A-153 Specifications
- A-999-G Shackles Meet the Design Requirements of Federal Specifications RR-C-271, Type IVA Grade A, Class 2
- Working Load Limit, Size, Manufacture Name, Date Code, "CE" Mark and USA Permanently Marked on Each Shackle
- Statistically Tested for Impact Resistance, Tensile Strength, Hardness, Ductility and Fatigue
- 999 Shackles Meet or Exceed All Manufacturing Requirements of the ASME B30.26 "Rigging Hardware". These include the Material Ductility Requirement (Section 26-1.1.2), the Design Factor Requirement (Section 26.1.2), the Identification Requirement (Section 26-1.5.1), and the Effective Temperature Range (Section 226-1.6.1). The Shackles can be proof tested in Accordance with Section 26-1.4.



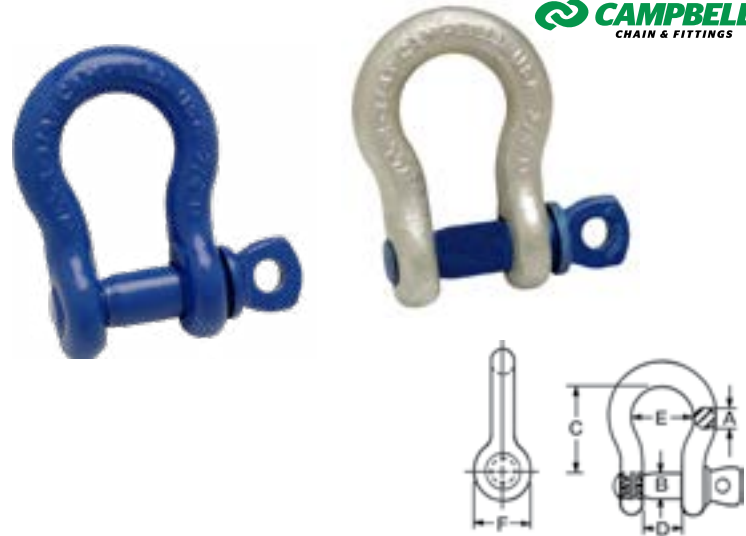
Size (in)	Part No.	Working Load Limit (Short Tons)	B Dim.	C Dim.	D Dim.	E Dim.	F Dim.	(C) Tolerance (+/-)	(D) Tolerance (+/-)	Weight (lb)
3/8"	5390695	2T	7/16"	1-7/16"	21/32"	31/32"	15/16"	1/8"	1/8"	0.30 lb
1/2"	5390895	3-1/3T	5/8"	1-15/16"	13/16"	1-1/4"	1-1/4"	1/8"	1/8"	0.88 lb
5/8"	5391095	5T	3/4"	2-3/8"	1-1/16"	1-11/16"	1-1/2"	1/8"	1/8"	1.40 lb
3/4"	5391295	7T	7/8"	2-13/16"	1-1/4"	1-13/16"	1-3/4"	1/4"	1/8"	2.66 lb
7/8"	5391495	9-1/2T	1"	3-5/16"	1-7/16"	2-9/32"	2-3/32"	1/4"	1/8"	3.60 lb
1"	5392095	12-1/2T	1-1/8"	3-3/4"	1-11/16"	2-1/2"	2-3/8"	1/4"	1/8"	6.12 lb
1-1/4"	5392295	18T	1-3/8"	4-1/2"	2"	3-1/4"	3"	1/4"	1/8"	10.00 lb
1-3/8"	5392295	21T	1-1/2"	5-1/4"	2-1/4"	3-5/8"	3-5/16"	1/4"	3/16"	13.30 lb
1-1/2"	5392495	30T	1-5/8"	5-3/4"	2-3/8"	3-7/8"	3-5/8"	1/4"	3/16"	18.90 lb
1-3/4"	5392895	40T	2"	7"	2-7/8"	4-7/8"	4-3/16"	1/4"	3/16"	33.90 lb
2"	5393295	55T	2-1/4"	7-3/4"	3-1/4"	5-3/4"	4-7/8"	1/2"	3/16"	50.00 lb
2-1/2"	5394095	85T	2-3/4"	10-1/2"	4-1/8"	7-1/4"	5-13/16"	1/2"	1/4"	100.30 lb



## PIN ANCHOR SHACKLES

### SELF-COLORED, C-419-S, GALVANIZED, C-419-G

- Shackle Bodies Are Drop-Forged Carbon Steel
- C-419-S Shackles Meet the Design Requirements of Federal Specifications RR-C-271, Type IVA Grade A, Class 2
- Working Load Limit, Size, Manufacture Name, Date Code and USA Permanently Marked on Each Shackle
- Statistically Tested for Impact Resistance, Tensile Strength, Hardness, Ductility and Fatigue
- 419 Shackles Meet or Exceed All Manufacturing Requirements of the ASME B30.26 "Rigging Hardware". These include the Material Ductility Requirement (Section 26-1.1.2), the Design Factor Requirement (Section 26-1.2), the Identification Requirement (Section 26-1.5.1), and the Effective Temperature Range (Section 226-1.6.1). The Shackles can be proof tested in Accordance with Section 26-1.4.



#### C-419-S Self Colored - DO NOT EXCEED WORKING LOAD LIMIT

Size (in)	Part No.	Working Load Limit (Short Tons)	B Dim.	C Dim.	D Dim.	E Dim.	F Dim.	(C) Tolerance (+/-)	(D) Tolerance (+/-)	Weight (lb)
1/4"	5410405	1/2T	5/16"	1-1/8"	15/32"	25/32"	11/16"	1/16"	1/8"	0.10 lb
5/16"	5410505	3/4T	3/8"	1-1/4"	17/32"	27/32"	3/4"	1/16"	1/8"	0.20 lb
3/8"	5410605	1T	7/16"	1-7/16"	21/32"	31/32"	15/16"	1/8"	1/8"	0.30 lb
7/16"	5410705	1-1/2T	1/2"	1-3/4"	23/32"	1-5/32"	1-1/8"	1/8"	1/8"	0.52 lb
1/2"	5410805	2T	5/8"	1-15/16"	13/16"	1-1/4"	1-1/4"	1/8"	1/8"	0.80 lb
5/8"	5411005	3-1/4T	3/4"	2-7/16"	1-1/16"	1-9/16"	1-7/16"	1/8"	1/8"	1.50 lb
3/4"	5411205	4-3/4T	7/8"	2-13/16"	1-1/4"	1-13/16"	1-3/4"	1/4"	1/8"	2.00 lb
7/8"	5411405	6-1/2T	1"	3-1/8"	1-7/16"	2-1/16"	2"	1/4"	1/8"	3.20 lb
1"	5411605	8-1/2T	1-1/8"	3-3/4"	1-11/16"	2-1/2"	2-3/8"	1/4"	1/8"	5.00 lb
1-1/8"	5411805	9-1/2T	1-1/4"	4-1/4"	1-13/16"	2-15/16"	2-5/8"	1/4"	1/8"	7.00 lb
1-1/4"	5412005	12T	1-3/8"	4-1/2"	2"	3-1/4"	3"	1/4"	1/8"	10.00 lb
1-3/8"	5412205	13-1/2T	1-1/2"	5-1/4"	2-1/4"	3-1/2"	3-1/4"	1/4"	3/16"	13.00 lb
1-1/2"	5412405	17T	1-5/8"	5-3/4"	2-3/8"	3-7/8"	3-1/2"	1/4"	3/16"	16.00 lb
1-3/4"	5412805	25T	2"	7"	2-7/8"	4-3/4"	4"	1/4"	3/16"	26.00 lb
2"	5413205	35T	2-1/4"	7-3/4"	3-1/4"	5-3/4"	4-7/8"	1/2"	3/16"	41.00 lb

#### C-419-G Galvanized - DO NOT EXCEED WORKING LOAD LIMIT

Size (in)	Part No.	Working Load Limit (Short Tons)	B Dim.	C Dim.	D Dim.	E Dim.	F Dim.	(C) Tolerance (+/-)	(D) Tolerance (+/-)	Weight (lb)
3/16"	5410335	1/3T	1/4"	7/8"	3/8"	19/32"	9/16"	1/16"	1/8"	0.05 lb
1/4"	5410435	1/2T	5/16"	1-1/8"	15/32"	25/32"	11/16"	1/16"	1/8"	0.10 lb
5/16"	5410535	3/4T	3/8"	1-1/4"	17/32"	27/32"	3/4"	1/16"	1/8"	0.20 lb
3/8"	5410635	1T	7/16"	1-7/16"	21/32"	31/32"	15/16"	1/8"	1/8"	0.30 lb
7/16"	5410735	1-1/2T	1/2"	1-3/4"	23/32"	1-5/32"	1-1/8"	1/8"	1/8"	0.52 lb
1/2"	5410835	2T	5/8"	1-15/16"	13/16"	1-1/4"	1-1/4"	1/8"	1/8"	0.80 lb
5/8"	5411035	3-1/4T	3/4"	2-7/16"	1-1/16"	1-9/16"	1-7/16"	1/8"	1/8"	1.06 lb
3/4"	5411235	4-3/4T	7/8"	2-13/16"	1-1/4"	1-13/16"	1-3/4"	1/4"	1/8"	2.15 lb
7/8"	5411435	6-1/2T	1"	3-1/8"	1-7/16"	2-1/16"	2"	1/4"	1/8"	3.20 lb
1"	5411635	8-1/2T	1-1/8"	3-3/4"	1-11/16"	2-1/2"	2-3/8"	1/4"	1/8"	5.00 lb
1-1/8"	5411835	9-1/2T	1-1/4"	4-1/4"	1-13/16"	2-15/16"	2-5/8"	1/4"	1/8"	7.00 lb
1-1/4"	5412035	12T	1-3/8"	4-1/2"	2"	3-1/4"	3"	1/4"	1/8"	10.00 lb
1-3/8"	5412235	13-1/2T	1-1/2"	5-1/4"	2-1/4"	3-1/2"	3-1/4"	1/4"	3/16"	13.00 lb
1-1/2"	5412435	17T	1-5/8"	5-3/4"	2-3/8"	3-7/8"	3-1/2"	1/4"	3/16"	16.00 lb
1-3/4"	5412835	25T	2"	7"	2-7/8"	4-3/4"	4"	1/4"	3/16"	26.00 lb
2"	5413235	35T	2-1/4"	7-3/4"	3-1/4"	5-3/4"	4-7/8"	1/2"	3/16"	40.00 lb
2-1/2"	5414035	55T	2-3/4"	10-9/16"	4-1/8"	7-1/4"	5-1/2"	1/2"	1/4"	90.00 lb

## CARBON BOLT TYPE ANCHOR SHACKLES, GALVANIZED, C-999-G

- Shackle Bodies Are Drop-Forged Carbon Steel
- Galvanized to Meet ASTM A-153 Specifications
- C-999-G Shackles Meet the Design Requirements of Federal Specifications RR-C-271, Type IVA Grade A, Class 3
- Working Load Limit, Size, Manufacture Name, Date Code and USA Permanently Marked on Each Shackle
- Statistically Tested for Impact Resistance, Tensile Strength, Hardness, Ductility and Fatigue
- 999 Shackles Meet or Exceed All Manufacturing Requirements of the ASME B30.26 "Rigging Hardware". These include the Material Ductility Requirement (Section 26-1.1.2), the Design Factor Requirement (Section 26.1.2), the Identification Requirement (Section 26-1.5.1), and the Effective Temperature Range (Section 226-1.6.1). The Shackles can be proof tested in Accordance with Section 26-1.4.



Size (in)	Part No.	Working Load Limit (Short Tons)	B Dim.	C Dim.	D Dim.	E Dim.	F Dim.	(C) Tolerance (+/-)	(D) Tolerance (+/-)	Weight (lb)
1/4"	<b>5390435</b>	1/2 T	5/16"	1-1/8"	15/32"	25/32	11/16"	1/16"	1/8"	0.10 lb
3/8"	<b>5390635</b>	1 T	7/16"	1-7/16"	31/32"	15/16"	15/16"	1/8"	1/8"	0.30 lb
1/2"	<b>5390835</b>	2 T	5/8"	1-15/16"	13/16"	1-1/4"	1-1/4"	1/8"	1/8"	0.70 lb
5/8"	<b>5391035</b>	3-1/4 T	3/4"	2-7/16"	1-1/16"	1-9/16"	1-7/16"	1/8"	1/8"	1.30 lb
3/4"	<b>5391235</b>	4-3/4 T	7/8"	2-13/16"	1-1/4"	1-13/16"	1-3/4"	1/4"	1/8"	2.00 lb
7/8"	<b>5391435</b>	6-1/2 T	1"	3-1/8"	1-7/16"	2-1/16"	2"	1/4"	1/8"	3.30 lb
1"	<b>5391635</b>	8-1/2 T	1-1/8"	3-3/4"	1-11/16"	2-1/2"	2-3/8"	1/4"	1/8"	5.00 lb
1-1/8"	<b>5391835</b>	9-1/2 T	1-1/4"	4-1/4"	1-13/16"	2-15/16"	2-5/8"	1/4"	1/8"	7.10 lb
1-1/4"	<b>5392205</b>	12 T	1-3/8"	4-1/2"	2"	3-1/4"	3"	1/4"	1/8"	10.00 lb
1-3/8"	<b>5392235</b>	13-1/2 T	1-1/2"	5-1/4"	2-1/4"	3-1/2"	3-1/4"	1/4"	3/16"	13.00 lb
1-1/2"	<b>5392435</b>	17 T	1-5/8"	5-3/4"	2-3/8"	3-7/8"	3-1/2"	1/4"	3/16"	16.00 lb
1-3/4"	<b>5392835</b>	25 T	2"	7"	2-7/8"	4-3/4"	4"	1/4"	3/16"	28.50 lb
2"	<b>5393235</b>	35 T	2-1/4"	7-3/4"	3-1/4"	5-3/4"	4-7/8"	1/2"	3/16"	40.00 lb
2-1/2"	<b>5394035</b>	55 T	2-3/4"	10-9/16"	4-1/8"	7-1/4"	5-1/2"	1/2"	1/4"	90.00 lb



# CAMPBELL®

## CHAIN & FITTINGS



## LATCH KITS

### FOR NON-INTEGRATED HOOKS

- Clapper Latches are zinc plated
- Spring spacer adapts latch to hook with narrow cam
- Bolt and nut permit fast, easy installation



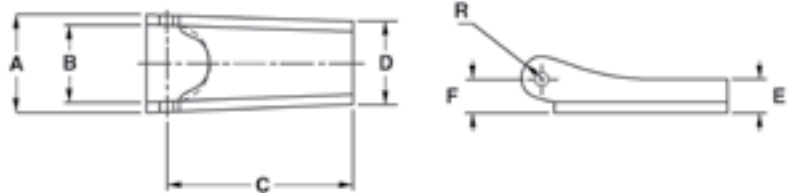
916-G LATCH KIT  
FOR CAMPBELL HOOK

916-U UNIVERSAL  
LATCH KIT  
FOR ALL MAJOR HOOK BRANDS

### READ AND UNDERSTAND THESE WARNINGS AND INSTRUCTIONS BEFORE USING HOOK AND LATCH.

#### IMPORTANT: instructions For Use

1. Always inspect the hook and latch before using.
2. Always make sure the spring forces the latch against the point of the hooks.
3. Check the load before lifting to make sure the hook (not the latch) is supporting the load.
4. To assemble latches on hooks, follow instructions supplied with kit.



NOTE: Latches listed on this page cannot be used on Campbell's current design of integrated Sling and Hoist Hooks. Please refer to the appropriate catalog pages for these hooks for proper replacement latch kits.

Size	916-G Kit		Universal Kit		Dimensions														Weight/100	
	in.	mm	Cat. No.	Cat. No.	A		B		C		D		E		F		R		lb	kg
1/4	6	2-22	3990101	3991401	23/32	18	9/16	14	1 1/4	32	5/8	16	1/4	6	1/4	6	5/32	4	3.3	1
5/16	8	3-23	3990201	3991402	23/32	18	9/16	14	1 3/8	39	39/64	16	1/4	6	1/4	6	5/32	4	3.7	2
--	--	4-24	3990301	3991403	15/16	24	25/32	20	1 17/32	43	15/16	24	9/32	7	9/32	7	3/16	5	5	2
3/8	10	5-25	3990401	3991404	15/16	24	25/32	20	1 11/16	43	15/16	24	9/32	7	9/32	7	3/16	5	5.6	3
--	--	6-26	3990501	--	15/16	24	25/32	20	1 31/32	50	15/16	24	9/32	7	9/32	7	3/16	5	6.2	3
7/16	11	7-27	3990601	3991405	1 9/32	24	25/32	20	1 7/8	48	15/16	24	9/32	7	9/32	7	3/16	5	6.5	3
--	--	8-28	3990701	--	1 9/32	32	1	25	2 3/8	60	1 9/32	32	3/8	10	9/16	14	17/64	7	12	5
1/2	13	9-29	3990801	3991406	1 9/32	32	1	25	2 11/16	68	1 9/32	32	3/8	10	9/16	14	17/64	7	16.5	7
--	--	10-30	3990901	--	1 9/32	32	1	25	2 31/32	75	1 9/32	32	3/8	10	9/16	14	17/64	7	18.2	8
5/8	16	11-31	3991001	3991407	1 9/32	32	1	25	3 7/32	82	1 9/32	32	3/8	10	9/16	14	17/64	7	36	16
--	--	12-32	3991101	3991408	2	51	1 17/32	39	3 7/16	87	1 5/8	41	9/16	14	23/32	18	3/8	10	52	24
--	--	34	--	3991409	2 3/16	56	1 3/4	45	4 11/32	110	1 3/4	45	9/16	14	11/16	18	13/32	10	70.7	32

#### ! WARNING

- Failure to follow the instructions For Use below and these warnings may cause death or serious injury.
- Loads may disengage from hook if proper procedures are not followed.
- A falling load may cause serious injury or death.
- The load must never be supported by the latch.
- Latches must always be inspected for wear or damage before use. If worn, distorted or damaged, discard and replace.
- Always stand clear of loads being lifted.



## **Stocking Locations**

1300 National Ave Unit B  
Addison, IL 60101

1440 Kings HWY  
Haddon Heights, NJ 08035

**888-206-3044**

**[sales@builditright.us](mailto:sales@builditright.us)**

**[www.builditright.us](http://www.builditright.us)**